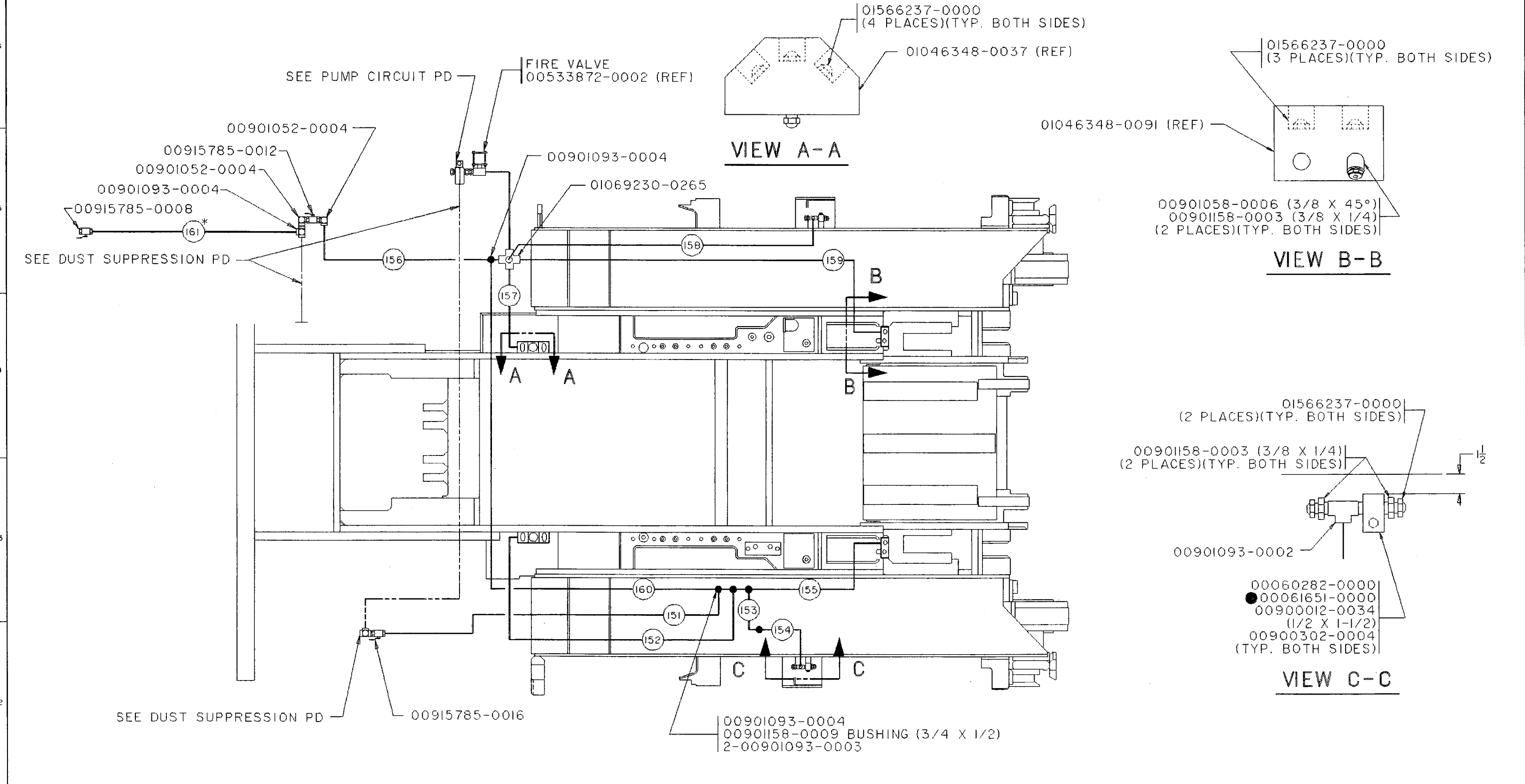


0000-9T0900d



VIEW A-A

VIEW B-B

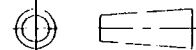
VIEW C-C

* USED ONLY WITH L.H. WASH DOWN HOSE
 ● LOCATE AND WELD - MINIMUM 70,000 PSI TENSILE

ENG ORDER @ FDE1332	REVISIONS @FDE2623 @FDE7876	CAD-CAM DRAWING MANUAL REVISIONS NOT AUTHORIZED. UNLESS OTHERWISE NOTED: ALL DIMENSIONS IN INCHES. MACHINING DIMENSIONS LIMITED TO: FRACTIONAL 1/64, ANGULAR 1/2°. STRUCTURAL DIMENSIONS LIMITED TO 1/16. DO NOT SCALE THIS DRAWING.		MATERIAL _____ HEAT TREAT _____ HARDNESS _____ CARBURIZE (ECD) _____	PATTERN NO _____ LITHOPRINT YES <input checked="" type="checkbox"/> NO <input type="checkbox"/>	FINISH SYMBOLS <table border="1"> <thead> <tr> <th>SY</th> <th>MICRO INCHES</th> <th>DESCRIPTION</th> <th>SY</th> <th>MICRO INCHES</th> <th>DESCRIPTION</th> </tr> </thead> <tbody> <tr> <td>A</td> <td>4</td> <td>PRECISION POLISH</td> <td>F</td> <td>125</td> <td>COMMON MACHINE</td> </tr> <tr> <td>B</td> <td>6</td> <td>FINE POLISH</td> <td>G</td> <td>250</td> <td>ROUGH MACHINE</td> </tr> <tr> <td>C</td> <td>16</td> <td>COMMON POLISH</td> <td>H</td> <td>500</td> <td>HEAVY ROUGH</td> </tr> <tr> <td>D</td> <td>32</td> <td>GRIND OR EQUAL</td> <td>K</td> <td>1000</td> <td>EX HEAVY ROUGH</td> </tr> <tr> <td>E</td> <td>65</td> <td>SMOOTH MACHINE</td> <td></td> <td></td> <td></td> </tr> </tbody> </table>	SY	MICRO INCHES	DESCRIPTION	SY	MICRO INCHES	DESCRIPTION	A	4	PRECISION POLISH	F	125	COMMON MACHINE	B	6	FINE POLISH	G	250	ROUGH MACHINE	C	16	COMMON POLISH	H	500	HEAVY ROUGH	D	32	GRIND OR EQUAL	K	1000	EX HEAVY ROUGH	E	65	SMOOTH MACHINE				JOY TECHNOLOGIES INC. FRANKLIN, PENNSYLVANIA 16323 THIS DRAWING AND ALL INFORMATION THEREIN IS THE PROPERTY OF AND CONFIDENTIAL TO JOY TECHNOLOGIES INC. IT MUST NOT BE MADE PUBLIC OR COPIED. IT IS LOANED SUBJECT TO RETURN UPON DEMAND. IS NOT TO BE USED DIRECTLY OR INDIRECTLY IN ANY WAY DETRIMENTAL TO OUR INTEREST.	DR. DATE. SCALE. DATE: 04-19-93 CLASS: 14CM SCALE: NONE	SIMILAR TO PD005930-0000 REPLACES _____ REPLACED BY _____	DR. TOM ALLEN DATE: 04-19-93 CLASS: 14CM SCALE: NONE	PD006016-0000
SY	MICRO INCHES	DESCRIPTION	SY	MICRO INCHES	DESCRIPTION																																										
A	4	PRECISION POLISH	F	125	COMMON MACHINE																																										
B	6	FINE POLISH	G	250	ROUGH MACHINE																																										
C	16	COMMON POLISH	H	500	HEAVY ROUGH																																										
D	32	GRIND OR EQUAL	K	1000	EX HEAVY ROUGH																																										
E	65	SMOOTH MACHINE																																													

SIZE 3	A	B	C	D	E	F	
1000-910900D		SHEET 1 of 1		LOCATION-FITTINGS-HOSE ASSEMBLY		LOCATION-FITTINGS-HOSE ASSEMBLY	
LOCATION-FITTINGS-HOSE ASSEMBLY							
151. HAND VALVE TO TRIPLE TEE 00903686-1612 UNION (1 X 3/4 X 90°) 00915712-0072 HOSE ASS'Y. (SWB) * 00914512-0072 HOSE ASS'Y. (DWB) 00903686-0008 UNION (3/4 X 3/4 X 90°)				158. CROSS (SPECIAL FITTING) TO TEE AT SPRAY NOZZLES 00903686-0006 UNION (1/2 X 1/2 X 90°) 00915708-0086 HOSE ASS'Y. (SWB) * 00914508-0086 HOSE ASS'Y. (DWB) 00903686-0068 UNION (3/8 X 1/2 X 90°)			
152. TEE TO SPRAY BLOCK 00900716-0013 UNION (1/2 X 1/2) 00915708-0048 HOSE ASS'Y. (SWB) * 00914508-0048 HOSE ASS'Y. (DWB) 00903686-0068 UNION (3/8 X 1/2 X 90°)				159. CROSS (SPECIAL FITTING) TO SPRAY BLOCK 00900716-0029 UNION (3/4 X 1/2) 00915708-0028 HOSE ASS'Y. (SWB) * 00914508-0028 HOSE ASS'Y. (DWB) 00903686-0068 UNION (3/8 X 1/2 X 90°)			
153. TEE TO UNION (LINE 154) 00903686-0006 UNION (1/2 X 1/2 X 90°) 00915708-0076 HOSE ASS'Y. (SWB) * 00914508-0076 HOSE ASS'Y. (DWB) 00900718-0004 UNION (1/2 X 1/2)				160. CROSS (SPECIAL FITTING) TO TRIPLE TEE 00903686-0008 UNION (3/4 X 3/4 X 90°) 00915712-0120 HOSE ASS'Y. (SWB) * 00914512-0120 HOSE ASS'Y. (DWB) 00900716-0017 UNION (3/4 X 3/4)			
154. UNION (LINE 153) TO TEE AT SPRAY NOZZLES 00915708-0060 HOSE ASS'Y. (SWB) * 00914508-0060 HOSE ASS'Y. (DWB) 00903686-0068 UNION (3/8 X 1/2 X 90°)				161. TEE AT L.H. FIRE VALVE TO TEE AT WASH DOWN CONNECTION 00903686-0007 UNION (3/4 X 1/2 X 90°) 00915708-0060 HOSE ASS'Y. (SWB) * 00914508-0060 HOSE ASS'Y. (DWB) 00900716-0013 UNION (1/2 X 1/2)			
155. TEE TO SPRAY BLOCK 00900716-0013 UNION (1/2 X 1/2) 00915708-0060 HOSE ASS'Y. (SWB) * 00914508-0060 HOSE ASS'Y. (DWB) 00903686-0068 UNION (3/8 X 1/2 X 90°)							
156. HAND VALVE TO TEE AT CROSS 00900716-0031 UNION (1 X 3/4 X 90°) 00915712-0060 HOSE ASS'Y. (SWB) * 00914512-0060 HOSE ASS'Y. (DWB) 00903686-0008 UNION (3/4 X 3/4 X 90°)							
157. CROSS (SPECIAL FITTING) TO SPRAY BLOCK 00900716-0029 UNION (3/4 X 1/2) 00915708-0086 HOSE ASS'Y. (SWB) * 00914508-0086 HOSE ASS'Y. (DWB) 00903686-0068 UNION (3/8 X 1/2 X 90°)							

LITHOPRINT	PDO06016-0000	00701554-6075 PARTS COMMON * 00701554-6076 PARTS COMMON (DWB)	JOY TECHNOLOGIES INC. FRANKLIN, PENNSYLVANIA 16323	HOSE CHART, FIRE SUPPRESSION	
CAD/CAM DRAWING MANUAL REVISIONS NOT AUTHORIZED.	00712034-6142 HOSE FITTINGS AND ADAPTERS (MPT REUSABLE) * 00712033-6357 HOSE FITTINGS AND ADAPTERS (MPT CRIMP)(DWB)		<small>THIS DRAWING AND ALL INFORMATION THEREIN IS THE PROPERTY OF AND CONFIDENTIAL TO JOY TECHNOLOGIES INC. IT MUST NOT BE MADE PUBLIC OR COPIED IT IS LOANED SUBJECT TO RETURN UPON DEMAND. IS NOT TO BE USED DIRECTLY OR INDIRECTLY IN ANY WAY DETRI- MENTAL TO OUR INTEREST.</small>	<small>SIMILAR TO</small> PDO05930-0001 <small>CHECKED BY</small> R. JOLLEY <small>APPROVED BY</small> R. WELKER	<small>DR</small> TOM ALLEN <small>DATE</small> 04-20-93 <small>CLASS</small> 14CM
ENG ORDER (A) FDE1332	REVISIONS (B) FDE2876 (C) FDE7876				PDO06016-0001 (SHEET 1 of 1)

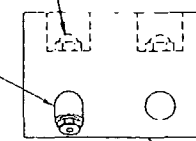


01046348-0037 REF.

01566237-0000 (4 PLACES)

VIEW A-A (ROTATED 180°) (BOTH SIDES OF MACHINE)

00901058-0006 (3/8 X 45°)
00901158-0003 (3/8 X 1/4)



01046348-0091 REF.

VIEW B-B (ROTATED 90°) (BOTH SIDES OF MACHINE)

00915785-0012 REF.
01069626-0002 (HEAT SHRINK TO HANDLE)

SEE PIPING, WATER

SEE PIPING, WATER

FIRE PILOT VALVE 00533872-0002 REF.

00901052-0004
01069367-0040
00048385-0000
00900012 0014 (1/2 X 1)
00900302-0004

00901096-0004
(3) 00901093-0004

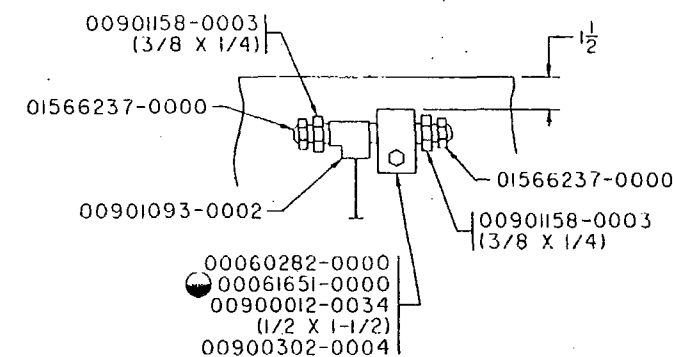
00901052-0004
01069367-0040
00048385-0000
00900012-0014 (1/2 X 1)
00900302-0004

00901096-0004
00901093-0004

00915785-0012 REF.
01069626-0002 (HEAT SHRINK TO HANDLE)

FROM WATER FILTER - SEE PIPING, WATER

TO SPRAYS - SEE PIPING, WATER



VIEW C-C (BOTH SIDES OF MACHINE)

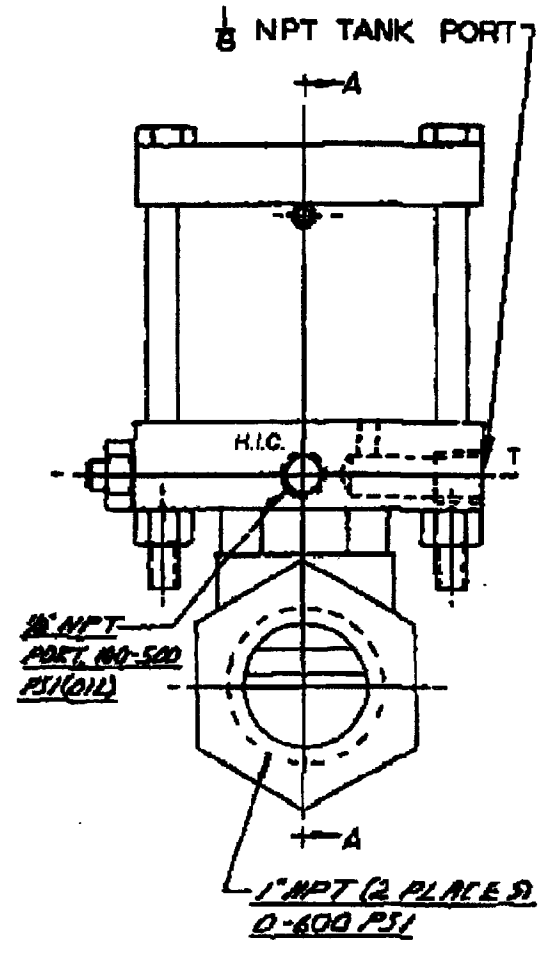
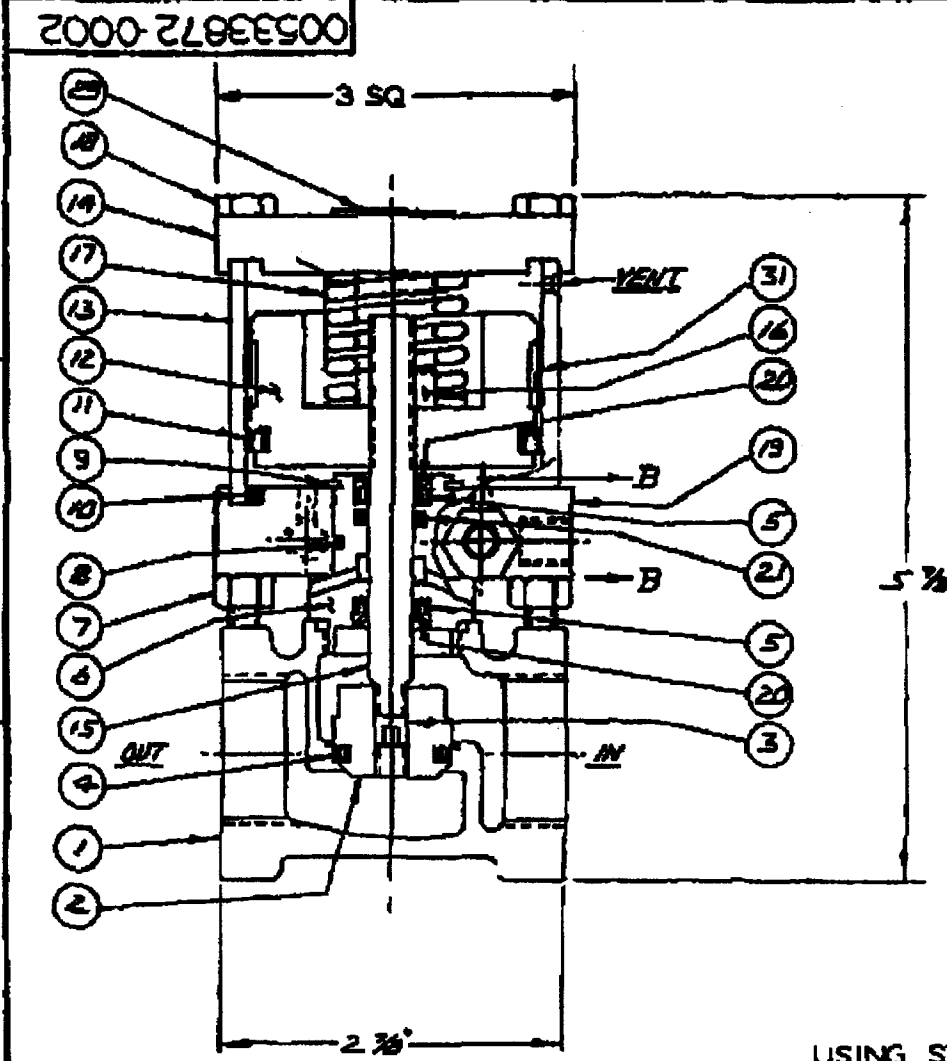
LOCATE AND WELD - 70,000 P.S.I. MINIMUM TENSILE.

ENG ORDER (A) FDE7918	E.O. CHANGE		TOLERANCE TO BE AS SPECIFIED BELOW UNLESS OTHERWISE STATED				FINISH SYMBOLS				DR: R. JOLLEY	PLANT LOCATION FRANKLIN PENNSYLVANIA			
DATE ISSUED			ALL DIMENSIONS IN MILLIMETERS UNLESS OTHERWISE STATED				ALL DIMENSIONS IN INCHES UNLESS OTHERWISE STATED				DATE: 07-27-95				
MATERIAL			MACHINING	FABRICATION PLATE & STRUCTURAL WORK	CASTINGS	WALL THICKNESS	A	B	C	D	E	F	G	TITLE: PIPING, FIRE SUPPRESSION	
HEAT TREAT			± 0.5mm	UP TO 300mm ± 1mm	301 TO 1000mm ± 2mm	1001 TO 2000mm ± 3mm	112-1/2%	4	8	16	32	63	125	250	SCALE: NONE CLASS: 14CM
HARDNESS			ALL DIMENSIONS IN INCHES UNLESS OTHERWISE STATED				ALL DIMENSIONS IN INCHES UNLESS OTHERWISE STATED				DESCRIPTION	DESCRIPTION	DESCRIPTION	DWG. NO. PD005009-0028	
CARBURIZE (ECD)			MACHINING	FABRICATION PLATE & STRUCTURAL WORK	CASTINGS	FRACTIONAL DIMENSIONS	UP TO 12" ± 1/32	12" TO 36" ± 1/16	OVER 36" ± 1/8	WALL THICKNESS ± 12-1/2%	PRECISION POLISH	COMMON MACHINE	COMMON MACHINE		ROUGH MACHINE
PATTERN NO.			DWG. DIMS IMPERIAL <input checked="" type="checkbox"/> METRIC <input type="checkbox"/>			THIS DRAWING AND ALL INFORMATION THEREIN IS THE PROPERTY OF AND CONFIDENTIAL TO JOY TECHNOLOGIES INC. IT MUST NOT BE MADE PUBLIC OR COPIED. IT IS LOANED SUBJECT TO RETURN UPON DEMAND. IS NOT TO BE USED DIRECTLY OR INDIRECTLY IN ANY WAY DETRIMENTAL TO OUR INTEREST.						DATE	REPLACES BY:		

B/M Number	Description	Reference	Date	Sheet
00533872-0002	VALVE, PILOT, WATER, (FIRE)	00533872-0002		01
		FDF6945	06/18/1998	

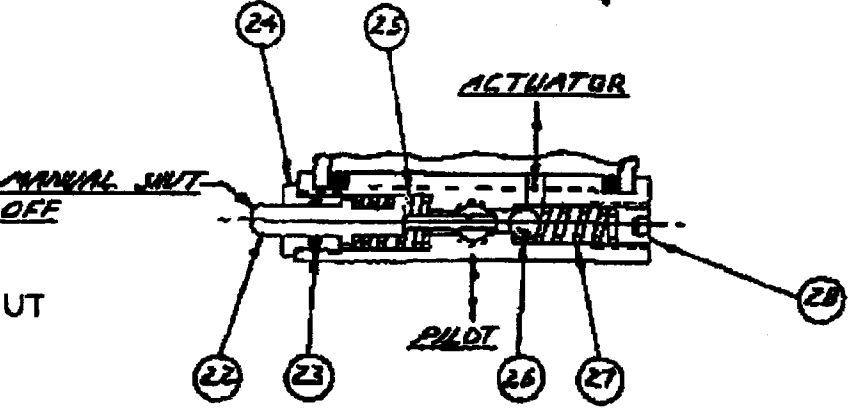
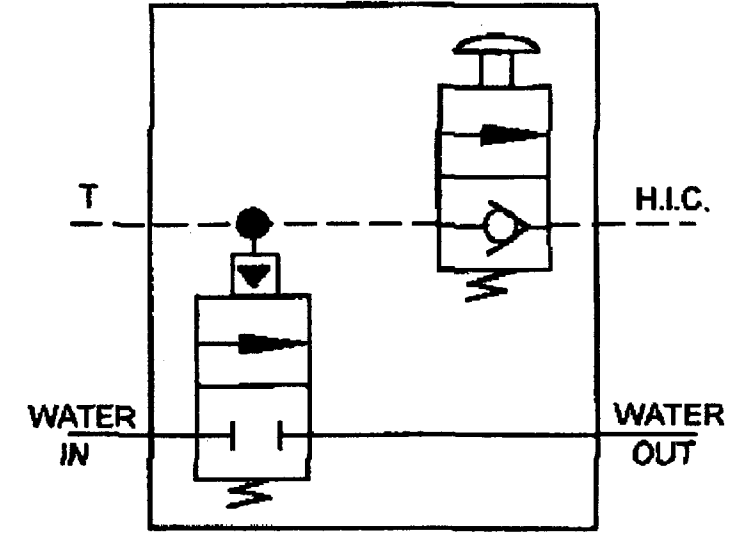
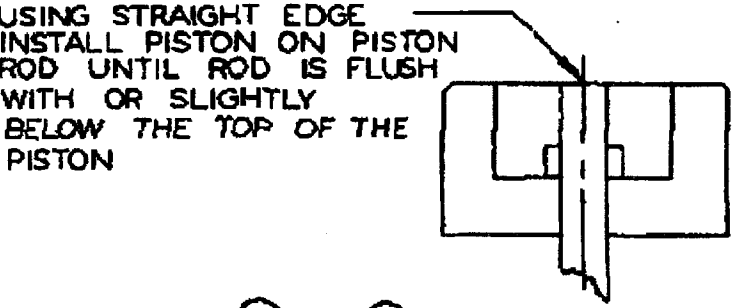
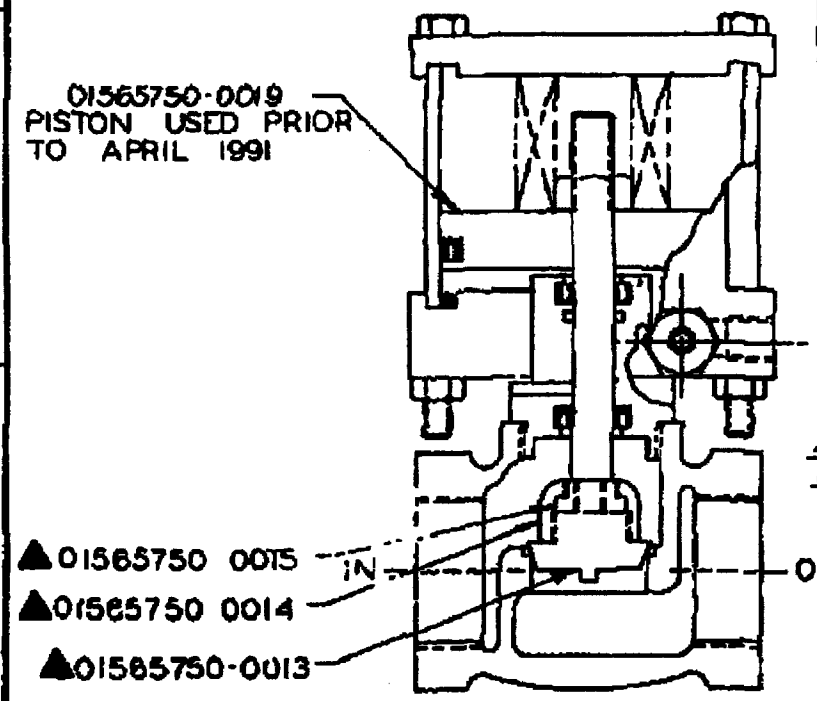
Qty	UOM	Part Number	Description	Ref No
1	EA	01565750-0056	BODY	1
1	EA	01565750-0053	POPPET	2
1	EA	01565750-0054	SCREW, SET	3
1	EA	01565750-0055	U-CUP	4
2	EA	01565750-0016	PISTON	5
1	EA	01565750-0017	GLAND	6
4	EA	00900149-0003	NUT, HEX, JAM, 1/4-20	7
1	EA	00910660-0020	O-RING	8
1	EA	00902095-0100	RING, RETAINING	9
1	EA	00910660-0228	O-RING	10
1	EA	01565750-0057	PISTON, PACKING	11
1	EA	01069857-0031	PISTON	12
1	EA	01565750-0020	TUBE	13
1	EA	01565750-0021	COVER, BLIND END	14
1	EA	01565750-0022	ROD, PISTON	15
1	EA	00900149-0026	NUT, HEX, JAM, 3/8-24	16
1	EA	00905987-0048	SPRING, DIE	17
4	EA	00900042-0111	SCREW, CAP, GR. 8, 1/4-20 X 3-1/2	18
1	EA	01565750-0023	COVER, ROD END	19
2	EA	00902095-0025	RING, RETAINING	20
1	EA	00910660-0110	O-RING	21
1	EA	03069434-0350	PIN, SPECIAL	22
1	EA	01565750-0026	SPRING	25
1	EA	00900572-0005	BALL, GR. 50, 1/4	26
1	EA	01565750-0027	SPRING	27
1	EA	00906201-0048	SCREW, SET, 5/16-24 X 3/8	28
1	EA	00901204-0002	PLUG, SQ. HD., 1/4 NPT	29
1	EA	01069600-0275	STRIP, WEAR	31

***** End of Bill of Material *****



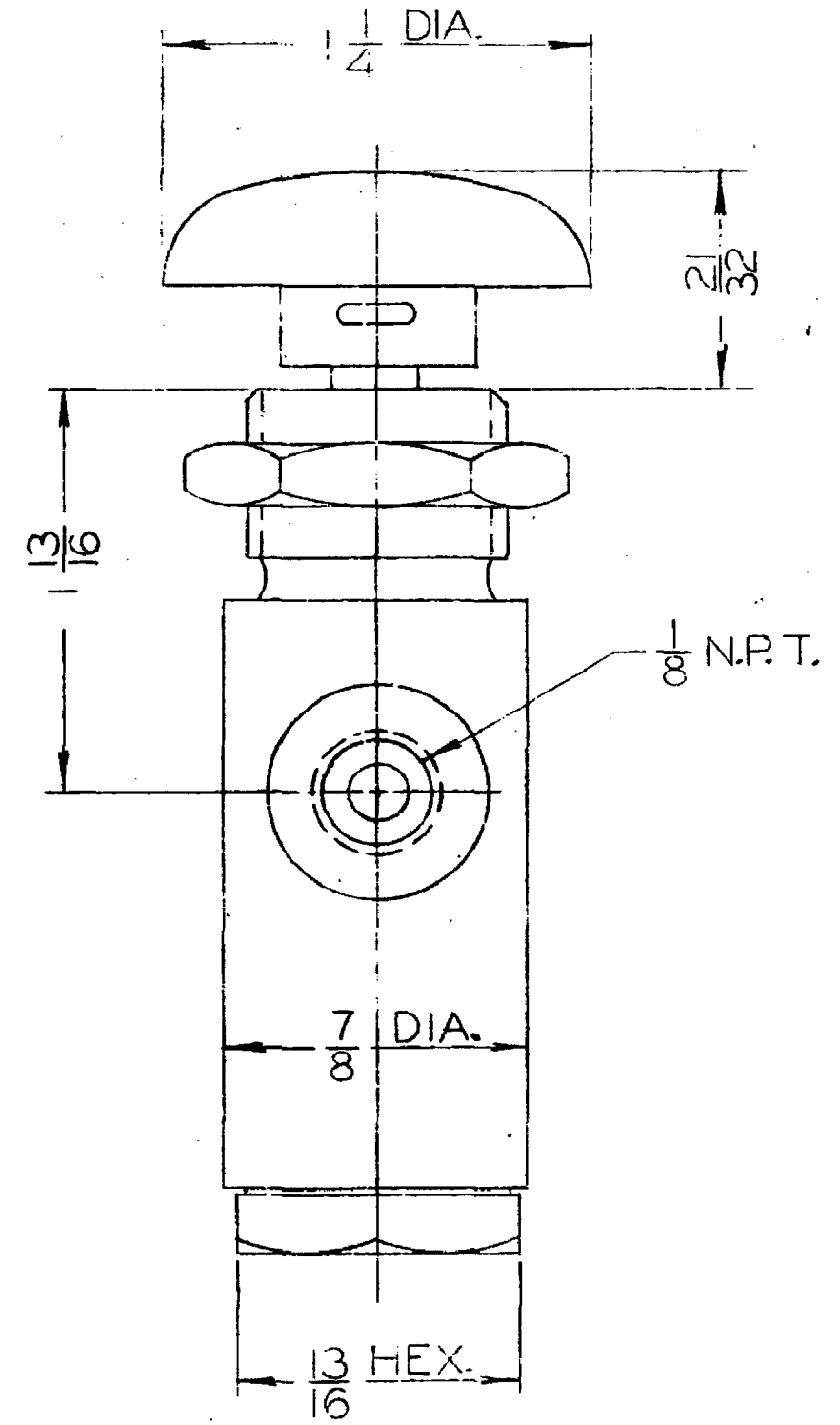
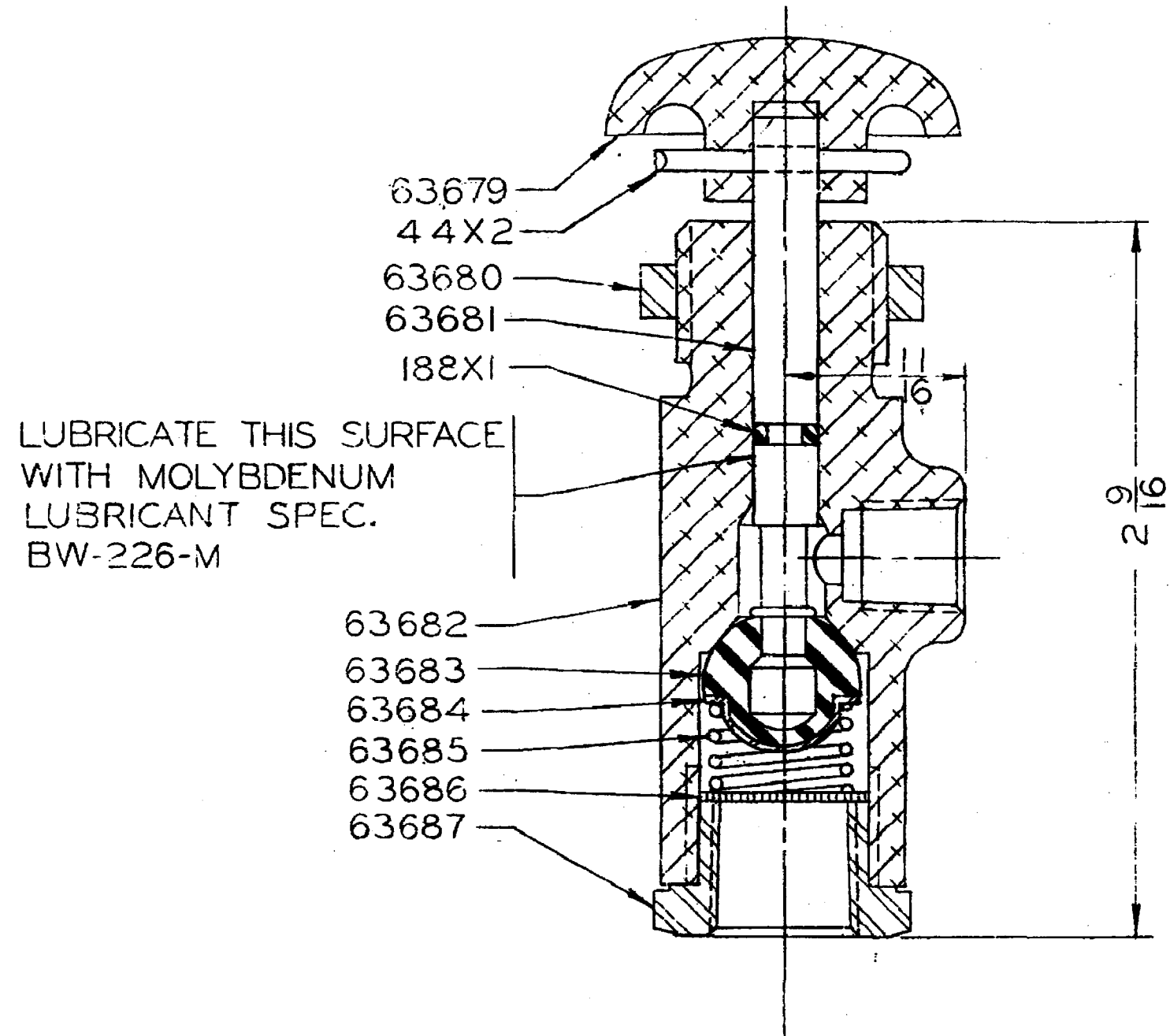
▲ THESE PARTS USED PRIOR TO SEPT 1987

ITEMS 23 & 24 ARE SUPPLIED ONLY IN PIN ASSEMBLY 03069434-0350, ITEM 22



ENG ORDER FBC0376 6	REVISIONS FCE090E FDC019H FDC342I FDC507J FDE0280	PART SYMBOLS 2 22 23 24 25 26 27 28 3 31 32 33 34 35 36 37 38 39 40 41 42 43 44 45 46 47 48 49 50 51 52 53 54 55 56 57 58 59 60 61 62 63 64 65 66 67 68 69 70 71 72 73 74 75 76 77 78 79 80 81 82 83 84 85 86 87 88 89 90 91 92 93 94 95 96 97 98 99 100		JOY TECHNOLOGIES INC. PIONEER POWER, MADE IN USA	VALVE, WATER, 2 WAY
	MATERIAL PATTERN NO LITHO PRINT YES <input type="checkbox"/> NO <input type="checkbox"/>	(M) FDF5974 (N) FDF5945 (13) 1002739	THIS DRAWING AND ALL INFORMATION HEREIN IS THE PROPERTY OF JOY TECHNOLOGIES INC. IT IS TO BE USED ONLY FOR THE PURPOSES SPECIFIED HEREIN. IT IS NOT TO BE REPRODUCED OR TRANSMITTED IN ANY FORM OR BY ANY MEANS, ELECTRONIC OR MECHANICAL, INCLUDING PHOTOCOPYING, RECORDING, OR BY ANY INFORMATION STORAGE AND RETRIEVAL SYSTEM, WITHOUT THE WRITTEN PERMISSION OF JOY TECHNOLOGIES INC.		

A63608



CONFIDENTIAL

THIS DRAWING IS THE PROPERTY OF JOY MANUFACTURING COMPANY. THE INFORMATION CONTAINED HEREON IS CONFIDENTIAL AND MAY NOT BE COPIED OR MADE PUBLIC IN WHOLE OR IN PART, AND MUST BE RETURNED UPON REQUEST.

JOY MANUFACTURING CO.	
PLANT LOCATION AS INDICATED BELOW	
CLAREMONT, N. H.	NEW PHILADELPHIA, O.
DALLAS, TEXAS	ST. LOUIS, MISSOURI
FRANKLIN, PA.	
GALT, ONTARIO, CANADA	
GREENOCK, SCOTLAND	
MICHIGAN CITY, IND.	

CONTROL VALVE

SIMILAR TO _____
 SUPERSEDED BY _____
 REPLACES _____
 REPLACED BY _____

DR. HLD. 11-6-59
 TR. _____
 CK. _____
 APPVD. _____

SCALE *1/2"* CLASS _____
A63608

ENG. ORDER *AM800*
 DATE ISSUED _____ REVISIONS _____