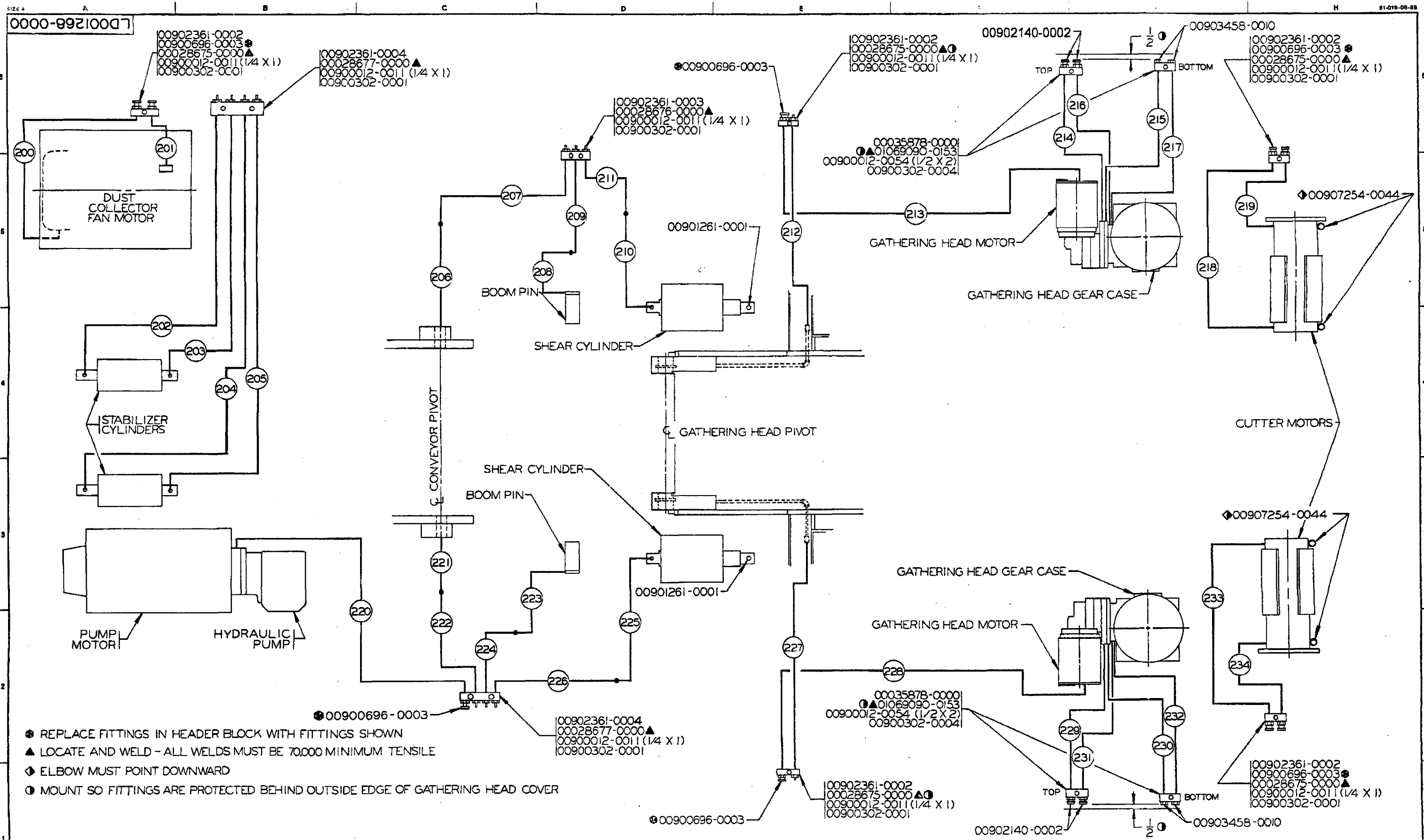


B/M Number	Description	Reference	Date	Sheet
00720474-0022	PIPING, LUBRICATION	LD001268-0000		01
		LD001268-0002		01
		LD001268-0002		02
		FDE2640	10/22/1993	

---

Qty	UOM	Part Number	Description	Ref No
5	EA	00028675-0000	PAD	10
1	EA	00028676-0000	BAR, MOUNTING	20
2	EA	00028677-0000	BAR	30
4	EA	00035878-0000	BLOCK	40
11	EA	00900012-0011	SCREW, CAP, GR. 5, 1/4-20 X 1	50
4	EA	00900012-0054	SCREW, CAP, GR. 5, 1/2-13 X 2	60
11	EA	00900302-0001	WASHER, LOCK, 1/4	70
4	EA	00900302-0004	WASHER, LOCK, 1/2	80
9	EA	00900696-0003	fitting, grease, button, 1/8 ptf	90
10	EA	00901055-0066	ELBOW, STREET, SHORT, 3/8 NPTF	100
2	EA	00901176-0128	NIPPLE, XS, 1/4 X 4 LG	110
2	EA	00901261-0001	GREASE FITTING	120
3	EA	00901272-0006	elbow, 45 x 1/8 nptf x 1/8 nptf	130
4	EA	00901272-0013	elbow, 90 x 1/4 nptf x 1/4 nptf	140
4	EA	00902140-0002	FITTING, LUBE, 1/2 NPTF	150
5	EA	00902361-0002	HEADER, GREASE	160
1	EA	00902361-0003	HEADER, GREASE	170
2	EA	00902361-0004	HEADER, GREASE	180
4	EA	00903458-0010	VENT, BREATHER, 1/2 NPT	190
54	EA	00904015-0004	FITTING, HOSE, 1/4 JIC, REUS., SWB	200
16	EA	00904015-0008	FITTING, HOSE, 1/2 JIC, REUS., SWB	210
6	EA	00905457-0004	UNION, 1/4T	220
25	EA	00907234-0042	ADAPTER, 1/4 T X 1/8 NPTF	230
4	EA	00907234-0044	ADAPTER, 1/4 T X 1/4 NPTF	240
8	EA	00907234-0086	ADAPTER, 1/2 T X 3/8 NPTF	250
8	EA	00907234-0088	ADAPTER, 1/2 T X 1/2 NPTF	260
7	EA	00907254-0042	ELBOW, 90 X 1/4 T X 1/8 NPTF	270
2	EA	00907254-0044	ELBOW, 90 X 1/4 T X 1/4 NPTF	280
2	EA	00907264-0042	ELBOW, 45 X 1/4 T X 1/8 NPTF	290
2	EA	00907274-0044	ELBOW, 90 X 1/4 T X 1/4 NPTF	300
44	M	00907636-0004	HOSE, #4, SWB	310
7	M	00907636-0008	HOSE, #8, SWB	320
4	EA	01069090-0153	BOSS	330

\*\*\*\*\* End of Bill of Material \*\*\*\*\*



- REPLACE FITTINGS IN HEADER BLOCK WITH FITTINGS SHOWN
- ▲ LOCATE AND WELD - ALL WELDS MUST BE 70,000 MINIMUM TENSILE
- ◆ ELBOW MUST POINT DOWNWARD
- ⊙ MOUNT SO FITTINGS ARE PROTECTED BEHIND OUTSIDE EDGE OF GATHERING HEAD COVER

<b>ENG ORDER</b> <b>FDC8032</b>		<b>REVISIONS</b>		<b>FINISH SYMBOLS</b>				<b>JOY TECHNOLOGIES INC.</b> FRANKLIN, PENNSYLVANIA 16823		<b>DIAGRAM, PIPING, LUBRICATION SYSTEM</b>																															
<small>UNLESS OTHERWISE NOTED, ALL DIMENSIONS IN INCHES. MACHINING DIMENSIONS LIMITED TO FRACTIONAL ± 1/64. ANGULAR ± 1/2°. STRUCTURAL DIMENSIONS LIMITED TO ± 1/16. DO NOT SCALE THIS DRAWING.</small>				MATERIAL: _____ HEAT TREAT: _____ HARDNESS: _____ CARBURIZE (RCD): _____		PATTERN NO: _____ LITHO PRINT: YES <input checked="" type="checkbox"/> NO <input type="checkbox"/>		<table border="1"> <tr> <th>INCHES</th> <th>DESCRIPTION</th> <th>INCHES</th> <th>DESCRIPTION</th> </tr> <tr> <td>A 4</td> <td>PRECISION POLISH</td> <td>F 125</td> <td>COMMON MACHINE</td> </tr> <tr> <td>B 8</td> <td>FINE POLISH</td> <td>G 250</td> <td>ROUGH MACHINE</td> </tr> <tr> <td>C 16</td> <td>COMMON POLISH</td> <td>H 500</td> <td>HEAVY ROUGH</td> </tr> <tr> <td>D 32</td> <td>GRIND OR EQUAL</td> <td>X 1000</td> <td>EX HEAVY ROUGH</td> </tr> <tr> <td>E 63</td> <td>SMOOTH MACHINE</td> <td></td> <td></td> </tr> </table>		INCHES	DESCRIPTION	INCHES	DESCRIPTION	A 4	PRECISION POLISH	F 125	COMMON MACHINE	B 8	FINE POLISH	G 250	ROUGH MACHINE	C 16	COMMON POLISH	H 500	HEAVY ROUGH	D 32	GRIND OR EQUAL	X 1000	EX HEAVY ROUGH	E 63	SMOOTH MACHINE			<small>THIS DRAWING AND ALL INFORMATION THEREIN IS THE PROPERTY OF AND CONFIDENTIAL TO JOY TECHNOLOGIES INC. IT MUST NOT BE MADE PUBLIC OR COPIED. IT IS LOANED SUBJECT TO RETURN UPON DEMAND. IS NOT TO BE USED, DIRECTLY OR INDIRECTLY IN ANY WAY DETRIMENTAL TO OUR INTEREST.</small>		SIMILAR TO <b>LD001233-0000</b> REPLACES: _____ REPLACED BY: _____		DR. <b>JOLLEY</b> DATE <b>03-06-82</b> CLASS <b>14cm</b> SCALE _____		<b>LD001268-0000</b>	
INCHES	DESCRIPTION	INCHES	DESCRIPTION																																						
A 4	PRECISION POLISH	F 125	COMMON MACHINE																																						
B 8	FINE POLISH	G 250	ROUGH MACHINE																																						
C 16	COMMON POLISH	H 500	HEAVY ROUGH																																						
D 32	GRIND OR EQUAL	X 1000	EX HEAVY ROUGH																																						
E 63	SMOOTH MACHINE																																								

2000-89210007	SHEET 1 of 2	LOCATION-FITTINGS-HOSE ASSEMBLY	LOCATION-FITTINGS-HOSE ASSEMBLY
<p>200. FAN MOTOR TO HEADER 00907254-0042 ELBOW (1/4T X 1/8 X 90°) *00915804-0050 HOSE ASS'Y. (SWB) #00914604-0050 HOSE ASS'Y. (DWB) 00907234-0042 ADAPTER (1/4T X 1/8)</p> <p>201. FAN MOTOR TO HEADER 00907254-0042 ELBOW (1/4T X 1/8 X 90°) *00915804-0050 HOSE ASS'Y. (SWB) #00914604-0050 HOSE ASS'Y. (DWB) 00907234-0042 ADAPTER (1/4T X 1/8)</p> <p>202. STABILIZER CYLINDER TO HEADER 00907254-0042 ELBOW (1/4T X 1/8 X 90°) *00915804-0104 HOSE ASS'Y. (SWB) #00914604-0104 HOSE ASS'Y. (DWB) 00907234-0042 ADAPTER (1/4T X 1/8)</p> <p>203. STABILIZER CYLINDER TO HEADER 00907254-0042 ELBOW (1/4T X 1/8 X 90°) 00910786-0044 ADAPTER (1/4T X 1/4 X 45°) *00915804-0092 HOSE ASS'Y. (SWB) #00914604-0092 HOSE ASS'Y. (DWB) 00907234-0042 ADAPTER (1/4T X 1/8)</p> <p>204. STABILIZER CYLINDER TO HEADER 00907254-0042 ELBOW (1/4T X 1/8 X 90°) *00915804-0104 HOSE ASS'Y. (SWB) #00914604-0104 HOSE ASS'Y. (DWB) 00907234-0042 ADAPTER (1/4T X 1/8)</p> <p>205. STABILIZER CYLINDER TO HEADER 00907254-0042 ELBOW (1/4T X 1/8 X 90°) 00910786-0044 ADAPTER (1/4T X 1/4 X 45°) *00915804-0092 HOSE ASS'Y. (SWB) #00914604-0092 HOSE ASS'Y. (DWB) 00907234-0042 ADAPTER (1/4T X 1/8)</p> <p>206. CONVEYOR HINGE PIN TO UNION (LINE 207) 00907234-0044 ADAPTER (1/4T X 1/4) *00915804-0036 HOSE ASS'Y. (SWB) #00914604-0036 HOSE ASS'Y. (DWB) 00905457-0004 UNION (1/4T X 1/4T)</p> <p>207. UNION (LINE 206) TO HEADER *00915804-0096 HOSE ASS'Y. (SWB) #00914604-0096 HOSE ASS'Y. (DWB) 00907234-0042 ADAPTER (1/4T X 1/8)</p>	<p>208. BOOM PIN TO UNION (LINE 209) 00901176-0128 NIPPLE (1/4 X 4 LG.) 00907274-0044 ELBOW (1/4T X 1/4 X 90°) *00915804-0036 HOSE ASS'Y. (SWB) #00914604-0036 HOSE ASS'Y. (DWB) 00905457-0004 UNION (1/4T X 1/4T)</p> <p>209. UNION (LINE 208) TO HEADER *00915804-0110 HOSE ASS'Y. (SWB) #00914604-0110 HOSE ASS'Y. (DWB) 00907234-0042 ADAPTER (1/4T X 1/8)</p> <p>210. SHEAR CYLINDER TO UNION (LINE 211) 00907254-0042 ELBOW (1/4T X 1/8 X 90°) *00915804-0072 HOSE ASS'Y. (SWB) #00914604-0072 HOSE ASS'Y. (DWB) 00905457-0004 UNION (1/4T X 1/4T)</p> <p>211. UNION (LINE 210) TO HEADER *00915804-0096 HOSE ASS'Y. (SWB) #00914604-0096 HOSE ASS'Y. (DWB) 00907234-0042 ADAPTER (1/4T X 1/8)</p> <p>212. GATHERING HEAD PIVOT TO HEADER 00907234-0044 ADAPTER (1/4T X 1/4) *00915804-0050 HOSE ASS'Y. (SWB) #00914604-0050 HOSE ASS'Y. (DWB) 00907234-0042 ADAPTER (1/4T X 1/8)</p> <p>213. L.H. GATHERING HEAD MOTOR TO HEADER 00907254-0044 ELBOW (1/4T X 1/4 X 90°) *00915804-0024 HOSE ASS'Y. (SWB) #00914604-0024 HOSE ASS'Y. (DWB) 00907254-0042 ELBOW (1/4T X 1/8 X 90°)</p> <p>214. L.H. GATH. HEAD REDUCER (FILL) TO HEADER 00907234-0086 ADAPTER (1/2T X 3/8) *00915808-0036 HOSE ASS'Y. (SWB) #00914608-0036 HOSE ASS'Y. (DWB) 00907254-0088 ELBOW (1/2T X 1/2 X 90°)</p> <p>215. L.H. GATH. HEAD REDUCER (BREATHER) TO HEADER 00907234-0086 ADAPTER (1/2T X 3/8) *00915808-0036 HOSE ASS'Y. (SWB) #00914608-0036 HOSE ASS'Y. (DWB) 00907254-0088 ELBOW (1/2T X 1/2 X 90°)</p> <p>216. L.H. GATH. HEAD GEAR CASE (FILL) TO HEADER 00907234-0086 ADAPTER (1/2T X 3/8) *00915808-0036 HOSE ASS'Y. (SWB) #00914608-0036 HOSE ASS'Y. (DWB) 00907254-0088 ELBOW (1/2T X 1/2 X 90°)</p>	<p>217. L.H. GATH. HEAD GEAR CASE (BREATHER) TO HEADER 00907234-0086 ADAPTER (1/2T X 3/8) *00915808-0036 HOSE ASS'Y. (SWB) #00914608-0036 HOSE ASS'Y. (DWB) 00907254-0088 ELBOW (1/2T X 1/2 X 90°)</p> <p>218. CUTTER MOTOR TO HEADER 00907234-0042 ADAPTER (1/4T X 1/8) *00915804-0050 HOSE ASS'Y. (SWB) #00914604-0050 HOSE ASS'Y. (DWB) 00907234-0042 ADAPTER (1/4T X 1/8)</p> <p>219. CUTTER MOTOR TO HEADER 00907234-0042 ADAPTER (1/4T X 1/8) *00915804-0024 HOSE ASS'Y. (SWB) #00914604-0024 HOSE ASS'Y. (DWB) 00907234-0042 ADAPTER (1/4T X 1/8)</p> <p>220. PUMP MOTOR TO HEADER 00901272-0006 ELBOW (1/8 X 1/8 X 45°) 00907234-0042 ADAPTER (1/4T X 1/8) *00915804-0060 HOSE ASS'Y. (SWB) #00914604-0060 HOSE ASS'Y. (DWB) 00907234-0042 ADAPTER (1/4T X 1/8)</p> <p>221. CONVEYOR HINGE PIN TO UNION (LINE 222) 00907234-0044 ADAPTER (1/4T X 1/4) *00915804-0036 HOSE ASS'Y. (SWB) #00914604-0036 HOSE ASS'Y. (DWB) 00905457-0004 UNION (1/4T X 1/4T)</p> <p>222. UNION (LINE 221) TO HEADER *00915804-0096 HOSE ASS'Y. (SWB) #00914604-0096 HOSE ASS'Y. (DWB) 00907234-0042 ADAPTER (1/4T X 1/8)</p> <p>223. BOOM PIN TO UNION (LINE 224) 00901176-0128 NIPPLE (1/4 X 4 LG.) 00907274-0044 ELBOW (1/4T X 1/4 X 90°) *00915804-0036 HOSE ASS'Y. (SWB) #00914604-0036 HOSE ASS'Y. (DWB) 00905457-0004 UNION (1/4T X 1/4T)</p> <p>224. UNION (LINE 223) TO HEADER *00915804-0110 HOSE ASS'Y. (SWB) #00914604-0110 HOSE ASS'Y. (DWB) 00907234-0042 ADAPTER (1/4T X 1/8)</p>	

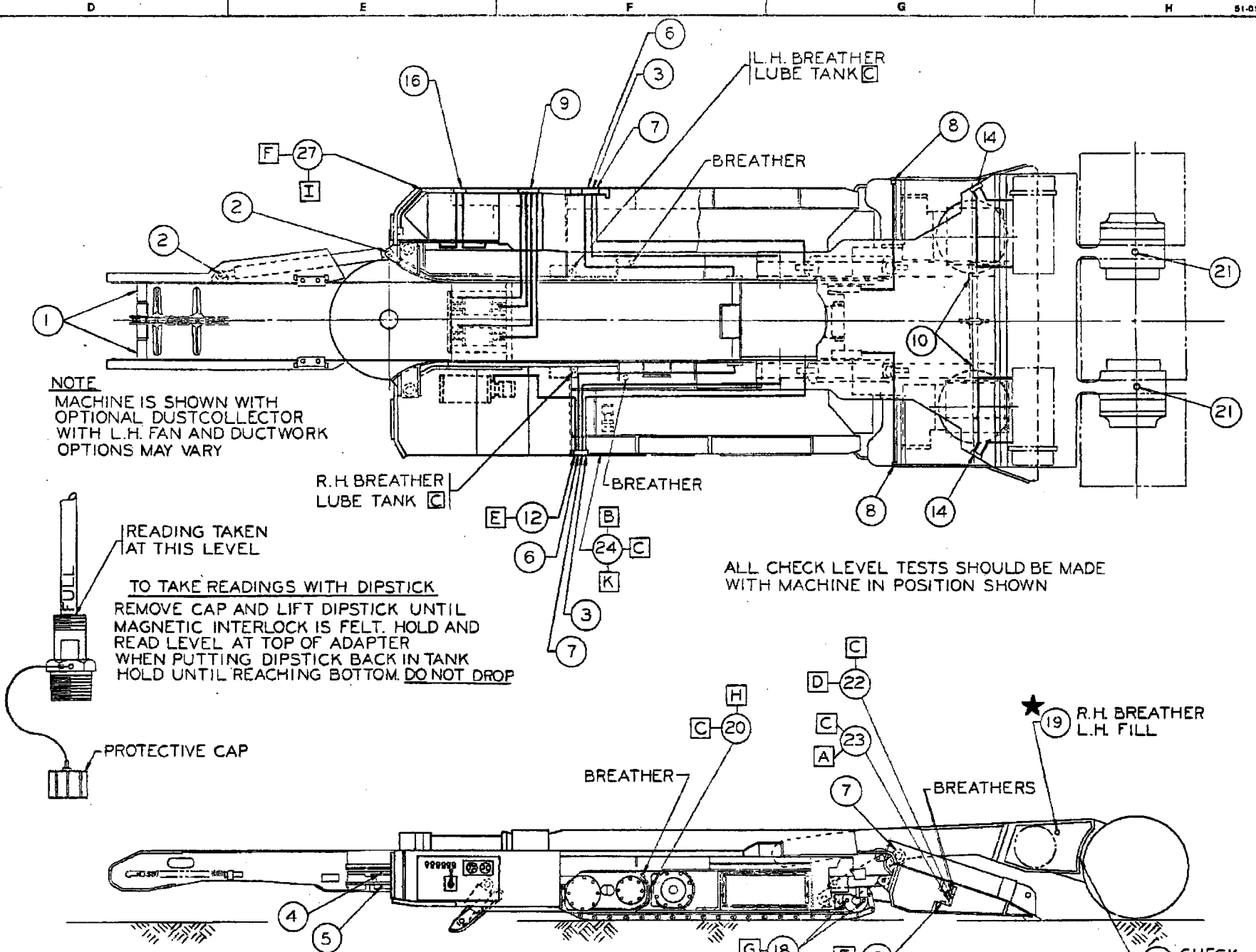
LITHOPRINT	LD001268-0000	* 00700067-6054 PARTS COMMON	JOY TECHNOLOGIES INC. FRANKLIN, PENNSYLVANIA 16323	HOSE CHART. LUBRICATION SYSTEM	
CAD/CAM DRAWING MANUAL REVISIONS NOT AUTHORIZED.	* 00712032-6233 HOSE FITTINGS AND ADAPTERS (JIC REUSABLE)	# 00720474-0034 PIPING, LUBRICATION (JIC CRIMP)	THIS DRAWING AND ALL INFORMATION THEREIN IS THE PROPERTY OF AND CONFIDENTIAL TO JOY TECHNOLOGIES INC. IT MUST NOT BE MADE PUBLIC OR COPIED. IT IS LOANED SUBJECT TO RETURN UPON DEMAND. IS NOT TO BE USED DIRECTLY OR INDIRECTLY IN ANY WAY DETRI- MENTAL TO OUR INTEREST.	SIMILAR TO LD001233-0002	DR. RANDY JOLLEY DATE 03-05-92 CLASS 15CM
ENG ORDER	FDC8032	REVISIONS @FDE3193 @IMG0001			
	A	B	C	D	E F

LD001268-0002  
(SHEET 1 of 2)

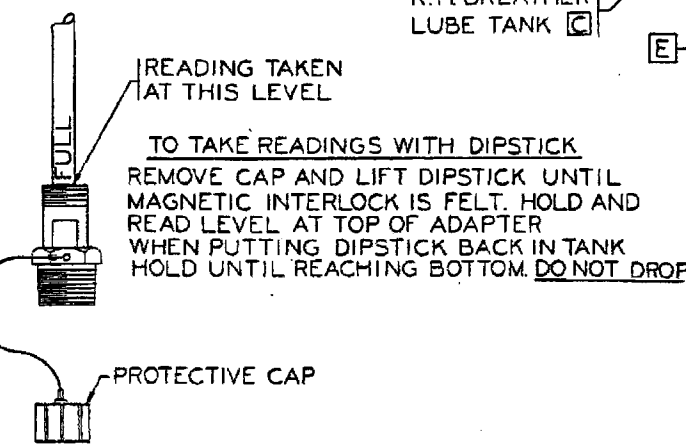
SIZE	A	B	C	D	E	F
	2000-8921007	2 FITTINGS	LOCATION-FITTINGS-HOSE ASSEMBLY		LOCATION-FITTINGS-HOSE ASSEMBLY	
	LOCATION-FITTINGS-HOSE ASSEMBLY					
5	225. SHEAR CYLINDER TO UNION (LINE 226) 00907254-0042 ELBOW (1/4T X 1/8 X 90°) *00915804-0072 HOSE ASS'Y. (SWB) *00914604-0072 HOSE ASS'Y. (DWB) 00905457-0004 UNION (1/4T X 1/4T)		233. CUTTER MOTOR TO HEADER 00907234-0042 ADAPTER (1/4T X 1/8) *00915804-0050 HOSE ASS'Y. (SWB) *00914604-0050 HOSE ASS'Y. (DWB) 00907234-0042 ADAPTER (1/4T X 1/8)			
4	226. UNION (LINE 225) TO HEADER *00915804-0096 HOSE ASS'Y. (SWB) *00914604-0096 HOSE ASS'Y. (DWB) 00907234-0042 ADAPTER (1/4T X 1/8)		234. CUTTER MOTOR TO HEADER 00907234-0042 ADAPTER (1/4T X 1/8) *00915804-0024 HOSE ASS'Y. (SWB) *00914604-0024 HOSE ASS'Y. (DWB) 00907234-0042 ADAPTER (1/4T X 1/8)			
3	227. GATHERING HEAD PIVOT TO HEADER 00907234-0044 ADAPTER (1/4T X 1/4) *00915804-0058 HOSE ASS'Y. (SWB) *00914604-0058 HOSE ASS'Y. (DWB) 00907234-0042 ADAPTER (1/4T X 1/8)					
2	228. R.H. GATHERING HEAD MOTOR TO HEADER 00907254-0044 ELBOW (1/4T X 1/4 X 90°) *00915804-0024 HOSE ASS'Y. (SWB) *00914604-0024 HOSE ASS'Y. (DWB) 00907254-0042 ELBOW (1/4T X 1/8 X 90°)					
1	229. R.H. GATH. HEAD REDUCER (FILL) TO HEADER 00907234-0086 ADAPTER (1/2T X 3/8) *00915808-0038 HOSE ASS'Y. (SWB) *00914608-0038 HOSE ASS'Y. (DWB) 00907254-0088 ELBOW (1/2T X 1/2 X 90°)					
	230. R.H. GATH. HEAD REDUCER (BREATHING) TO HEADER 00907234-0086 ADAPTER (1/2T X 3/8) *00915808-0038 HOSE ASS'Y. (SWB) *00914608-0038 HOSE ASS'Y. (DWB) 00907254-0088 ELBOW (1/2T X 1/2 X 90°)					
	231. R.H. GATH. HEAD GEAR CASE (FILL) TO HEADER 00907234-0086 ADAPTER (1/2T X 3/8) *00915808-0038 HOSE ASS'Y. (SWB) *00914608-0038 HOSE ASS'Y. (DWB) 00907254-0088 ELBOW (1/2T X 1/2 X 90°)					
	232. R.H. GATH. HEAD GEAR CASE (BREATHING) TO HEADER 00907234-0086 ADAPTER (1/2T X 3/8) *00915808-0038 HOSE ASS'Y. (SWB) *00914608-0038 HOSE ASS'Y. (DWB) 00907254-0088 ELBOW (1/2T X 1/2 X 90°)					

LITHOPRINT	LD001268-0000	* 00700067-6054 PARTS COMMON	JOY TECHNOLOGIES INC. HARRISBURG, PENNSYLVANIA 17133	HOSE CHART. LUBRICATION SYSTEM	
CAD/CAM DRAWING MANUAL REVISIONS NOT AUTHORIZED	* 80712032-6233 HOSE FITTINGS AND ADAPTERS (JIC REUSABLE)	* 00720474-0034 PIPING, LUBRICATION (JIC CRIMP)	THIS DRAWING AND ALL INFORMATION THEREIN IS THE PROPERTY OF AND CONFIDENTIAL TO JOY TECHNOLOGIES INC. IT MUST NOT BE MADE PUBLIC OR COPIED. IT IS LOANED SUBJECT TO RETURN UPON DEMAND. IS NOT TO BE USED DIRECTLY OR INDIRECTLY IN ANY WAY DETRI- MENTAL TO OUR INTEREST.	SIMILAR TO LD001233-0002	DR. RANDY JOLLEY DATE 03-05-92 CLASS 14CM
ENG ORDER FDC8032	REVISIONS @ FDC3493			CHECKED BY	LD001268-0002 (SHEET 2 of 2)

NO	LOCATION	LUBE	INTERVAL	CAP.
1	CONVEYOR TAIL ROLLER	BG-H	EVERY 3 SHIFTS	
2	CONVEYOR SWING CYLINDER PINS	BG-H	EVERY 3 SHIFTS	
3	CUTTER BOOM PIVOT R.H./L.H.	BG-H	EVERY SHIFT	
4	CONVEYOR HINGE PIN R.H. TOP	BG-H	EVERY SHIFT	
5	CONVEYOR HINGE PIN R.H. BOTTOM	BG-H	EVERY SHIFT	
6	REAR CONVEYOR PIVOT R.H./L.H.	BG-H	EVERY 3 SHIFTS	
7	SHEAR CYLINDER R.H./L.H.	BG-H	EVERY SHIFT	
8	GATHERING HEAD PIVOT R.H./L.H.	BG-H	EVERY SHIFT	
9	STABILIZER CYLINDER	BG-H	EVERY 3 SHIFTS	
10	FOOT ROLLER	BG-H	EVERY 6 MONTHS	
11				
12	PUMP DRIVE MOTOR	BG-M	EVERY 60 SHIFTS	
13	GATHERING HEAD MOTOR R.H./L.H.	BG-M	EVERY 20 SHIFTS	
14	CUTTER MOTOR R.H./L.H.	BG-M	EVERY 20 SHIFTS	
15				
16	DUST COLLECTOR FAN	BG-M	EVERY 60 SHIFTS	
17				
18	TRACTION IDLER R.H./L.H.	TO-HEP	EVERY 10 SHIFTS	2 PT. EA.
19	CUTTER HEAD GEAR CASE R.H./L.H.	TO-HEP	KEEP FILLED TO LEVEL-EVERY SHIFT	22 GAL
20	TRACTION PLANETARY & REDUCER CASE R.H./L.H.	TO-HEP	KEEP FILLED TO LEVEL-EVERY SHIFT	6 GAL EACH
21	CUTTER HEAD DRUM CASE R.H./L.H.	TO-HEP	KEEP FILLED EVERY SHIFT	3 GAL EACH
22	GATHERING HEAD GEAR CASE R.H./L.H.	TO-HEP	KEEP FILLED EVERY SHIFT	3 GAL EACH
23	GATHERING HEAD REDUCER CASE R.H./L.H.	TO-HEP	KEEP FILLED TO LEVEL-EVERY SHIFT	2-1/2 GAL EACH
24	GEAR CASE FILL LUBRICATION SYSTEM	TO-HEP	KEEP FILLED EVERY SHIFT	12 GAL
25				
26				
27	HYDRAULIC SYSTEM	HO-S	KEEP FILLED EVERY SHIFT	72 GAL
28				



NOTE  
MACHINE IS SHOWN WITH  
OPTIONAL DUST COLLECTOR  
WITH L.H. FAN AND DUCTWORK  
OPTIONS MAY VARY



ALL CHECK LEVEL TESTS SHOULD BE MADE  
WITH MACHINE IN POSITION SHOWN

A FILL AND CHECK LEVEL AT THIS PORT.  
DO NOT OVERFILL GEARCASES

B. OPTIONAL EQUIPMENT. REFER TO NOTES C. & K.

C. THESE GEARCASES AND REDUCERS MAY BE  
FILLED USING THE OPTIONAL GEARCASE  
FILL LUBRICATION SYSTEM. REFER TO SALES  
ORDER FOR CORRECT POWER LUBRICATION DRAWING

D. FILL UNTIL LUBRICANT FLOWS OUT OF BREATHER

E. PUMP MOTOR AND GATHERING HEAD MOTORS  
HAVE RELIEVING TYPE GREASE FITTINGS.  
GREASE WILL RELIEVE AROUND THREADS  
WHEN MOTOR BEARINGS ARE FULL.

F. CLEAN MAGNET EVERY 15 SHIFTS. HYDRAULIC  
AND LUBRICATION SYSTEMS.

G REMOVE BOTH PLUGS LUBRICATE ONE PORT  
UNTIL OIL FLOWS OUT OTHER PORT

H. FILL AND ALLOW TO SET FOR 5 MIN. TO ASSURE  
THAT CASE HAS FILLED TO CHECK LEVEL

I FILL HYDRAULIC SYSTEM THRU INJECTOR FILL  
UNTIL PROPER LEVEL IS INDICATED ON DIPSTICK  
OR SIGHT GAUGE. ONLY MACHINES WITH CHASSIS  
CROSSOVER DUCTWORK ARE EQUIPPED WITH SIGHTGAUGE.

K. FILL OPTIONAL GEAR CASE LUBE RESERVOIR THRU FILL  
POINT PROVIDED AT R.H. SIDE OF MACHINE  
OIL WILL PASS THRU FILTER. FILL UNTIL OIL FLOWS  
OUT OF LUBE SYSTEM BREATHER.

★ UNDER SEVERE CUTTING CONDITIONS LUBRICANT IN  
CUTTER HEAD GEAR CASE SHOULD BE CHANGED  
EVERY 60 SHIFTS

**LUBRICATION NOTES**  
1. USE BG-H IN ALL ELECTRIC MOTORS WITH  
BG-Y AS THE ONLY ALTERNATE.  
2. FOR MOTOR APPLICATIONS WHERE GREASE  
TEMPERATURES EXCEED 330°F. USE BG-Y.  
3. USE BG-Y OR BG-H AS ALTERNATES TO  
BG-H FOR GENERAL CHASSIS LUBE.

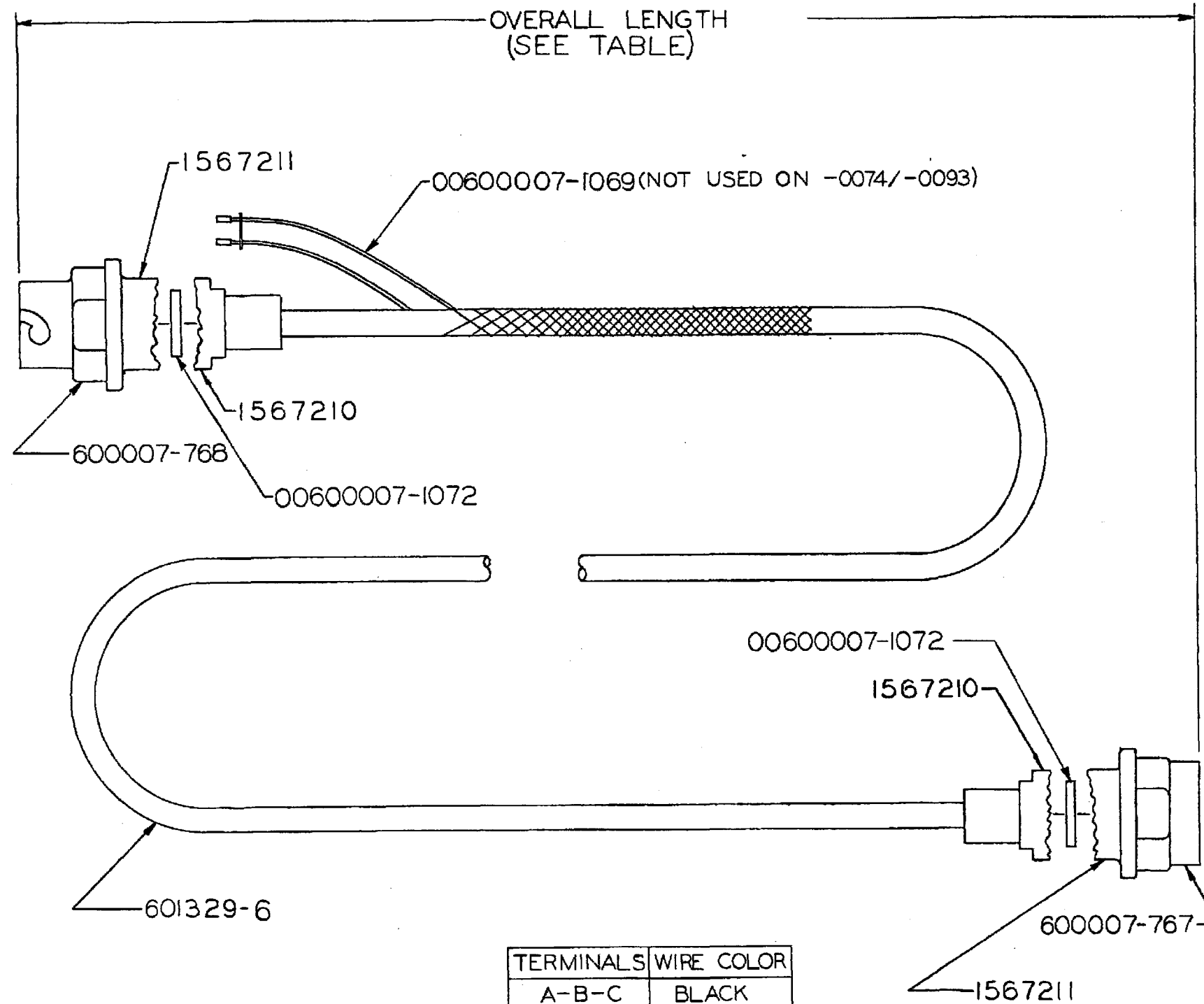
ENG ORDER FDC8032	REVISIONS	© FDE8600	FINISH SYMBOLS		JOY TECHNOLOGIES INC. FRANKLIN, PENNSYLVANIA 16823	DIAGRAM, LUBRICATION (36" / 38" CUTTER DIAMETER)
UNLESS OTHERWISE NOTED: ALL DIMENSIONS IN INCHES; MACHINING DIMENSIONS LIMITED TO FRACTIONAL PARTS OF AN INCH; ANGULAR ± 1/2°; STRUCTURAL DIMENSIONS LIMITED TO ± 1/16". DO NOT SCALE THIS DRAWING.			MATERIAL	PATTERN NO	LITHOPRINT YES <input checked="" type="checkbox"/> NO <input type="checkbox"/>	THIS DRAWING AND ALL INFORMATION THEREIN IS THE PROPERTY OF AND CONFIDENTIAL TO JOY TECHNOLOGIES INC. IT MUST NOT BE MADE PUBLIC OR COPIED. IT IS LOANED SUBJECT TO RETURN UPON DEMAND. IS NOT TO BE USED DIRECTLY OR INDIRECTLY IN ANY WAY DETRIMENTAL TO OUR INTEREST.
			3/16 MICRO INCHES	DESCRIPTION	3/16 MICRO INCHES	DESCRIPTION
			A 4	PRECISION POLISH	F 125	COMMON MACHINE
			B 6	FINE POLISH	G 250	ROUGH MACHINE
			C 16	COMMON POLISH	H 500	HEAVY ROUGH
			D 32	GRIND OR EQUAL	K 1000	EX HEAVY ROUGH
			E 63	SMOOTH MACHINE		
			SIMILAR TO LD000778-0040		DATE 03-92	CLASS 14CM09715
			REPLACES		SCALE	LD000778-0053

B/M Number	Description	Reference	Date	Sheet
00570452-0051	CABLE, REMOTE CONTROL	00570452-0051		01
		FDF7957	09/17/1998	

---

Qty	UOM	Part Number	Description	Ref No
1	EA	00600007-0767	PLUG, 10 CONTACT	10
1	EA	00600007-0768	PLUG	20
1	EA	00600007-0795	GRIP, CABLE	30
12	M	00601329-0006	CABLE, TYPE "SO", RD, #14-3C, FT	40
2	EA	01567210-0000	ADAPTER, CONNECTOR	50
2	EA	01567211-0000	ADAPTER, CONNECTOR	60

\*\*\*\*\* End of Bill of Material \*\*\*\*\*



CABLE ASSEMBLY TOLERANCES

10 FT AND UNDER	+2 IN
OVER 10 FT TO 20 FT	+4 IN
OVER 20 FT AND UP	+12 IN

TERMINALS	WIRE COLOR
A-B-C	BLACK
D-E-F	GREEN
K-J-L	WHITE

00570452-0122	15'
00570452-0115	500'
570452-74	2'
570452-93	3'
570452-59	7'
570452-51	40'
CABLE ASSY.	LENGTH

DO NOT CHANGE WITHOUT APPROVAL OF MSHA

LITHOPRINT THIS DRAWING

E. G. FBV/597 REVISIONS FBY489 FCB 155 FCE 27 FCP28 FDB0012 FDC4064 FDC6832

**JOY MANUFACTURING CO.**  
PLANT LOCATION AS INDICATED BELOW

BUFFALO, N. Y.	NEW PHILADELPHIA, G.
CLAREMONT, N. H.	
FRANKLIN, PA.	<input checked="" type="checkbox"/>
SALT, ONTARIO, CANADA	
GREENOCK, SCOTLAND	
MICHIGAN CITY, IND.	

CABLE ASSEMBLY

SIMILAR TO _____	NAME OR INITIAL & DATE	SCALE FULL CLASS SDRC
SUPERSEDED BY _____	DR. L. C. K. 4/15/77	
SUPERSEDED BY _____	CHK _____	570452-51
REPLACES _____	APPD _____	

B/M Number	Description	Reference	Date	Sheet
03069842-0002	PUNCH, SLEEVE	FCQ0427	09/14/1992	

-----

Qty	UOM	Part Number	Description	Ref No
1	EA	01069842-0013	TOOL, INSTALLATION,SCREW	10
1	EA	01069842-0014	TOOL, INSTALLATION,NUT	20
1	EA	01069842-0015	TOOL, INSTALLATION,SPACER	30

\*\*\*\*\* End of Bill of Material \*\*\*\*\*



B/M Number	Description	Reference	Date	Sheet
00700045-0222	LIST, TOOL	FDF6810	03/18/1998	

-----

Qty	UOM	Part Number	Description	Ref No
3	EA	00061799-0000	SHIM	10
1	EA	00064522-0000	WRENCH	20
1	EA	00809915-0000	TAPE, 3/4, GLASS MICA MYLAR	30
1	EA	00809916-0000	TAPE, 3/4, ADHESIVE GLASS CLOTH	40
1	EA	00809921-0000	TAPE, 3/4, FIBERGLASS (36 YD. ROLL)	50
1	EA	00906667-0136	TOOL, SEAL	60
1	EA	00906667-0137	TOOL, SEAL	70
1	EA	00906667-0148	TOOL, SEAL	80
2	EA	01069533-0373	SHIM, SPECIAL	90
2	EA	01069533-0374	SHIM, SPECIAL	100
2	EA	01069533-0375	SHIM, SPECIAL	110
2	EA	01069533-0376	SHIM, SPECIAL	120
2	EA	01069533-0377	SHIM, SPECIAL	130
1	EA	01566392-0007	TOOL, INSTALLER, RING, HOG	140
1	EA	01567332-0000	INSTALLER, RING, HOG	150
1	EA	01567333-0000	INSTALLER, RING, HOG	160
1	EA	01567663-0000	TOOL, REMOVER, RING, HOG	170
1	EA	03069624-0013	TOOL, SPECIAL, GLAND ASS'Y	180

\*\*\*\*\* End of Bill of Material \*\*\*\*\*

B/M Number	Description	Reference	Date	Sheet
03069624-0013	TOOL, SPECIAL, GLAND ASS'Y	03069624-0013 FDE4254	06/29/1994	01

---

Qty	UOM	Part Number	Description	Ref No
1	EA	00925447-1226	SCREW, CAP, CL. 12.9, M12 X 1.75 X 60	10
10	EA	00925448-0813	SCREW, CAP, CL. 12.9, M8 X 1.25 X 16	20
5	EA	00925472-0617	SCREW, SET, M6 X 25-45H	30
1	EA	00925498-1200	WASHER, FLAT, GR. A, CLASS 300HV, M12	40
1	EA	01069367-2113	KEEPER, 50.8 MM ENTRY (FLP)	50
1	EA	01069367-2114	KEEPER, 63.5 MM ENTRY (flp)	60
1	EA	01069367-2115	KEEPER, 76.2 MM ENTRY (FLP)	70
1	EA	01069367-2116	KEEPER, 95.3 MM ENTRY (FLP)	80
1	EA	01069367-2117	KEEPER, 108 MM ENTRY	90
1	EA	01069444-0168	PLATE, MOUNTING	100
1	EA	01069650-0067	WRENCH, SPECIAL	110
1	EA	01069650-0068	WRENCH, SPECIAL	120
1	EA	01069650-0069	WRENCH, SPECIAL	130
1	EA	01069650-0070	WRENCH, SPECIAL	140
1	EA	01069650-0071	WRENCH, SPECIAL	150

\*\*\*\*\* End of Bill of Material \*\*\*\*\*



B/M Number	Description	Reference	Date	Sheet
00700054-0312	LIST, PLATE, NAME	SK025058-0012		01
		SK025058-0012		02
		FDE9466	02/06/1996	

Qty	UOM	Part Number	Description	Ref No
1	EA	00006564-0004	PLATE, APPROVAL (ENGLISH)	10
192	EA	00900257-0013	SCREW, MACHINE, #6 X 1/4	20
4	EA	00900257-0028	SCREW, MACHINE, #14 X 1/2	30
2	EA	00903245-0005	PLATE, NAME, JOY LOGO	40
1	EA	01069448-0181	PLATE, NAME (METH. MONITOR WARNING)	50
2	EA	01069448-0232	PLATE, NAME (HYD TAKE-UP)	60
6	EA	01069448-0362	PLATE, NAME (FILL & CHECK)	70
1	EA	01069448-0364	PLATE, NAME (FIRE SUPPRESSION RELEASE)	80
1	EA	01069448-0834	PLATE, NAME (CAUTION)	90
3	EA	01069448-1039	PLATE, NAME (DANGER)	100
5	EA	01069448-1040	PLATE, NAME (POWER DANGER)	110
1	EA	01069448-1059	PLATE, NAME (RELIEVE HYD PRESS)	120
3	EA	01069448-1060	PLATE, NAME (RELIEF PRESSURE)	130
1	EA	01069448-1075	PLATE, NAME (CONV. GUARD WARNING)	140
2	EA	01069448-1095	PLATE, NAME, PROP C-HEAD	150
1	EA	01069448-1135	PLATE, NAME (WARNING, OPERATOR STATION)	160
3	EA	01069448-1143	PLATE, NAME (FOOT WARNING)	170
1	EA	01069448-1163	PLATE, NAME	180
2	EA	01069448-1189	PLATE, NAME	190
2	EA	01069448-1229	PLATE, NAME (POWER OFF, PROP CONVEYOR)	200
2	EA	01069448-1238	PLATE, NAME (MOVING MACHINE WARNING)	210
2	EA	01069448-1241	PLATE, NAME (STAY CLEAR)	220
1	EA	01069448-1252	PLATE, NAME (SAFETY INST.)	230
1	EA	01069448-1359	PLATE, NAME (PRESSURE CHECK)	240
1	EA	01069448-1360	PLATE, NAME	250
1	EA	01069448-1368	PLATE, NAME (GATH. HEAD SEQUENCE)	260
1	EA	01069448-1369	PLATE, NAME (SHEAR COUNTER BALANCE)	270
3	EA	01069448-1377	PLATE, NAME (BLEED GATH. HEAD) (ENGLISH)	280
1	EA	01069448-1543	PLATE, NAME 'WATER SPRAY'	290
1	EA	01069448-1544	PLATE, NAME, 'BLOCKING SPRAY'	300
1	EA	01069448-1545	PLATE, NAME, 'SPRAY DIRECTION'	310
1	EA	01069448-1978	PLATE, NAME	320
1	EA	01069448-1986	PLATE, NAME	330
1	EA	01069448-2010	PLATE, NAME (CONV. CHAIN ADJ.) (ENGLISH)	340
1	EA	01069448-2593	PLATE, NAME (DUST COLLECTOR CFM MAINT.)	350
6	EA	01069448-2912	PLATE, NAME (TRANSMISSION OIL)	360
1	EA	01190149-0009	PLATE, NAME (LOW OIL LEVEL)	370
1	EA	01190149-0010	PLATE, NAME (HIGH OIL LEVEL)	380
1	EA	01190149-0136	PLATE, NAME (LOADLOCK) (ENGLISH)	390
1	EA	01190149-0137	PLATE, NAME (TEST DAILY) (ENGLISH)	400
1	EA	01190149-0138	PLATE, NAME (LOAD LOCKING) (ENGLISH)	410
1	EA	01190149-0154	PLATE, NAME (BY-PASS VALVE)	420

B/M Number	Description	Reference	Date	Sheet
00700054-0312	LIST, PLATE, NAME			

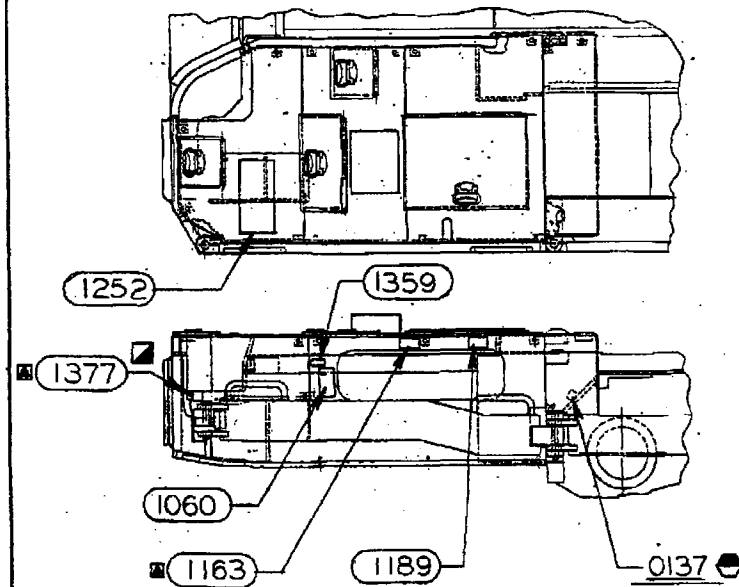
-----

Qty	UOM	Part Number	Description	Ref No
1	EA	01567337-0000	HOLDER, PLATE	430

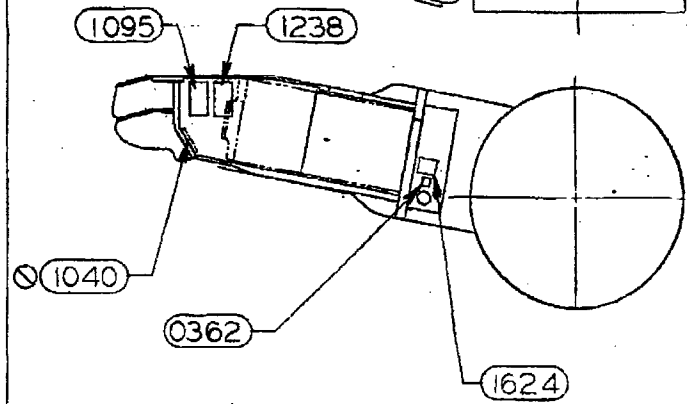
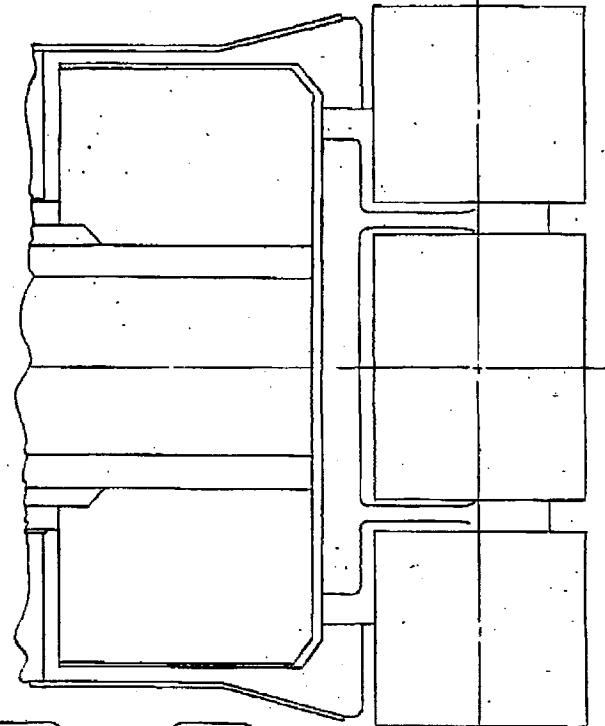
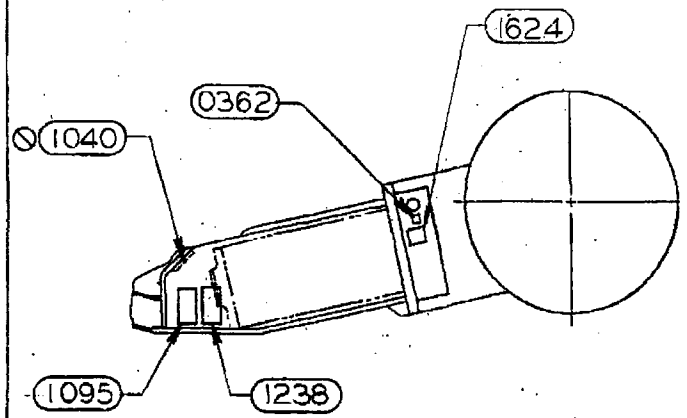
\*\*\*\*\* End of Bill of Material \*\*\*\*\*



REV. NO.		REV.	DESCRIPTION	DATE	APPROVED
SK025058-0012		2			
ZONE	REV	DESCRIPTION		DATE	APPROVED
	A	FDC0621		1-89	
	B	FDC2023		8-89	
	C	FDC5230		1-91	
	D	FDC6278		5-91	
	E	FDC7656		2-91	

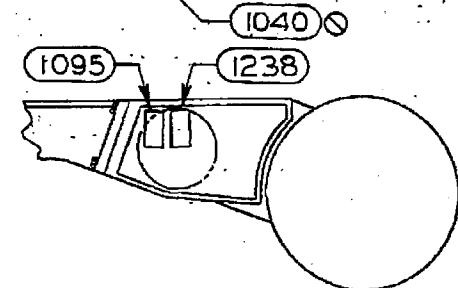
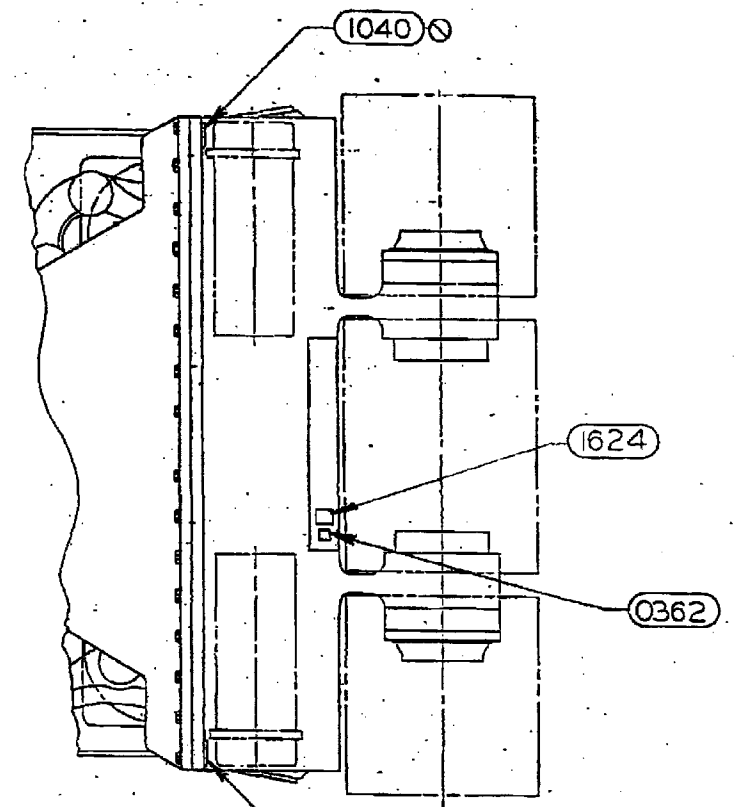
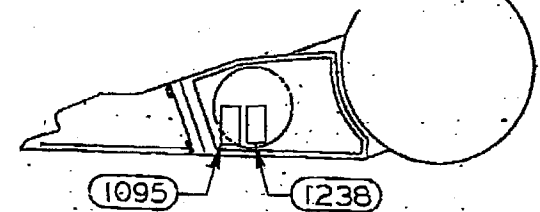


NAME PLATES FOR ENCLOSED PLATFORM



NAME PLATES FOR 44" DIA. SOLID HEAD

ALL WELDS MUST BE 70,000 MINIMUM TENSILE.



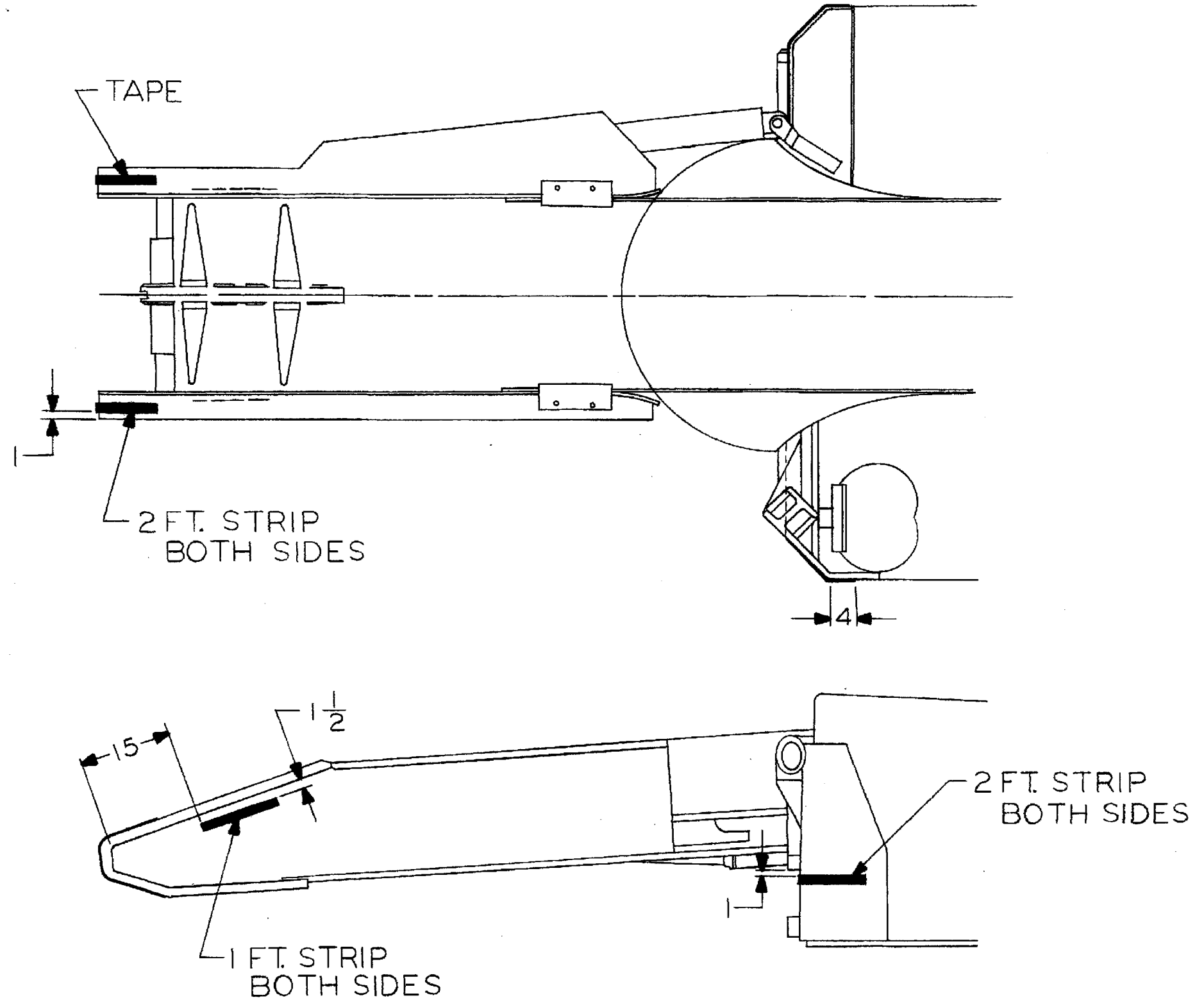
NAME PLATES FOR 36" DIA. SOLID HEAD

SEE SHEET 1 FOR NOTES & BM'S

MATERIAL		PATTERN NO.	
YES LITHO PRINT		CLASS 14CM	
HEAT TREAT		SIMILAR TO	
CARBURIZE (ECO)		JOY TECHNOLOGIES INC.	
HARDNESS		FRANKLIN, PENNA. 16323	
DRAFTER	DATE	NAME PLATE LOCATIONS 14CM9,10,12,15 DUAL CONV. DRIVE	
CHECKER	DATE		
ENGINEER	DATE		
APPROVAL:	DATE	SIZE	FRM. NO.
		D 75003	SK025058-0012 E
		SCALE	WGT.
			SHEET 2 OF 2

UNLESS OTHERWISE NOTED: ALL DIMENSIONS IN INCHES; MACHINING DIMENSIONS LIMITED TO FRACTIONAL 1/64, ANGULAR 1/2°; STRUCTURAL DIMENSIONS LIMITED TO 1/16. DO NOT SCALE THIS DRAWING.

"THIS DRAWING AND ALL INFORMATION THEREIN IS THE PROPERTY OF AND CONFIDENTIAL TO JOY TECHNOLOGIES INCORPORATED. IT MUST NOT BE MADE PUBLIC OR COPIED. IT IS LOANED SUBJECT TO RETURN UPON DEMAND. IT IS NOT TO BE USED DIRECTLY OR INDIRECTLY IN ANY WAY DETRIMENTAL TO THE INTERESTS OF JOY TECHNOLOGIES INCORPORATED."



(L)

<b>JOY MANUFACTURING CO.</b>		<b>REFLECTIVE TAPE LOCATION</b>	
PLANT LOCATION AS INDICATED BELOW			
BUFFALO, N. Y.	NEW PHILADELPHIA, O.	SIMILAR TO	DR. J. CORNOR
CLAREMONT, N. H.		SUPERSEDED BY	TR. 12-9-71
FRANKLIN, PA.		SUPERSEDED BY	CK.
SALT, ONTARIO, CAN.		REPLACED BY	APFD.
GREENOCK, SCOTLAND			
INDIANAPOLIS, IND.			
		SCALE	CLASS 10
		JCM 736	