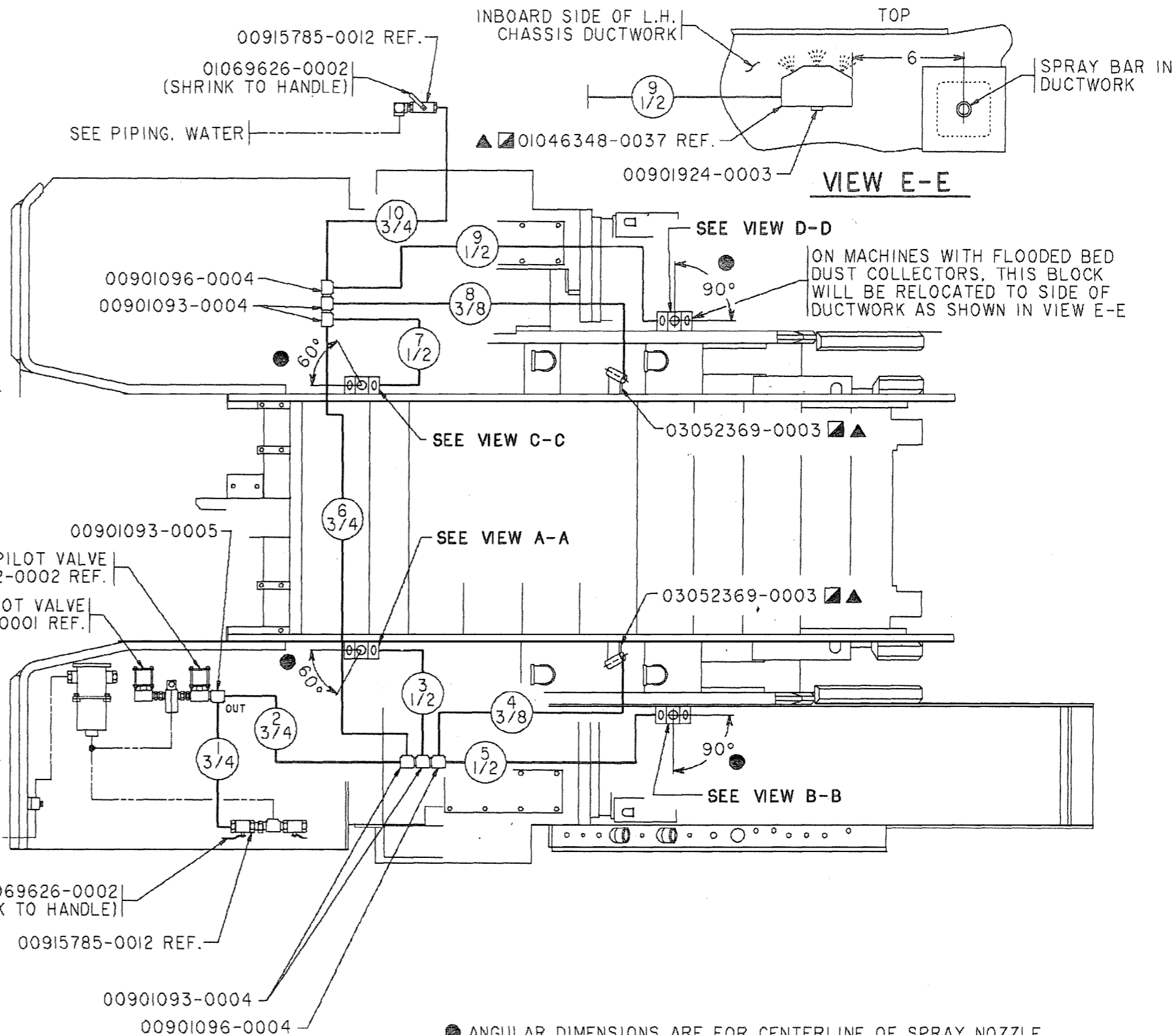
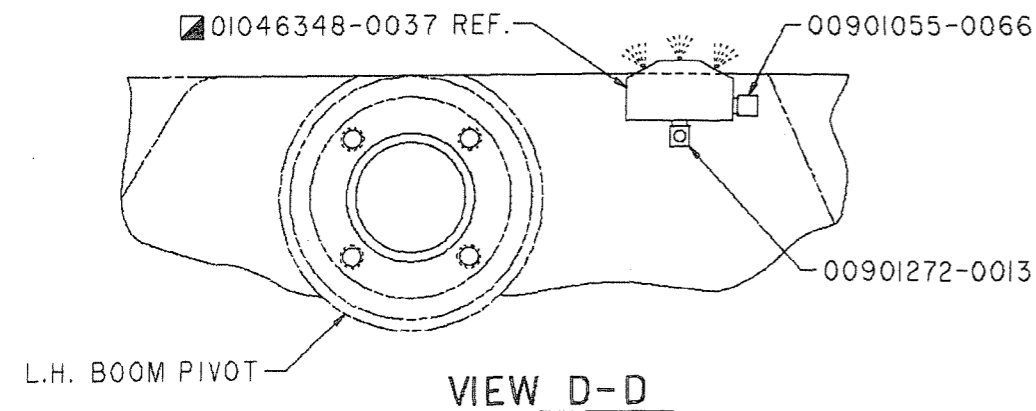
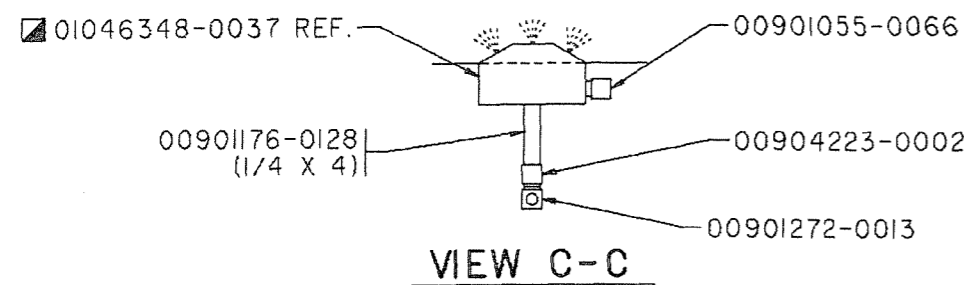
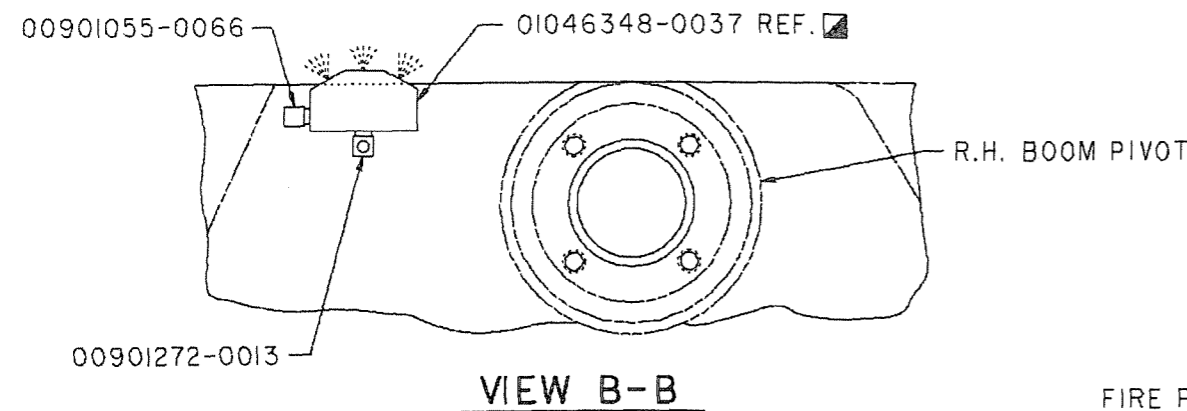
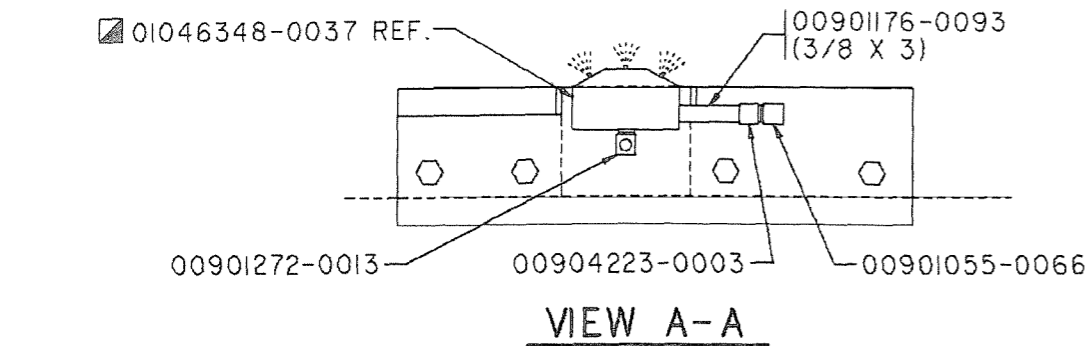


B/M Number	Description	Reference	Date	Sheet
00720473-0107	PIPING, FIRE SUPPRESSION	PD005009-0058 FDF1827	10/08/1996	01

Qty	UOM	Part Number	Description	Ref No
4	EA	00901055-0066	ELBOW, STREET, SHORT, 3/8 NPTF	10
1	EA	00901088-0012	TEE, 3/4 NPTF	20
4	EA	00901093-0004	TEE, SERVICE, 3/4 NPTF	30
1	EA	00901093-0005	TEE, SERVICE, 1 NPTF	40
2	EA	00901096-0004	TEE, 3/4 NPTF	50
2	EA	00901158-0008	BUSHING, 3/4 NPT X 3/8 NPT	60
1	EA	00901176-0093	NIPPLE, XS, 3/8 X 3 LG	70
1	EA	00901176-0128	NIPPLE, XS, 1/4 X 4 LG	80
4	EA	00901272-0013	elbow, 90 x 1/4 nptf x 1/4 nptf	90
1	EA	00901924-0003	PLUG, HEX SOC, 1/4" NPT	100
1	EA	00904223-0002	COUPLING, 1/4 NPTF	110
1	EA	00904223-0003	COUPLING, 3/8 NPTF	120
1	EA	00906426-0012	ELBOW, 90 X 3/4 NPTF X 3/4 NPTF	130
2	EA	00907234-0086	ADAPTER, 1/2 T X 3/8 NPTF	140
4	EA	00907234-0812	ADAPTER, 1/2 T X 3/4 NPTF	150
6	EA	00907234-1212	ADAPTOR,STR,3/4"NPT,M,1-1/16"JIC,M	160
1	EA	00907234-1216	ADAPTER,3/4 T X 1 NPTF	170
2	EA	00907254-0064	ELBOW, 90 X 3/8 T X 1/4 NPTF	180
2	EA	00907254-0066	ELBOW, 90 X 3/8 T X 3/8 NPTF	190
4	EA	00907254-0086	ELBOW, 90 X 1/2 T X 3/8 NPTF	200
3	EA	00907254-0812	ELBOW, 90 X 1/2 T X 3/4 NPTF	210
2	EA	00907254-1212	ELBOW, 90 X 3/4 T X 3/4 NPTF	220
1	EA	00907254-1216	ELBOW, 90 X 3/4 T X 1 NPTF	230
2	EA	00926906-0060	HOSE, ASSEMBLED, #6, JIC, CRIMP, DWB	240
1	EA	00926908-0024	HOSE, ASSEMBLED, #8, JIC, CRIMP, CMP	250
2	EA	00926908-0048	HOSE, ASSEMBLED, #8, JIC, CRIMP, DWB	260
4	EA	00926908-0072	HOSE, ASSEMBLED, #8, JIC, CRIMP, DWB	270
1	EA	00926912-0036	HOSE, ASSEMBLED, #12, JIC, CRIMP, DWB	280
2	EA	00926912-0048	HOSE, ASSEMBLED, #12, JIC, CRIMP, DWB	290
1	EA	00926912-0084	HOSE, ASSEMBLED, #12, JIC, CRIMP, DWB	300
2	EA	01069626-0002	TUBE, INSULATING	310
18	EA	01566237-0000	NOZZLE, SPRAY	320
2	EA	03052369-0003	SPRAY, WATER	330

***** End of Bill of Material *****

8900-600500d



- ANGULAR DIMENSIONS ARE FOR CENTERLINE OF SPRAY NOZZLE ON BOTTOM OF BLOCK.
- ALL FIRE SPRAYS USE 01566237-0000 NOZZLE (18 TOTAL REQUIRED).
- ▲ LOCATE AND WELD - ALL WELDS MUST BE 70,000 P.S.I. MINIMUM TENSILE.

ENG. ORDER (A) FDF0800		REVISIONS		FINISH SYMBOLS		JOY TECHNOLOGIES INC. FRANKLIN, PENNSYLVANIA 16323		PIPING, FIRE SUPPRESSION	
CAD-CAM DRAWING MANUAL REVISIONS NOT AUTHORIZED. UNLESS OTHERWISE NOTED, ALL DIMENSIONS IN INCHES. MACHINING DIMENSIONS LIMITED TO: FRACTIONAL 1/64, ANGULAR 1/2°. STRUCTURAL DIMENSIONS LIMITED TO 1/16. DO NOT SCALE THIS DRAWING.				MATERIAL		DESCRIPTION		THIS DRAWING AND ALL INFORMATION THEREIN IS THE PROPERTY OF AND CONFIDENTIAL TO JOY TECHNOLOGIES INC. IT MUST NOT BE MADE PUBLIC OR COPIED. IT IS LOANED SUBJECT TO RETURN UPON DEMAND. IS NOT TO BE USED DIRECTLY OR INDIRECTLY IN ANY WAY DETRIMENTAL TO OUR INTEREST.	
HEAT TREAT		PATTERN NO		LITHOPRINT YES <input checked="" type="checkbox"/> NO <input type="checkbox"/>		DESCRIPTION		SIMILAR TO PD005009-0027 REPLACES _____ REPLACED BY _____	
HARDNESS		CARBURIZE (ECD)		MICRO INCHES		MICRO INCHES		DR. R. JOLLEY DATE 09-06-96 CLASS 12CM/2 SCALE NONE	
A 4 PRECISION POLISH		B 8 FINE POLISH		C 16 COMMON POLISH		D 32 GRIND OR EQUAL		E 63 SMOOTH MACHINE	
F 125 COMMON MACHINE		G 250 ROUGH MACHINE		H 500 HEAVY ROUGH		K 1000 EX HEAVY ROUGH		PD005009-0058	