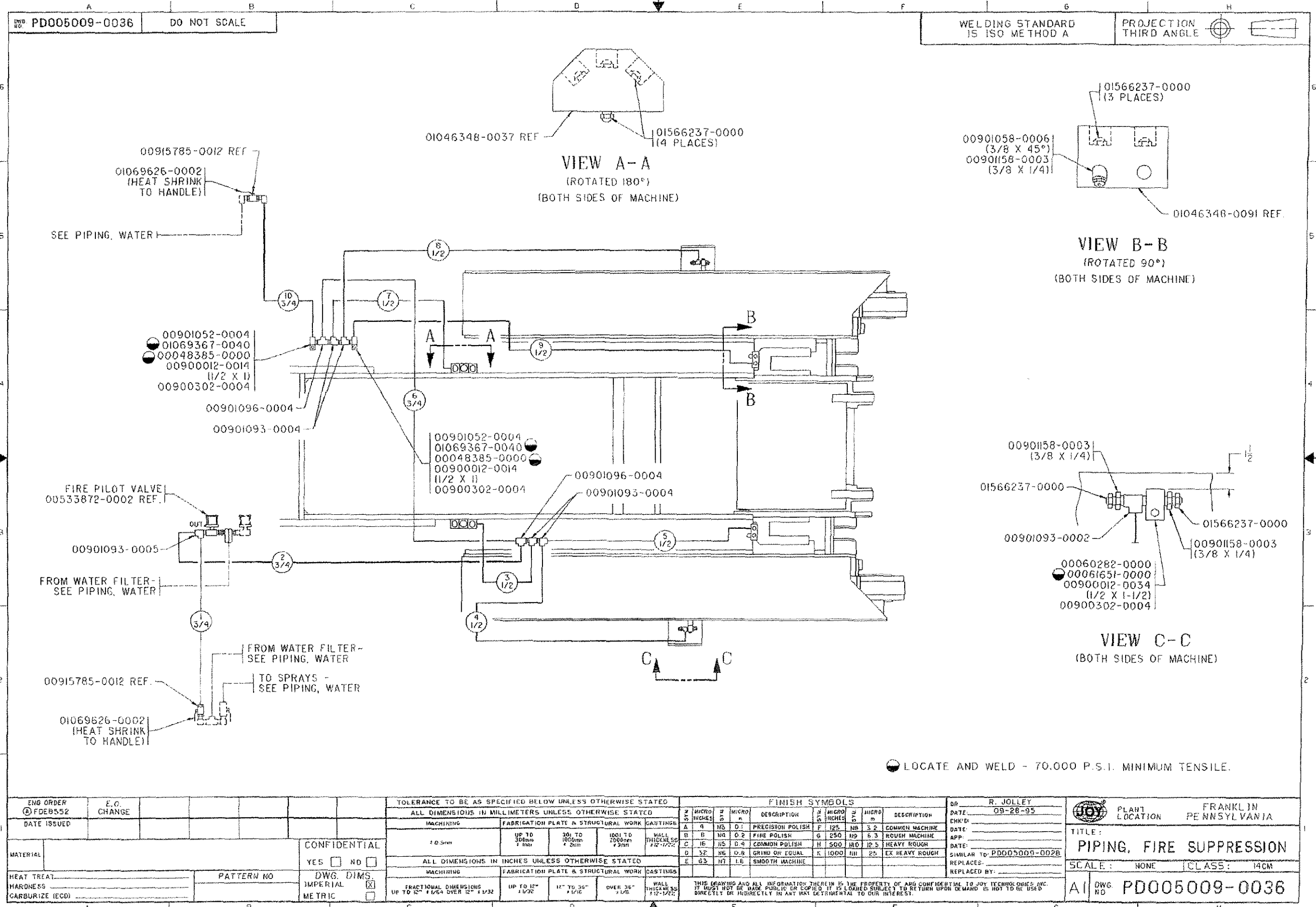


B/M NUMBER	DESCRIPTION	INCHES	REFERENCE	DATE
00720473 0094	PIPING, FIRE SUPPRESSION		PD005009 0036 01 PDF0759	05/31/96

QTY	G/P	PART NUMBER	DESCRIPTION	REF NO
2		00048385 0000	BLOCK	
2	*	00060282 0000	COUPLING	
2	*	00061651 0000	BOSS	
2		00900012 0014	SCREW, CAP, GR. 5, 1/2-13 X 1	
2		00900012 0034	SCREW, CAP, GR. 5, 1/2-13 X 1-1/2	
4		00900302 0004	WASHER, LOCK, 1/2	
6		00900716 0017	ADAPTER, 3/4 NPTF X 3/4 MPT	
2		00900716 0027	ADAPTER, 3/8 NPTF X 1/2 MPT	
4		00900716 0029	ADAPTER, 3/4 NPTF X 1/2 MPT	
2		00901052 0004	ELBOW, STREET, 90 X 3/4 NPTF X 3/4 NPTF	
2		00901055 0066	ELBOW, STREET, SHORT, 3/8 NPTF	
2		00901058 0006	ELBOW, STREET, 45 X 3/8 NPTF	
2		00901093 0002	TEE, SERVICE, 3/8 NPTF	
4		00901093 0004	TEE, SERVICE, 3/4 NPTF	
1		00901093 0005	TEE, SERVICE, 1 NPTF	
2		00901096 0004	TEE, 3/4 NPTF	
6		00901158 0003	BUSHING, 3/8 NPT X 1/4 NPT	
2		00903686 0007	ELBOW, 90 X 3/4 NPTF X 1/2 MPT	
1		00903686 0008	ELBOW, 90 X 3/4 NPTF X 3/4 MPT	
4		00903686 0068	ELBOW, 90 X 3/8 NPTF X 1/2 MPT	
1		00903686 1612	ELBOW, 90 X 1 NPTF X 3/4 MPT	
1		00914508 0024	HOSE, ASSEMBLED, #8, MPT, CRIMP, DWB	
1		00914508 0032	HOSE, ASSEMBLED, #8, MPT, CRIMP, DWB	
1		00914508 0072	HOSE, ASSEMBLED, #8, MPT, CRIMP, DWB	
3		00914508 0096	HOSE, ASSEMBLED, #8, MPT, CRIMP, DWB	
2		00914512 0048	HOSE, ASSEMBLED, #12, MPT, CRIMP, DWB	
1		00914512 0084	HOSE, ASSEMBLED, #12, MPT, CRIMP, DWB	
1		00914512 0096	HOSE, ASSEMBLED, #12, MPT, CRIMP, DWB	
2		01069367 0040	KEEPER	
2	*	01069626 0002	TUBE, INSULATING	
18		01566237 0000	NOZZLE, SPRAY	

***** END OF B/M PRINT *****



PD005009-0036 DO NOT SCALE

WELDING STANDARD IS ISO METHOD A
PROJECTION THIRD ANGLE

VIEW A-A
(ROTATED 180°)
(BOTH SIDES OF MACHINE)

VIEW B-B
(ROTATED 90°)
(BOTH SIDES OF MACHINE)

VIEW C-C
(BOTH SIDES OF MACHINE)

LOCATE AND WELD - 70,000 P.S.I. MINIMUM TENSILE.

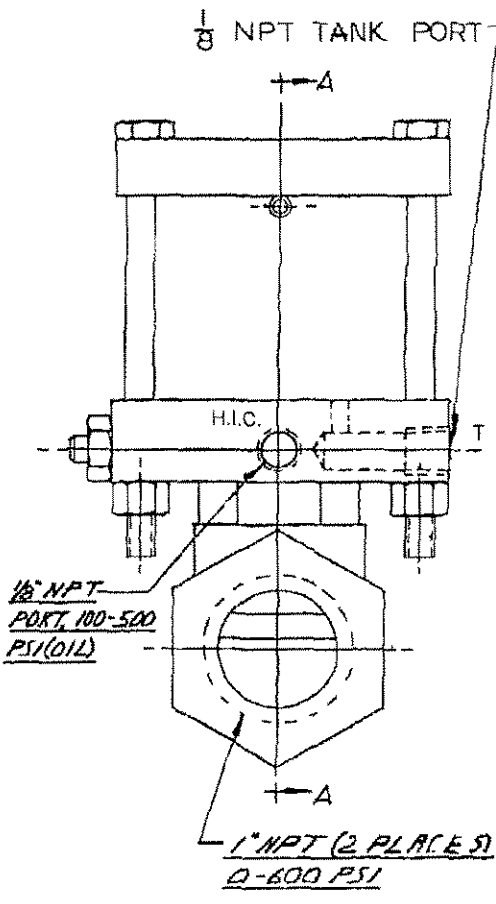
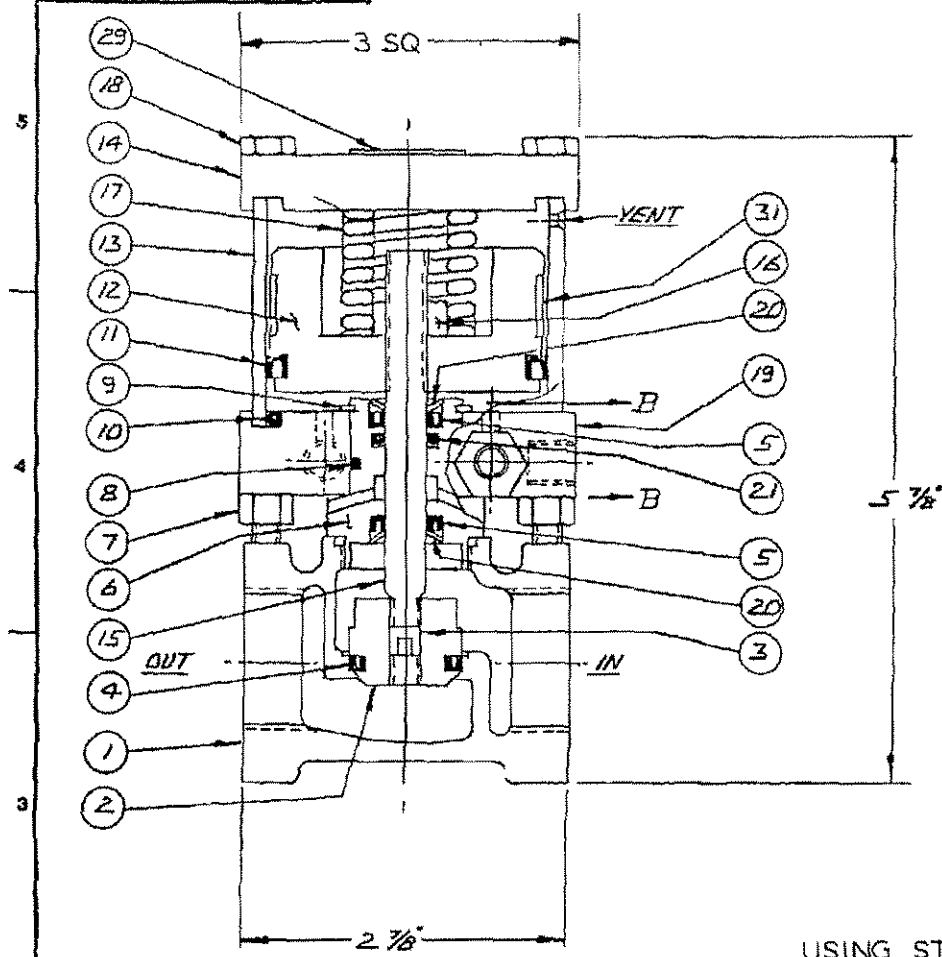
ENG ORDER ① FDEB552	E.O. CHANGE	TOLERANCE TO BE AS SPECIFIED BELOW UNLESS OTHERWISE STATED				FINISH SYMBOLS				DR R. JOLLEY	FRANKLIN PENNSYLVANIA																				
DATE ISSUED		ALL DIMENSIONS IN MILLIMETERS UNLESS OTHERWISE STATED				ALL DIMENSIONS IN INCHES UNLESS OTHERWISE STATED				DATE 09-28-95																					
		MACHINING	FABRICATION PLATE & STRUCTURAL WORK	CASTINGS		A	B	C	D	E	F	G	H	I	J	K	L	M	N	O	P	Q	R	S	T	U	V	W	X	Y	Z
		± 0.5mm	UP TO 30mm ± 0.2mm	30 TO 100mm ± 0.2mm	100 TO 1000mm ± 0.2mm	1/8"	1/16"	1/32"	1/64"	1/32"	1/64"	1/32"	1/64"	1/32"	1/64"	1/32"	1/64"	1/32"	1/64"	1/32"	1/64"	1/32"	1/64"	1/32"	1/64"	1/32"	1/64"	1/32"	1/64"	1/32"	1/64"
		ALL DIMENSIONS IN INCHES UNLESS OTHERWISE STATED				FRACTIONAL DIMENSIONS				WALL THICKNESS				THIS DRAWING AND ALL INFORMATION THEREIN IS THE PROPERTY OF JOY TECHNOLOGIES INC. IT MUST NOT BE MADE PUBLIC OR COPIED. IT IS LOANED SUBJECT TO RETURN UPON DEMAND. IS NOT TO BE USED DIRECTLY OR INDIRECTLY IN ANY WAY CONTRADICTORY TO OUR INTERESTS.																	
		MACHINING				FABRICATION PLATE & STRUCTURAL WORK				CASTINGS				REPLACES BY:				TITLE: PIPING, FIRE SUPPRESSION													
														SCALE: NONE CLASS: 14CM																	
		CONFIDENTIAL YES <input type="checkbox"/> NO <input type="checkbox"/>												SIMILAR TO: PD005009-0028				DWG NO: PD005009-0036													
		HEAT TREAT				PATTERN NO								REPLACES BY:																	
		HARDNESS				DWG DIMS IMPERIAL <input checked="" type="checkbox"/> METRIC <input type="checkbox"/>																									
		CARBURIZE (ECD)																													

B/M NUMBER	DESCRIPTION	INCHES	REFERENCE	DATE
00533872 0002	VALVE, WATER, 2-WAY		00533872 0002 01	
	REPLACES	REPLC BY	FDE0260	05/03/93
	REPLACES00533872 0008REPLC BY			
	BILL OF MATERIAL FOR REPAIR REFERENCE			
	(ITEMS 23 AND 24 ARE SUPPLIED ONLY			
	IN PIN ASSEMBLY 03069434 0350 ITEM			
	NO. 22)			

QTY	G/P	PART NUMBER	DESCRIPTION	REF NO
4		00900042 0111	SCREW, CAP, GR. 8, 1/4-20 X 3-1/2	18
4		00900149 0003	NUT, HEX, JAM, 1/4-20	7
1		00900149 0026	NUT, HEX, JAM, 3/8-24	16
1		00900572 0005	BALL, GR. 50, 1/4	26
1		00901204 0002	PLUG, SQ. HD., 1/4 NPT	29
2		00902095 0025	RING, RETAINING	20
1		00902095 0100	RING, RETAINING	9
1		00905987 0048	SPRING, DIE	17
1		00906201 0048	SCREW, SET, 5/16-24 X 3/8	28
1		00910660 0020	O-RING	8
1		00910660 0110	O-RING	21
1		00910660 0228	O-RING	10
1		01069600 0275	STRIP, WEAR	31
1		01069857 0031	PISTON	12
2		01565750 0016	PISTON	5
1		01565750 0017	GLAND	6
1		01565750 0020	TUBE	13
1		01565750 0021	COVER, BLIND END	14
1		01565750 0022	ROD, PISTON	15
1		01565750 0023	COVER, ROD END	19
1		01565750 0026	SPRING	25
1		01565750 0027	SPRING	27
1		01565750 0053	POPPET	2
1		01565750 0054	SCREW, SET	3
1		01565750 0055	U-CUP	4
1		01565750 0056	BODY	1
1		01565750 0057	PISTON, PACKING	11
1		03069434 0350	PIN, SPECIAL	22

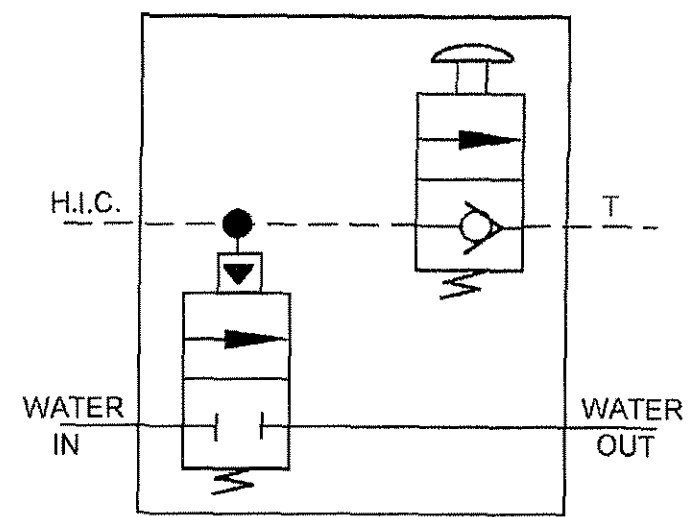
***** END OF B/M PRINT *****

2000-72-0002

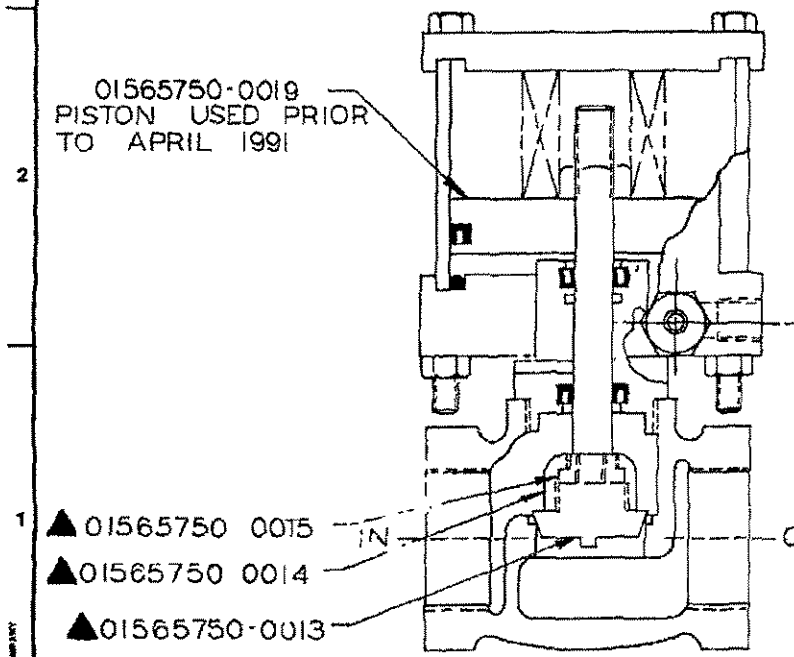


▲ THESE PARTS USED PRIOR TO SEPT 1987

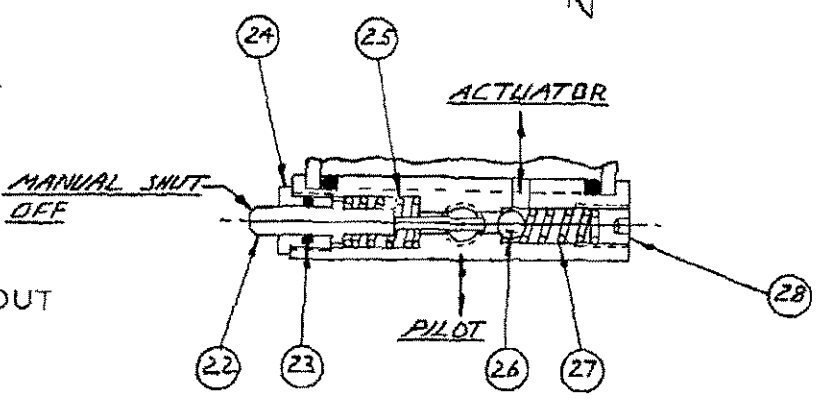
ITEMS 23 & 24 ARE SUPPLIED ONLY IN PIN ASSEMBLY 03069434-0350, ITEM 22



SCHEMATIC SYMBOL



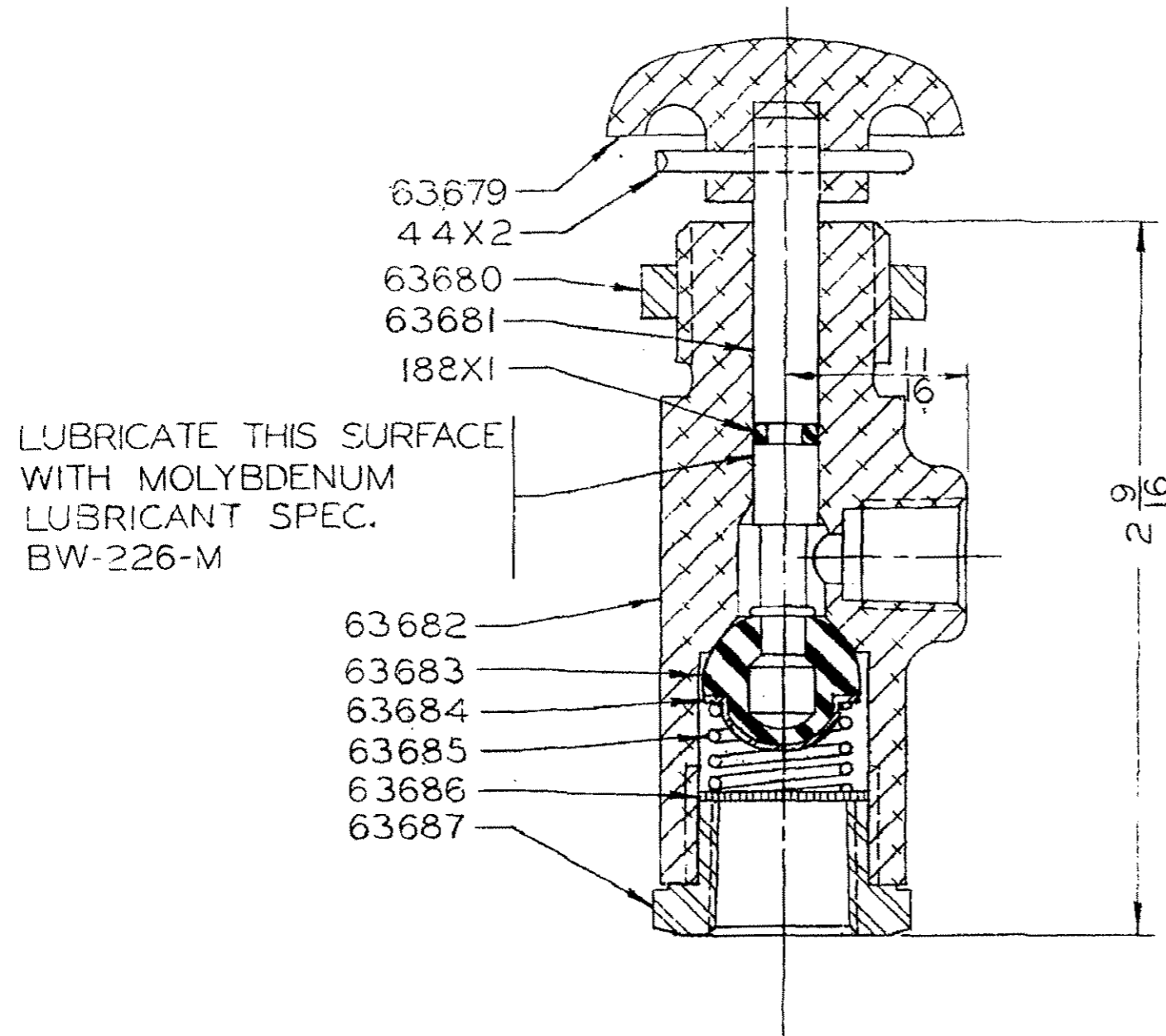
USING STRAIGHT EDGE INSTALL PISTON ON PISTON ROD UNTIL ROD IS FLUSH WITH OR SLIGHTLY BELOW THE TOP OF THE PISTON



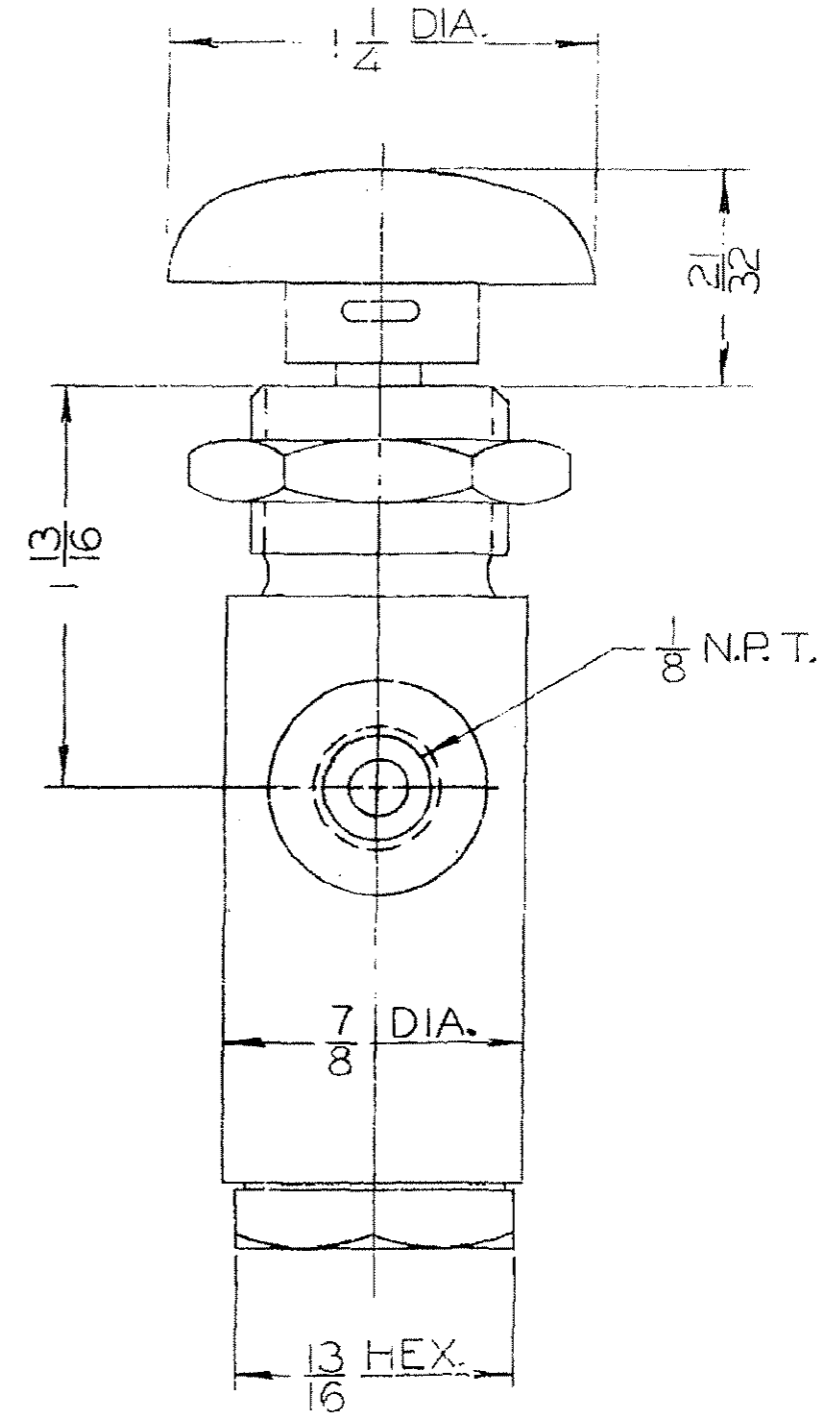
- ▲ 01565750 0015
- ▲ 01565750 0014
- ▲ 01565750-0013

ENG ORDER FBQ0366		REVISIONS FCE090E FDC018 FDC342 FDC567 FDE0260 (M) FDF5974 (N) FDF6945		FINISH SYMBOLS A 4 PRECISION POLISH F 125 COMMON MACHINE B 8 FINE POLISH C 250 ROY OR MACHINE C 18 COMMON POLISH H 500 HEAVY ROUGH D 32 GRIND OR EQUAL K 1000 EX HEAVY ROUGH E 63 SMOOTH MACHINE		JOY TECHNOLOGIES INC. FRANKLIN PENNSYLVANIA 18323		VALVE, WATER, 2 WAY	
MATERIAL HEAT TREAT HARDNESS CARBUHIDE (ECP)		PATTERN NO LITHOPRINT YES <input type="checkbox"/> NO <input type="checkbox"/>		THIS DRAWING AND ALL INFORMATION THEREON IS THE PROPERTY OF AND CONFIDENTIAL TO JOY TECHNOLOGIES INC. IT MUST NOT BE MADE PUBLIC OR COPIED. IT IS LOANED SUBJECT TO RETURN UPON DEMAND AND IS NOT TO BE USED DIRECTLY OR INDIRECTLY IN ANY WAY DETRIMENTAL TO OUR INTEREST.		SIMILAR TO <u>0008</u> REPLACES _____ REPLACED BY _____		DR <u>L. MILLER</u> DATE <u>05-90</u> CLASS _____ SCALE _____	
UNLESS OTHERWISE NOTED DIMENSIONS ARE IN INCHES. DIMENSIONS LIMITED TO FRACTIONAL 1/8, 1/4, 3/8, 1/2, 5/8, 3/4, 1, 1 1/4, 1 1/2, 1 3/4, 2, 2 1/4, 2 1/2, 3, 3 1/4, 3 1/2, 4, 4 1/4, 4 1/2, 5, 5 1/4, 5 1/2, 6, 6 1/4, 6 1/2, 7, 7 1/4, 7 1/2, 8, 8 1/4, 8 1/2, 9, 9 1/4, 9 1/2, 10.		SCALE THIS DRAWING		00533872-0002					

A63608



LUBRICATE THIS SURFACE
WITH MOLYBDENUM
LUBRICANT SPEC.
BW-226-M



CONFIDENTIAL

THIS DRAWING IS THE PROPERTY OF JOY MANUFACTURING COMPANY. THE INFORMATION CONTAINED HEREON IS CONFIDENTIAL AND MAY NOT BE COPIED OR MADE PUBLIC, IN WHOLE OR IN PART, AND MUST BE RETURNED UPON REQUEST.

JOY MANUFACTURING CO.	
PLANT LOCATION AS INDICATED BELOW	
CLAREMONT, N. H.	NEW PHILADELPHIA, O.
DALLAS, TEXAS	ST. LOUIS, MISSOURI
FRANKLIN, PA.	X
GALT, ONTARIO, CANADA	
GREENOCK, SCOTLAND	
RICHMAN CITY, IND.	

CONTROL VALVE

SIMILAR TO _____
SUPERSEDED BY _____
REPLACES _____
REPLACED BY _____

DR. HLD. 11-6-59
TR. _____
CK. _____
APPVD. _____

SCALE *2* CLASS _____
A63608

ENG. ORDER *AMR00* REVISIONS _____
DATE ISSUED _____