

B/M Number	Description	Reference	Date	Sheet
00507335-2114	FRAME, SUPPORT	1003722	04/05/1999	

Qty	UOM	Part Number	Description	Ref No
4	EA	00902224-0051	SCREW, CAP, 1/2-13 X 3/4	1
6	EA	00902224-0819	SCREW, CAP, 5/8-11 X 1-1/4	2
1	EA	01063383-0038	DETAIL	3
1	EA	01069119-0674	BRACKET, ANGLE	4
1	EA	01069119-0675	BRACKET, ANGLE	5
1	EA	01069500-2037	RUNNER	6
1	EA	01069500-2038	RUNNER	7
1	EA	01069500-2039	RUNNER	8
2	EA	01069500-2040	RUNNER	9
2	EA	01069500-2041	RUNNER	10
2	EA	01069500-2068	RUNNER	11
2	EA	01069629-0146	TUBE SPECIAL	12
1	EA	01561129-0027	DETAIL	13
10	EA	01564265-0331	DETAIL	14
1	EA	01564265-0438	DETAIL	15
3	EA	01564265-0447	DETAIL	16
1	EA	01564265-0449	DETAIL	17
1	EA	01564265-0463	DETAIL	18
1	EA	01564265-0475	DETAIL	19
1	EA	01564265-0882	DETAIL	20
1	EA	01564265-0883	DETAIL	21
2	EA	01564265-0884	DETAIL	22
1	EA	01564265-0885	DETAIL	23
4	EA	01564265-0886	DETAIL	24
4	EA	01564265-0891	DETAIL	25
1	EA	01564265-0914	DETAIL	26
1	EA	01564265-1107	DETAIL	27
3	EA	01564265-1108	DETAIL	28
2	EA	01564265-1116	DETAIL	29
1	EA	01564265-1127	DETAIL	30
1	EA	01564265-1580	DETAIL	31
1	EA	01564265-1582	DETAIL	32
1	EA	01564265-1586	DETAIL	33
1	EA	01564265-1609	DETAIL	34
1	EA	01564265-1610	DETAIL	35
1	EA	01564265-1760	DETAIL	36
1	EA	01564265-1761	DETAIL	37
1	EA	01564265-2597	DETAIL	38
1	EA	01564265-2598	DETAIL	39
1	EA	01564265-3162	DETAIL	40
4	EA	01564265-3280	DETAIL	41
1	EA	01564265-3281	DETAIL	42
1	EA	01564265-3282	DETAIL	43
2	EA	01564265-3283	DETAIL	44

B/M Number	Description	Reference	Date	Sheet
00507335-2114	FRAME, SUPPORT			

Qty	UOM	Part Number	Description	Ref No
1	EA	01564265-3284	DETAIL	45
1	EA	01564265-3285	DETAIL	46
2	EA	01564265-3286	DETAIL	47
1	EA	01564265-3287	DETAIL	48
2	EA	01564265-3288	DETAIL	49
2	EA	01564265-3291	DETAIL	50
2	EA	01564265-3292	DETAIL	51
1	EA	01564265-3293	DETAIL	52
1	EA	01564265-3294	DETAIL	53
1	EA	01564265-3295	DETAIL	54
1	EA	01564265-3296	DETAIL	55
2	EA	01564265-3299	DETAIL	56
1	EA	01564265-3300	DETAIL	57
1	EA	01564265-3397	DETAIL	58
1	EA	01564265-3494	DETAIL	59
1	EA	01564265-3495	DETAIL	60
1	EA	01564265-3521	DETAIL	61
1	EA	01564265-3522	DETAIL	62
1	EA	01564265-3876	PLATE, CONVEYOR	63
1	EA	01564265-3877	PLATE, CONVEYOR	64
1	EA	01564265-3878	PLATE, CONVEYOR	65
1	EA	01564265-3879	PLATE, CONVEYOR	66
1	EA	01564265-3880	PLATE, CONVEYOR	67
1	EA	01564265-3881	PLATE, CONVEYOR	68
1	EA	01564265-3882	PLATE, CONVEYOR	69
1	EA	01564265-3889	PLATE, CONVEYOR	70
1	EA	01564265-3908	PLATE, CONVEYOR	71
1	EA	01564265-3909	PLATE, CONVEYOR	72
1	EA	01564265-3910	PLATE, CONVEYOR	73
1	EA	01564265-3911	PLATE, CONVEYOR	74
2	EA	01564265-3912	PLATE, CONVEYOR	75
1	EA	01564265-3913	PLATE, CONVEYOR	76
1	EA	01565979-0542	DETAIL	77
2	EA	01565979-0543	DETAIL	78
2	EA	01565979-0544	DETAIL	79
1	EA	03061761-0006	PLATE	80
1	EA	03069118-0501	BRACKET	81
36	KG	00806135-0000	SAND, P60, 50 POUND POLYWOVEN BAG	82

***** End of Bill of Material *****

B/M Number	Description	Reference	Date	Sheet
100011097	SIDEBOARDS, FRAME, SUPPORT	1007893	09/15/1999	

Qty	UOM	Part Number	Description	Ref No
2	EA	01564265-3872	PLATE, CONVEYOR	10
2	EA	100031698	PLATE,DETAIL	20
2	EA	100031699	PLATE,DETAIL	30

***** End of Bill of Material *****

B/M Number	Description	Reference	Date	Sheet
00507090-2090	FRAME, CONVEYOR	1007992	09/16/1999	

Qty	UOM	Part Number	Description	Ref No
1	EA	00061799-0000	SHIM	1
1	EA	00570425-0015	HANGER, CABLE	2
4	EA	00900947-0084	KEY, 3/8 X 3/8 X 1-1/2	3
2	EA	00900947-0481	KEY, 1/4 X 1/4 X 4	4
4	EA	00916893-0004	RING. HO	5
6	EA	00925271-1225	PIN, SPRING, 10 X 10 X 65	6
16	EA	00925435-1200	NUT, HEX, STYLE 2, CL. 12, M12 X 1.75	7
4	EA	00925435-2000	NUT, HEX, STYLE 2, CL. 12, M20 X 2.5	8
12	EA	00925441-1626	SCREW, CAP, CL. 10.9, M16 X 2 X 60	9
4	EA	00925441-2026	SCREW, CAP, CL. 10.9, M20 X 2.5 X 60	10
5	EA	00925441-2426	SCREW, CAP, CL. 10.9, M24 X 3 X 60	11
8	EA	00925447-1224	SCREW, CAP, CL. 12.9, M12 X 1.75 X 50	12
8	EA	00925447-1228	SCREW, CAP, CL. 12.9, M12 X 1.75 X 70	13
5	EA	00925498-2400	WASHER, FLAT, GR. A, CLASS 300HV, M24	14
1	EA	01564265-0030	DETAIL	15
6	EA	01564265-0331	DETAIL	16
1	EA	01564265-1152	DETAIL	17
4	EA	01564265-1153	DETAIL	18
2	EA	01564265-1193	DETAIL	19
2	EA	01564265-1229	DETAIL	20
1	EA	01564265-1533	DETAIL	21
2	EA	01564265-1534	DETAIL	22
1	EA	01564265-1537	DETAIL	23
3	EA	01564265-1541	DETAIL	24
1	EA	01564265-1542	DETAIL	25
1	EA	01564265-1546	DETAIL	26
2	EA	01564265-1547	DETAIL	27
2	EA	01564265-1548	DETAIL	28
1	EA	01564265-1549	DETAIL	29
1	EA	01564265-1550	DETAIL	30
2	EA	01564265-3713	PLATE, CONVEYOR	31
1	EA	01564265-3723	PLATE, CONVEYOR	32
2	EA	01564265-3932	PLATE, CONVEYOR	33
1	EA	01564265-3933	PLATE, CONVEYOR	34
1	EA	01564265-3934	PLATE, CONVEYOR	35
1	EA	01564265-3935	PLATE, CONVEYOR	36
1	EA	01564265-3936	PLATE, CONVEYOR	37
1	EA	01564265-4045	PLATE, CONVEYOR	38
1	EA	01564265-4046	PLATE, CONVEYOR	39
1	EA	01564265-4047	PLATE, CONVEYOR	40
1	EA	01564265-4048	PLATE, CONVEYOR	41
1	EA	01564265-4049	PLATE, CONVEYOR	42
1	EA	01564265-4050	PLATE, CONVEYOR	43
1	EA	01564265-4051	PLATE, CONVEYOR	44

B/M Number	Description	Reference	Date	Sheet
00507090-2090	FRAME, CONVEYOR			

Qty	UOM	Part Number	Description	Ref No
1	EA	01564265-4052	PLATE, CONVEYOR	45
1	EA	01564265-4053	PLATE, CONVEYOR	46
1	EA	01564265-4054	PLATE, CONVEYOR	47
2	EA	01564265-4055	PLATE, CONVEYOR	48
1	EA	01564265-4056	PLATE, CONVEYOR	49
1	EA	01564265-4057	PLATE, CONVEYOR	50
2	EA	01564265-4058	PLATE, CONVEYOR	51
1	EA	01564265-4059	PLATE, CONVEYOR	52
1	EA	01564265-4060	PLATE, CONVEYOR	53
1	EA	01564265-4061	PLATE, CONVEYOR	54
1	EA	01564265-4062	PLATE, CONVEYOR	55
1	EA	01564265-4063	PLATE, CONVEYOR	56
1	EA	01564265-4066	PLATE, CONVEYOR	57
1	EA	03069196-1896	COVER	58
1	EA	03069296-0026	GUIDE	59
1	EA	03069296-0093	GUIDE	60
1	EA	03069296-0094	GUIDE	61
1	EA	03069865-0013	PIVOT	62
1	EA	00810847-0000	ADHESIVE, REMOVABLE THREADLOCKER	70
19	KG	00806135-0000	SAND, P60, 50 POUND POLYWOVEN BAG	71

***** End of Bill of Material *****

B/M Number	Description	Reference	Date	Sheet
00483004-0057	SIDEBOARDS, FRAME, CONVEYOR	SK025382-0037 FDF7900	08/14/1998	01

Qty	UOM	Part Number	Description	Ref No
10	EA	00925435-1600	NUT, HEX, STYLE 2, CL. 12, M16 X 2	10
10	EA	00925441-1624	SCREW, CAP, CL. 10.9, M16 X 2 X 50	20
10	EA	00925498-1600	WASHER, FLAT, GR. A, CLASS 300HV, M16	30
2	EA	01069296-0023	GUIDE	40
4	EA	01564265-3277	DETAIL	50
2	EA	01564265-3389	DETAIL	60

***** End of Bill of Material *****

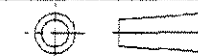
SK025382-0037

DO NOT SCALE

☒ PARTS INCLUDED ON P/N 00720508-0181 CONVEYOR SHIM CHANGE-OUT KIT

WELDING STANDARD IS ISO METHOD A

PROJECTION THIRD ANGLE

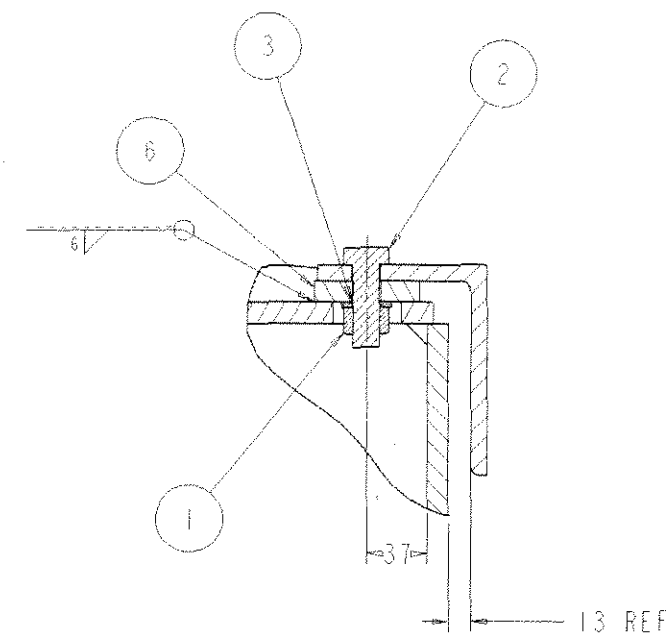
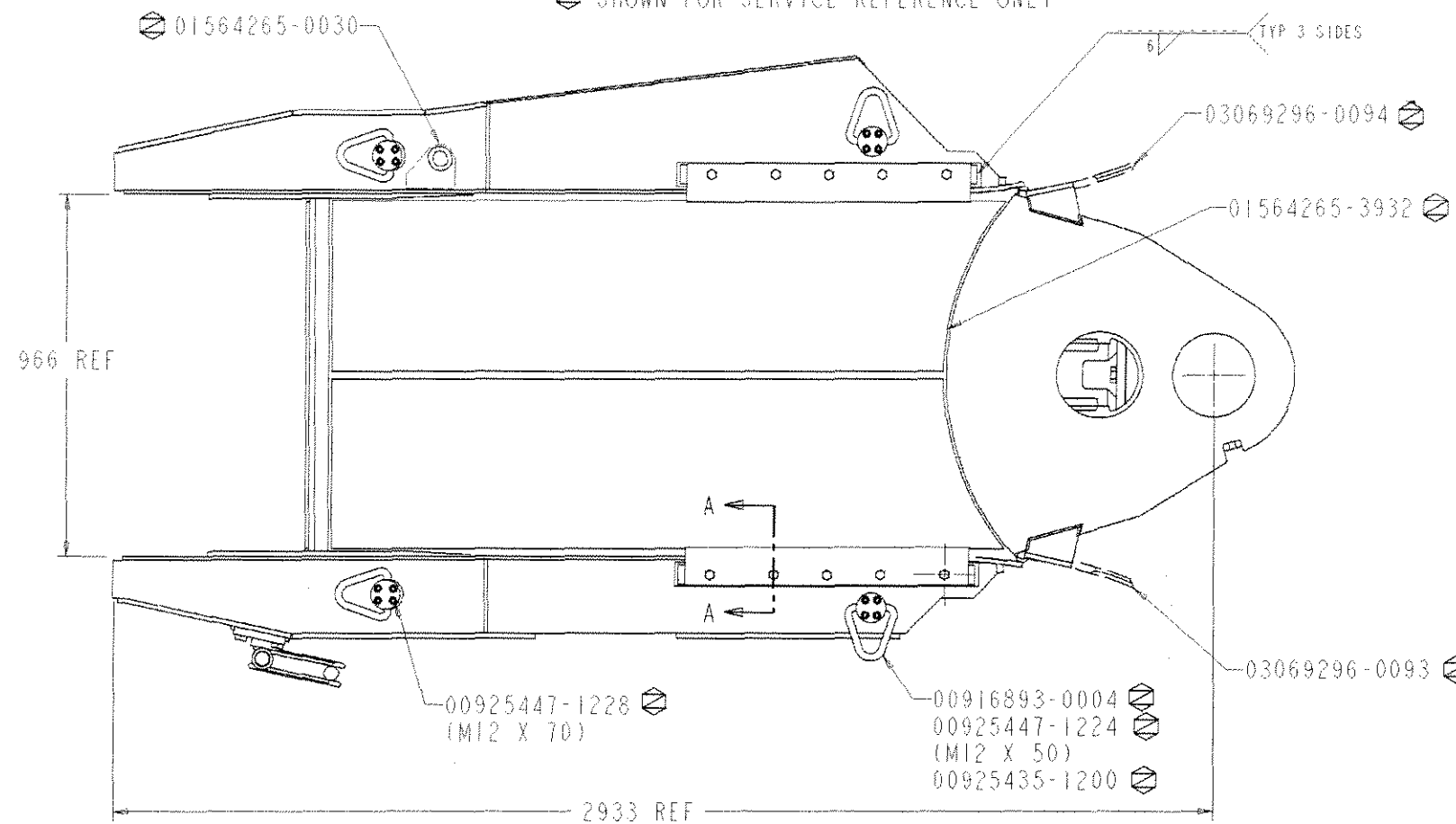


⊗ SHOWN FOR SERVICE REFERENCE ONLY

BILL OF MATERIAL: 00483004-0057

ITEM	PART NUMBER	QTY	DESCRIPTION
☒ 1	00925435-1600	10	NUT, HEX, M16
☒ 2	00925441-1624	10	HHCS, CL10.9, M16 X 50
☒ 3	00925498-1600	10	WASHER, M16
4	01069296-0023	2	GUIDE
5	01564265-3277	4	DETAIL
6	01564265-3389	2	DETAIL

FIELD B.M. 00720271-0015



SECTION A-A

CONVEYOR FRAME (SEE SALES ORDER)

00925441-2028 (M20 X 70)

00570425-0015

01069532-0131

00925271-1225

00925441-1626 (M16 X 60)

00061799-0000

00925441-2426 (M24 X 60)
00925498-2400

STANDARD LENGTH CONVEYOR
203 MM SIDEBOARD HEIGHT

CAD/CAM DRAWING
MANUAL REVISIONS
NOT AUTHORIZED

ALL WELDS MUST BE 483 MPa MINIMUM TENSILE

ENG ORDER
FDI 7900

E.O.
CHANGE

DATE ISSUED

SALES DRAWING
NO YES

MATERIAL

PATTERN NO

HEAT TREAT
HARDNESS
CARBURIZE (ICD)

DWG DIMS
IMPERIAL
METRIC

TOLERANCE TO BE AS SPECIFIED BELOW UNLESS OTHERWISE STATED

ALL DIMENSIONS IN MILLIMETERS UNLESS OTHERWISE STATED

MACHINING	FABRICATION PLATE & STRUCTURAL WORK	CASTINGS
± 0.5 mm	UP TO 250 mm 7.87 in	UP TO 1000 mm 31.5 in
	250 TO 1000 mm 7.87 to 31.5 in	WALL THICKNESS 4:12/12/1

ALL DIMENSIONS IN INCHES UNLESS OTHERWISE STATED

MACHINING	FABRICATION PLATE & STRUCTURAL WORK	CASTINGS
± 0.0125 in	UP TO 10" 254 mm	UP TO 36" 914 mm
	FUNCTIONAL DIMENSIONS UP TO 10" 254 mm OVER 10" 254 mm	WALL THICKNESS 3:12/12/2

FINISH SYMBOLS

SYMBOL	DESCRIPTION	SYMBOL	DESCRIPTION
⊘	PRECISION POLISH	⊘	COMMON MACHINING
⊘	FINE POLISH	⊘	ROUGH MACHINING
⊘	COMMON POLISH	⊘	HEAVY ROUGH
⊘	GRIND OR EQUAL	⊘	EX HEAVY ROUGH
⊘	SMOOTH MACHINING		

DR: E. SCHON
DATE: 29-JUL-28
CHK'D:
DATE:
APP:
DATE:
DWG:
DIMENSION TO: SK025382-0001
REPLACES:
REPLACED BY:

JOY PLANT LOCATION FRANKLIN, PENNSYLVANIA, USA

TITLE: SIDEBOARDS, FRAME, CONVEYOR SHEET 1 OF 1

SCALE: 0.125 CLASS: MINER

A1 DWG. NO. SK025382-0037

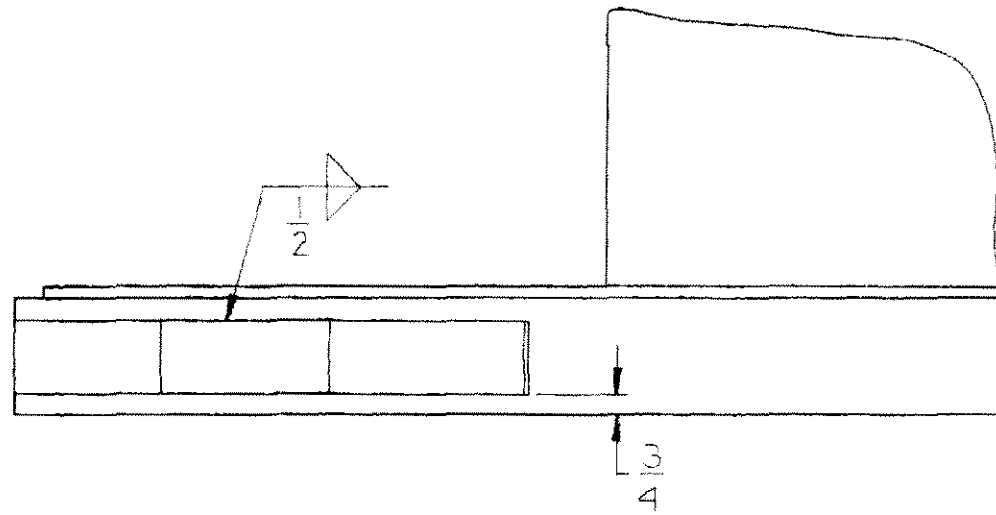
THIS DRAWING AND ALL INFORMATION THEREIN IS THE PROPERTY OF AND CONFIDENTIAL TO JOY MINING MACHINERY. IT MUST NOT BE MADE PUBLIC OR COPIED, IT IS LOANED SUBJECT TO RETURN UPON DEMAND, IT MUST NOT BE USED DIRECTLY OR INDIRECTLY IN ANY WAY BE DETRIMENTAL TO OUR INTEREST.

E/M Number	Description	Reference	Date	Sheet
00482993-0170	STOPS, ROOF, CONVEYOR	SK024774-0105 FDA0712	08/18/1988	01

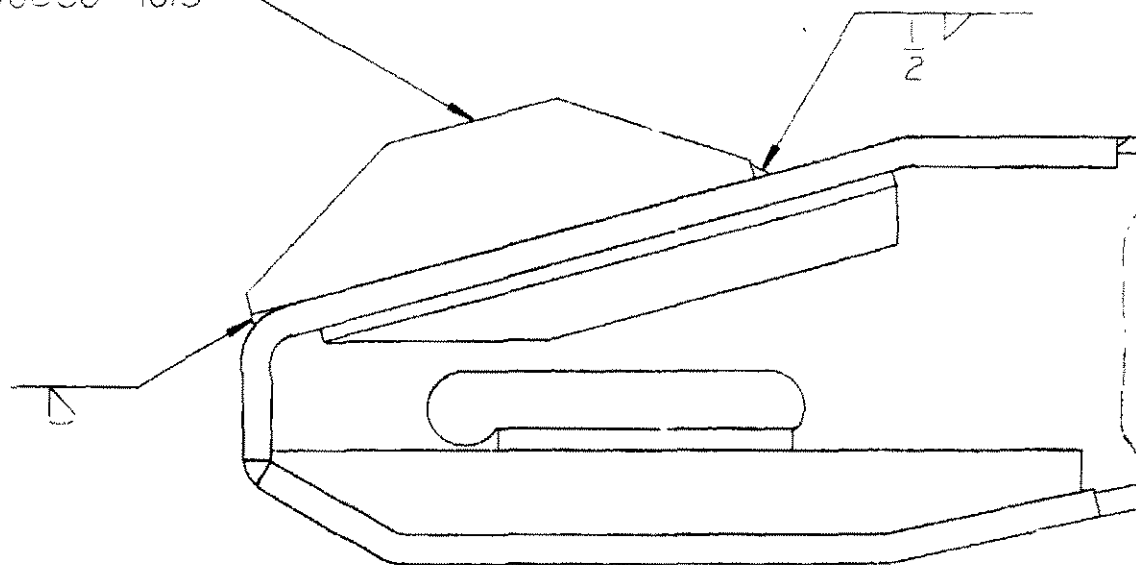
Qty	UOM	Part Number	Description	Ref No
2	EA	01566880-1015	DETAIL,BLOCK,STOP	10

***** End of Bill of Material *****

SK24774-105



01566860-1015



ALL WELDS 70,000 P.S.I. MIN. T.S.

FACTORY
482993-170

FIELD
703500-4757

LITHOPRINT, THIS DRAWING

This drawing and all information therein is the property of the JOY MANUFACTURING CO. is confidential and must not be made public or copied. It is loaned subject to return upon demand, is not to be used directly or indirectly in any way detrimental to our interest.

JOY MANUFACTURING CO.	
PLANT LOCATION AS INDICATED BELOW	
BIRMINGHAM, AL	LA GRANGE, NC
SUFFALO, NY	NICHIGAN CITY, IN
CAMBRIDGE, ONT. CANADA	NEW PHILADELPHIA, OH
CLARKMONT, NH	
E. ISLEHIDE, SCOTLAND	
FRANKLIN, PA	

PARTS REQ'D TO ADD ROOF STOP TO REAR CONVEYOR 14CM 9 & 10	
SIMILAR TO _____	NAME OR INITIAL & DATE: DR. JOE GIERLACH
SUPERSEDED BY _____	TR. _____
REPLACES _____	CK. _____
REPLACED BY _____	APPD. _____
SCALE: $\frac{1}{4}$ " = 1"	CLASS: 14CM

E. O. FCN629	REVISIONS	FCU705	FDA0712
DATE			

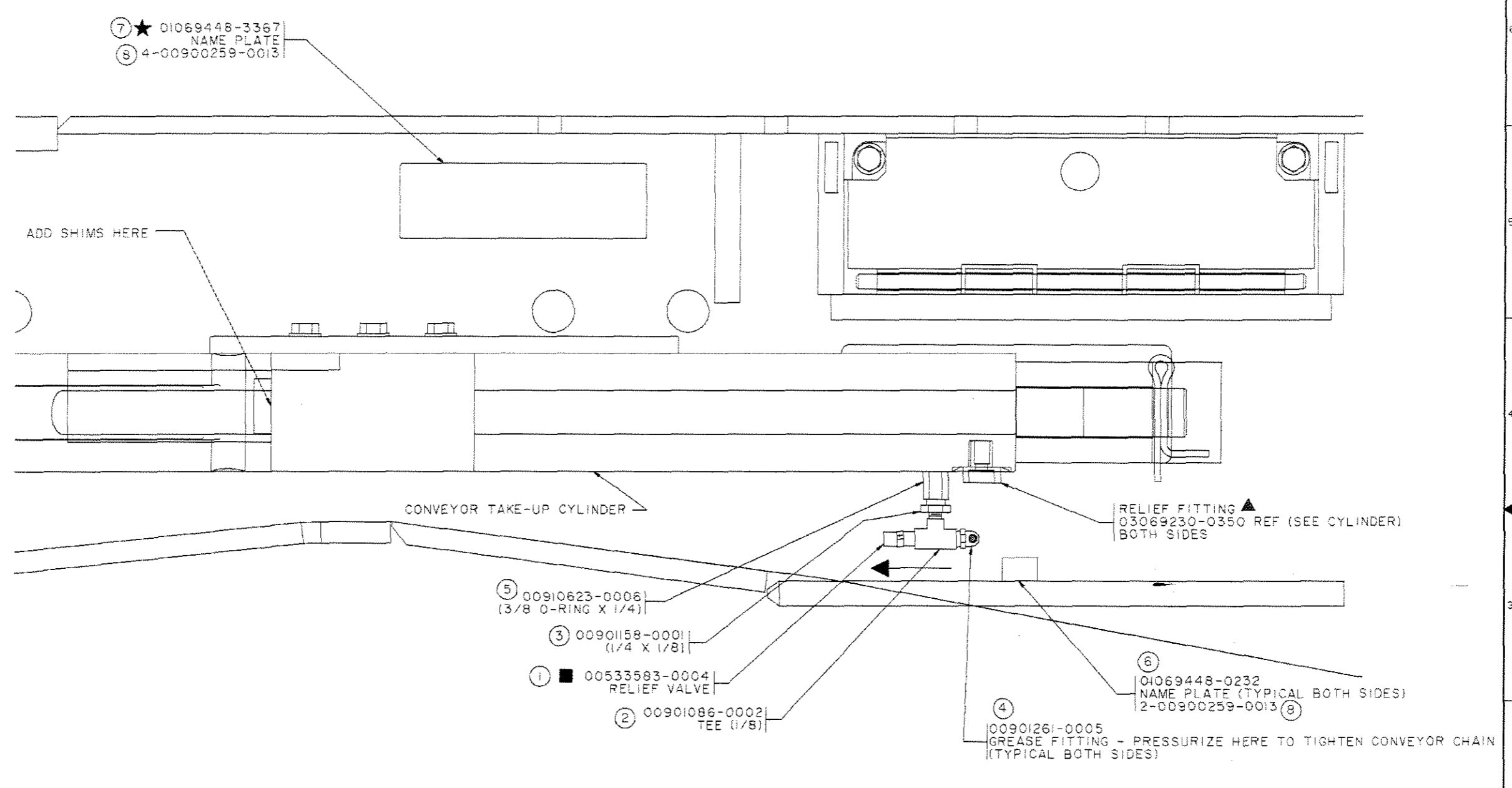
SK24774-105

B/M Number	Description	Reference	Date	Sheet
00720513-0021	TAKE-UP, GREASE, CONVEYOR	SK025547-0013 FDF5960	12/18/1997	01

Qty	UOM	Part Number	Description	Ref No
2	EA	00533583-0004	VALVE,RELIEF	1
2	EA	00901086-0002	TEE, 1/8 NPTF	2
2	EA	00901158-0001	BUSHING, 1/4 NPT X 1/8 NPT	3
2	EA	00901261-0005	FITTING, GREASE, SHORT, 90 DEG., 1/8 PT	4
2	EA	00910623-0006	ADAPTER, 3/8 "O" X 1/4 NPTF	5
2	EA	01069448-0232	PLATE, NAME (HYD TAKE-UP)	6
1	EA	01069448-3367	PLATE, NAME	7
8	EA	00900259-0013	SCREW, MACHINE, NO. 6 X 1/4	8

***** End of Bill of Material *****

DWG. NO. SK025547-0013 DO NOT SCALE WELDING STANDARD IS ISO METHOD A PROJECTION THIRD ANGLE



- ★ SEE CHAIN ADJUSTMENT PROCEDURE NAME PLATE 01069448-3367 USE IN PLACE OF -2010 NAME PLATE
- ▲ AFTER INSTALLATION OF SHIMS, RELIEVE GREASE PRESSURE BY UNSCREWING 03069230-0350 FITTING, TYPICAL BOTH SIDES.
- INSTALL RELIEF VALVE WITH ARROW DIRECTION TO RELIEVE TO ATMOSPHERE

BM 00720513-0021

ENG ORDER ① FDF5960	E.O. CHANGE ② 1002520							TOLERANCE TO BE AS SPECIFIED BELOW UNLESS OTHERWISE STATED				FINISH SYMBOLS				DR: TOM ALLEN	DATE: 12-09-97	PLANT LOCATION FRANKLIN PENNSYLVANIA	TITLE: GREASE TAKE-UP				
DATE ISSUED						ALL DIMENSIONS IN MILLIMETERS UNLESS OTHERWISE STATED						DESCRIPTION				CHK'D:	DATE:			APPROVAL:			
MATERIAL						MACHINING	FABRICATION PLATE & STRUCTURAL WORK	CASTINGS	A 4 N3 0.1 PRECISION POLISH	F 125 N6 3.2 COMMON MACHINE	G 250 N9 6.3 ROUGH MACHINE	H 500 N12 12.5 HEAVY ROUGH	X 1000 N15 25 EX HEAVY ROUGH	SIMILAR TO: SK025547-0007						REPLACES:	REPLACED BY:		
HEAT TREAT						ALL DIMENSIONS IN INCHES UNLESS OTHERWISE STATED						DESCRIPTION				THIS DRAWING AND ALL INFORMATION THEREIN IS THE PROPERTY OF AND CONFIDENTIAL TO JOY TECHNOLOGIES INC. IT MUST NOT BE MADE PUBLIC OR COPIED. IT IS LOANED SUBJECT TO RETURN UPON DEMAND. IS NOT TO BE USED DIRECTLY OR INDIRECTLY IN ANY WAY DETRIMENTAL TO OUR INTERESTS.				SCALE: NONE CLASS: 14CM 8 12CM		DWG. NO. SK025547-0013	
HARDNESS						FRACTIONAL DIMENSIONS																	
CARBURIZE (ECO)						UP TO 12" 1/32																	
PATTERN NO.						UP TO 36" 1/16																	
DWG. DIMS.						OVER 36" 1/8																	
CONFIDENTIAL						WALL THICKNESS																	
NO [X] YES []						1/2 - 1/32																	
IMPERIAL [X] METRIC []						1 - 1/32																	

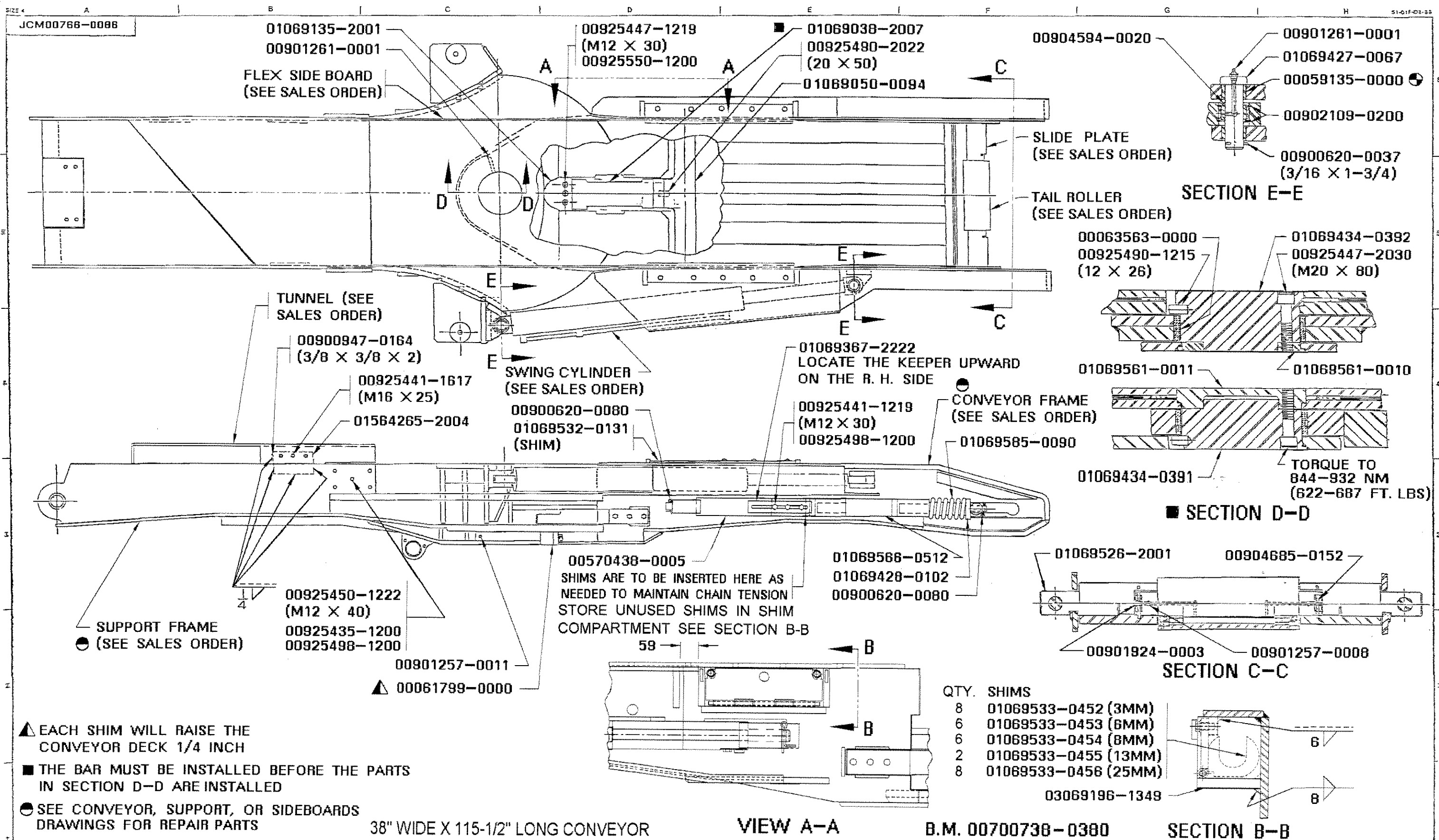
B/M Number	Description	Reference	Date	Sheet
00700738-0380	MOUNTING, FRAME, CONVEYOR AND	JCM00766-0086 FDF7897	08/10/1998	01

Qty	UOM	Part Number	Description	Ref No
4	EA	00059135-0000	BUSHING	10
3	EA	00061799-0000	SHIM	20
2	EA	00063563-0000	BUSHING	30
2	EA	00570438-0005	CYLINDER, TAKE-UP, GREASE	40
2	EA	00900620-0037	PIN, COTTER, 3/16 X 1-3/4	50
4	EA	00900620-0080	PIN, COTTER, 3/8 X 2	60
3	EA	00900947-0164	KEY, 3/8 X 3/8 X 2	70
2	EA	00901257-0008	NIPPLE, GREASE 1/4" NPT	80
2	EA	00901257-0011	fitting, grease, short, extra 1/4 ptf	90
2	EA	00901261-0001	GREASE FITTING	100
2	EA	00901924-0003	PLUG, HEX SOC, 1/4" NPT	110
4	EA	00902109-0200	RING, RETAINING, INTERNAL, AXIAL	120
2	EA	00904594-0020	BUSHING, ASSEMBLED, PLAIN	130
2	EA	00904685-0152	PIN, SPRING, .500 X 3.000	140
16	EA	00925435-1200	NUT, HEX, STYLE 2, CL. 12, M12 X 1.75	150
6	EA	00925441-1219	SCREW, CAP, CL. 10.9, M12 X 1.75 X 30	160
9	EA	00925441-1617	SCREW, CAP, CL. 10.9, M16 X 2 X 25	170
3	EA	00925447-1219	SCREW, CAP, CL. 12.9, M12 X 1.75 X 30	180
6	EA	00925447-2030	SCREW, CAP, CL. 12.9, M20 X 2.5 X 80	190
16	EA	00925450-1222	SCREW, CAP, CL. 12.9, M12 X 1.75 X 40	200
2	EA	00925490-1215	PIN, DOWELL, 12 X 26 - B	210
1	EA	00925490-2022	PIN, DOWELL, 20 X 50 - B	220
15	EA	00925498-1200	WASHER, FLAT, GR. A, CLASS 300HV, M12	230
3	EA	00925550-1200	WIRE, LOCKING, M12 X 1.75	240
1	EA	01069038-2007	DETAIL	250
1	EA	01069050-0094	BEAM, STRUCTURAL	255
1	EA	01069135-2001	CAM	260
2	EA	01069367-2222	KEEPER	270
2	EA	01069427-0067	PIN, HEADED	280
2	EA	01069428-0102	PIN, SHOULDERED	290
1	EA	01069434-0391	PIN, SPECIAL	300
1	EA	01069434-0392	PIN, SPECIAL	310
2	EA	01069526-2001	SHAFT	320
2	EA	01069532-0131	SHIM, RECTANGLE	330
8	EA	01069533-0452	SHIM, SPECIAL (3MM)	340
6	EA	01069533-0453	SHIM, SPECIAL (6MM)	350
6	EA	01069533-0454	SHIM, SPECIAL (8MM)	360
2	EA	01069533-0455	SHIM, SPECIAL (13MM)	370
8	EA	01069533-0456	SHIM, SPECIAL (25MM)	380
1	EA	01069561-0010	PLATE, SPECIAL	390
1	EA	01069561-0011	PLATE, SPECIAL	400
2	EA	01069566-0512	SPACER, SPECIAL	410
2	EA	01069585-0090	SPRING	420

B/M Number	Description	Reference	Date	Sheet
00700738-0380	MOUNTING, FRAME, CONVEYOR AND			

Qty	UOM	Part Number	Description	Ref No
3	EA	01564265-2004	DETAIL	430
1	EA	03069196-1349	COVER	450

***** End of Bill of Material *****



▲ EACH SHIM WILL RAISE THE CONVEYOR DECK 1/4 INCH

■ THE BAR MUST BE INSTALLED BEFORE THE PARTS IN SECTION D-D ARE INSTALLED

● SEE CONVEYOR, SUPPORT, OR SIDEBOARDS DRAWINGS FOR REPAIR PARTS

● TACK WELD EACH BUSHING 4 PLACES

ALL WELDS MUST BE 483 Mpa MIN TENSILE

QTY. SHIMS

8	01069533-0452 (3MM)
6	01069533-0453 (6MM)
6	01069533-0454 (8MM)
2	01069533-0455 (13MM)
8	01069533-0456 (25MM)

38" WIDE X 115-1/2" LONG CONVEYOR

VIEW A-A

B.M. 00700738-0380

SECTION B-B

ENG ORDER: FDF 3065 REVISIONS: B) FDF3588 C) FDF7887		FINISH SYMBOLS MICRO INCHES DESCRIPTION MICRO INCHES DESCRIPTION A 4 PRECISION POLISH F 175 COMMON MACHINE B 8 FINE POLISH G 275 ROUGH MACHINE C 16 COMMON POLISH W 250 HEAVY ROUGH D 32 GRIND OR EQUAL I 150 EX HEAVY ROUGH E 63 SMOOTH MACHINE		JOY TECHNOLOGIES INC. FRANKLIN, PENNSYLVANIA 16323	MOUNTING FRAME, CONVEYOR AND SUPPORT DR. D.A. HOOVER DATE 2/21/87 CLASS SCALE
UNLESS OTHERWISE NOTED, ALL DIMENSIONS IN INCHES. MACHINING DIMENSIONS LIMITED TO FRACTIONAL 1/164 ANGULAR ± 1/2°. STRUCTURAL DIMENSIONS LIMITED TO ± 1/16. DO NOT SCALE THIS DRAWING	MATERIAL HEAT TREAT HARDNESS CARBURIZE (HDD)	PATTERN NO LITHOPRINT YES <input checked="" type="checkbox"/> NO <input type="checkbox"/>	THIS DRAWING AND ALL INFORMATION THEREIN IS THE PROPERTY OF AND CONFIDENTIAL TO JOY TECHNOLOGIES INC. IT MUST NOT BE MADE PUBLIC OR COPIED. IT IS LOANED SUBJECT TO RETURN UPON DEMAND. IS NOT TO BE USED DIRECTLY OR INDIRECTLY IN ANY WAY DETRIMENTAL TO OUR INTEREST.	SIMILAR TO JCM00766-0071 REPLACES REPLACED BY	

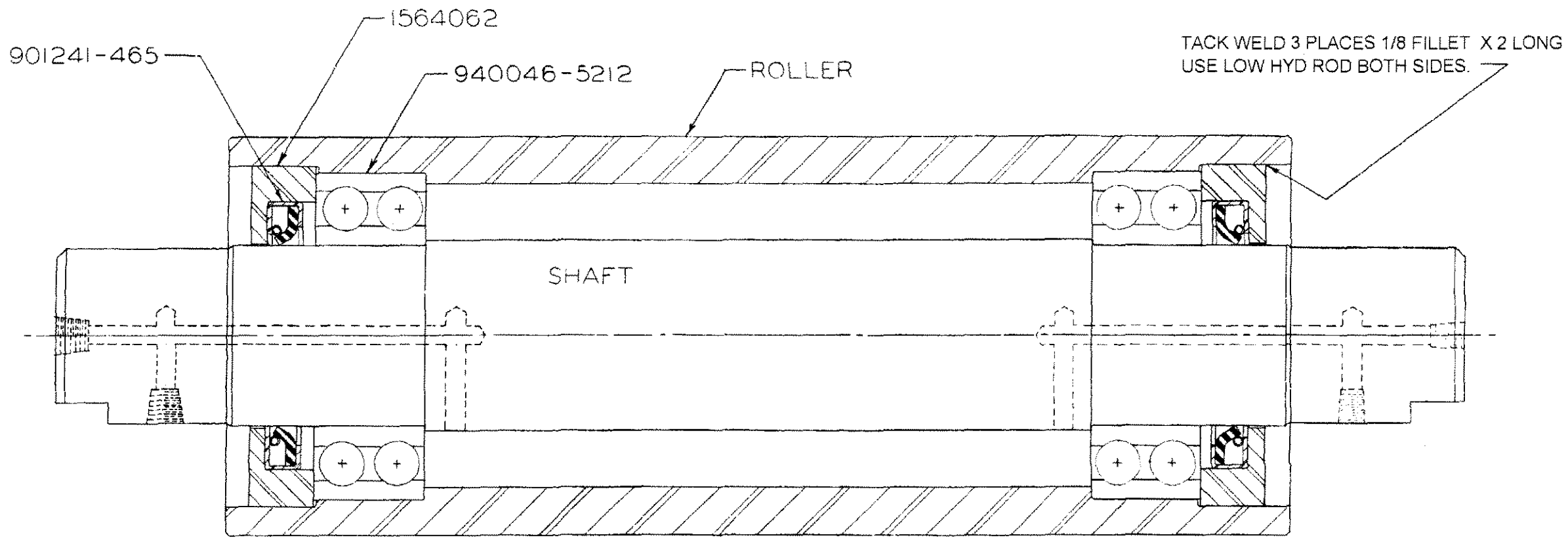
JCM00766-0086

B/M Number	Description	Reference	Date	Sheet
00531840-0004	ROLLER, TAIL, CHAIN, CONVEYOR	00531840-0004 1001398	01/05/1999	01

Qty	UOM	Part Number	Description	Ref No
2	EA	00901241-0465	SEAL, LIP	10
2	EA	00940046-5212	BEARING, BALL	20
1	EA	01069527-0092	SHAFT	30
2	EA	01564062-0000	CARRIER, SEAL	40
1	EA	01566475-0004	ROLLER	50

***** End of Bill of Material *****

531840-4



531840-4	01566475 - 0004	1069527-92
ROLLER ASSY	ROLLER	SHAFT

ENG. ORDER <u>FBI 379</u> DATE ISSUED _____	REVISIONS <u>FBR355 FBS186 FBX187 FDF6412</u> (6) 1001398	FINISH SYMBOLS <table border="1"> <tr> <th>#</th> <th>MICRO INCHES</th> <th>DESCRIPTION</th> <th>#</th> <th>MICRO INCHES</th> <th>DESCRIPTION</th> </tr> <tr> <td>A</td> <td>4</td> <td>PRECISION POLISH</td> <td>G</td> <td>250</td> <td>ROUGH MACH.</td> </tr> <tr> <td>B</td> <td>8</td> <td>FINE POLISH</td> <td>H</td> <td>500</td> <td>HEAVY ROUGH</td> </tr> <tr> <td>C</td> <td>16</td> <td>COMMON POLISH</td> <td>K</td> <td>1000</td> <td>EX HEAVY ROUGH</td> </tr> <tr> <td>D</td> <td>32</td> <td>GRIND OR EQUAL</td> <td></td> <td></td> <td></td> </tr> <tr> <td>E</td> <td>63</td> <td>SMOOTH MACH.</td> <td></td> <td></td> <td></td> </tr> <tr> <td>F</td> <td>125</td> <td>COMMON MACH.</td> <td></td> <td></td> <td></td> </tr> </table>	#	MICRO INCHES	DESCRIPTION	#	MICRO INCHES	DESCRIPTION	A	4	PRECISION POLISH	G	250	ROUGH MACH.	B	8	FINE POLISH	H	500	HEAVY ROUGH	C	16	COMMON POLISH	K	1000	EX HEAVY ROUGH	D	32	GRIND OR EQUAL				E	63	SMOOTH MACH.				F	125	COMMON MACH.				JOY MANUFACTURING CO. PL. MFG. LOCATION AS INDICATED BELOW <table border="1"> <tr> <td>BUFFALO, N. Y.</td> <td>NEW PHILADELPHIA, D.</td> </tr> <tr> <td>CLAREMONT, N. H.</td> <td></td> </tr> <tr> <td>FRANKLIN, PA.</td> <td><input checked="" type="checkbox"/></td> </tr> <tr> <td>GALT, ONTARIO, CANADA</td> <td></td> </tr> <tr> <td>GREENOCK, SCOTLAND</td> <td></td> </tr> <tr> <td>MICHIGAN CITY, IND.</td> <td></td> </tr> </table>	BUFFALO, N. Y.	NEW PHILADELPHIA, D.	CLAREMONT, N. H.		FRANKLIN, PA.	<input checked="" type="checkbox"/>	GALT, ONTARIO, CANADA		GREENOCK, SCOTLAND		MICHIGAN CITY, IND.		ROLLER ASSEMBLY SIMILAR TO <u>531840-3</u> SUPERSEDED BY _____ REPLACED BY _____ NAME OR INITIALS & DATE DR. <u>SP 5-30-73</u> TR. _____ CK. _____ APPD. _____ SCALE <u>FULL</u> CLASS <u>14BUI0</u> 531840-4
#	MICRO INCHES	DESCRIPTION	#	MICRO INCHES	DESCRIPTION																																																					
A	4	PRECISION POLISH	G	250	ROUGH MACH.																																																					
B	8	FINE POLISH	H	500	HEAVY ROUGH																																																					
C	16	COMMON POLISH	K	1000	EX HEAVY ROUGH																																																					
D	32	GRIND OR EQUAL																																																								
E	63	SMOOTH MACH.																																																								
F	125	COMMON MACH.																																																								
BUFFALO, N. Y.	NEW PHILADELPHIA, D.																																																									
CLAREMONT, N. H.																																																										
FRANKLIN, PA.	<input checked="" type="checkbox"/>																																																									
GALT, ONTARIO, CANADA																																																										
GREENOCK, SCOTLAND																																																										
MICHIGAN CITY, IND.																																																										

B/M Number	Description	Reference	Date	Sheet
00533854-0005	PLATE, SLIDE, ROLLER, TAIL	1004878	05/17/1999	

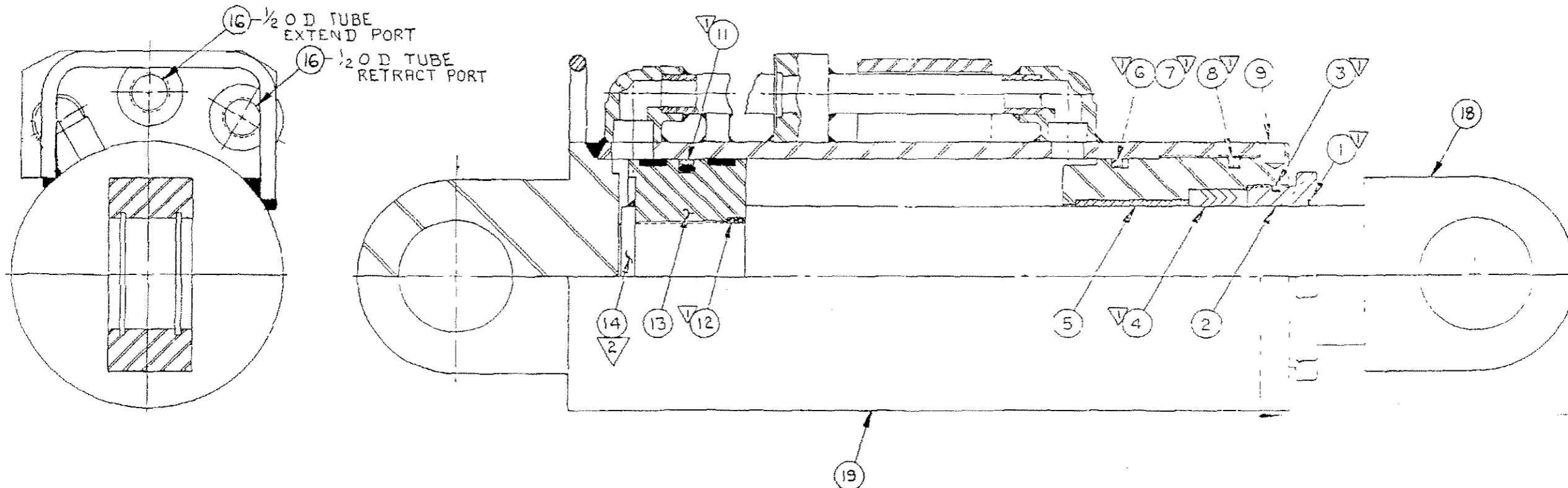
Qty	UOM	Part Number	Description	Ref No
1	EA	01564265-1191	DETAIL	10
1	EA	01564265-1192	DETAIL	20
2	EA	01564265-1344	DETAIL	30
1	EA	01566210-0004	DETAIL	40
1	EA	01566210-0006	DETAIL	50
1	EA	01566210-0007	DETAIL	60

***** End of Bill of Material *****

B/M Number	Description	Reference	Date	Sheet
00500140-3339	CYLINDER, SWING, CONVEYOR	00500140-3297 FDF7957	09/17/1998	01

Qty	UOM	Part Number	Description	Ref No
1	EA	03190338-0017	WIPER	1
1	EA	03190014-0088	GLAND	2
1	EA	03190154-0046	PLUG,NYLOC	3
1	EA	03190122-0193	PACKING	4
1	EA	03190455-0057	RING, WEAR	5
1	EA	00908388-0344	RING, BACK-UP	6
1	EA	00907865-0344	O-RING (1/8 X 3-7/8"I.D.)	7
1	EA	03190154-0047	PLUG,NYLON	8
1	EA	03190038-0096	HEAD	9
2	EA	00907865-0224	O-RING (1/8 X 1-3/4"I.D.)	12
1	EA	00506205-2415	PISTON, UNITIZED	13
1	EA	00900947-1697	KEY, 1/2 X 1/4 X 2-1/2	14
1	EA	00906893-0102	CLOSURES, PROTECTIVE	16
1	EA	03190194-0519	ROD	18
1	EA	03189949-0279	CYLINDER, MAIN	19

***** End of Bill of Material *****

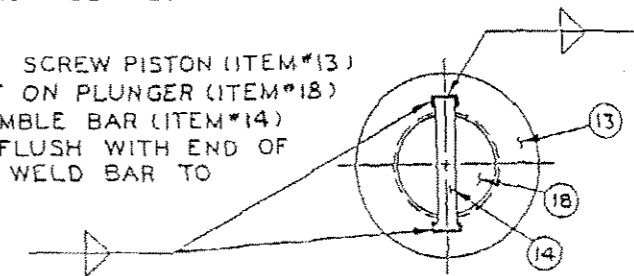


CYLINDER	RELEASE	REVISIONS				
00500140-3297	FCF980	FCN125	FDC3421	FDC3049	FDE4543	PDF5972
00500140-3339	FCF980	FCN125	FDC3049	FDE4543	PDF5972	

NOTES:

▽ SEAL KIT JOY TECH NO 00506205-1815

▽ ASS'Y NOTE SCREW PISTON (ITEM#13) DOWN TIGHT ON PLUNGER (ITEM#18) THEN ASSEMBLE BAR (ITEM#14) IN PLACE, FLUSH WITH END OF PLUNGER & WELD BAR TO PISTON



MAX OPERATING PRESSURE=2000 PSI

ENGR ORDER FCF980	REVISIONS FCN125 DC3421 FDC3049 FDE4543 PDF5972	LITHO PRINT YES <input checked="" type="checkbox"/> NO <input type="checkbox"/>
DATE ISSUED	PATTERN NO	DWG DIMS MATERIAL

TOLERANCE TO BE AS SPECIFIED BELOW UNLESS OTHERWISE STATED			
ALL DIMENSIONS IN MILLIMETERS UNLESS OTHERWISE STATED			
MACHINING	FABRICATION PLATE & STRUCTURAL WORK	CASTINGS	WALL THICKNESS 1/16 1/32
± .005	± .010	± .015	± .005
± .002	± .005	± .007	± .002
± .001	± .003	± .004	± .001
± .0005	± .001	± .0015	± .0005
± .0002	± .0005	± .0007	± .0002

FINISH SYMBOLS						
SYMBOL	FINISH	DESCRIPTION	SYMBOL	FINISH	DESCRIPTION	
A	01	PRECISION POLISH	F	125	N8	3.2 COMMON MACHINE
B	02	FINE POLISH	G	250	N9	6.3 COMMON MACHINE
C	04	COMMON POLISH	H	400	N10	12.5 HEAVY ROUGH
D	08	WIND OR EQUAL	K	1000	N11	25 VERY HEAVY ROUGH
E	16	SMOOTH MACHINE				

DR	SCHMOUTZ
DATE	10 AUG 94
CHK D	
DATE	
APP	
DATE	
SIMILAR TO	
REPLACES	
REPLACED BY	

PLANT LOCATION	FRANKLIN, PA.
TITLE	CYLINDER, CONV SWING
SCALE	CLASS MINERS
DWG NO	00500140-3297

THIS DRAWING AND ALL INFORMATION THEREIN IS THE PROPERTY OF AND CONFIDENTIAL TO JOY TECHNOLOGIES INC. IT MUST NOT BE MADE PUBLIC OR COPIED, IT IS LOANED SUBJECT TO RETURN OF * DEMAND IS NOT TO BE USED DIRECTLY OR INDIRECTLY IN ANY WAY DETRIMENTAL TO OUR INTEREST

B/M Number	Description	Reference	Date	Sheet
00500112-0554	CYLINDER, ELEVATE, CONVEYOR	FDE5600	12/21/1994	

Qty	UOM	Part Number	Description	Ref No
1	EA	01701933-0000	WIPER	1
1	EA	01701123-0000	RING, WIPER	2
1	EA	01701335-0000	RING, WIPER	3
1	EA	01701915-0000	NUT	4
1	EA	01700764-0000	NUT	5
1	EA	01701346-0000	NUT, PACKING	6
1	EA	01701122-0000	PACKING	7
1	EA	01701397-0000	PACKING	8
1	EA	01190186-0127	RING, STOP	9
1	EA	01701205-0000	RING, STOP	10
1	EA	01567707-0032	BEARING	11
1	EA	01701203-0000	RING, BEARING	12
1	EA	01701202-0000	RING, BEARING	13
2	EA	01701347-0000	SCREW, SET	15
1	EA	00900531-0031	SCREW, SET, 1/4-20 X 3/8	16
2	EA	00910618-0008	PLUG, 1/2 "O"	17
2	EA	00910618-0004	PLUG, 1/4 "O"	18
1	EA	01190149-0135	PLATE	19
2	EA	03190154-0046	PLUG, NYLOC	20
1	EA	00900574-0003	BALL, 3/16	21
1	EA	00534613-0023	VALVE, CHECK	22
1	EA	00506205-1852	PLUNGER	25
1	EA	00506205-1851	SLEEVE	26
1	EA	03069546-0037	SLEEVE	27
1	EA	00506205-1846	CYLINDER, MAIN	28

***** End of Bill of Material *****

0200-1100-92
00534613-0020

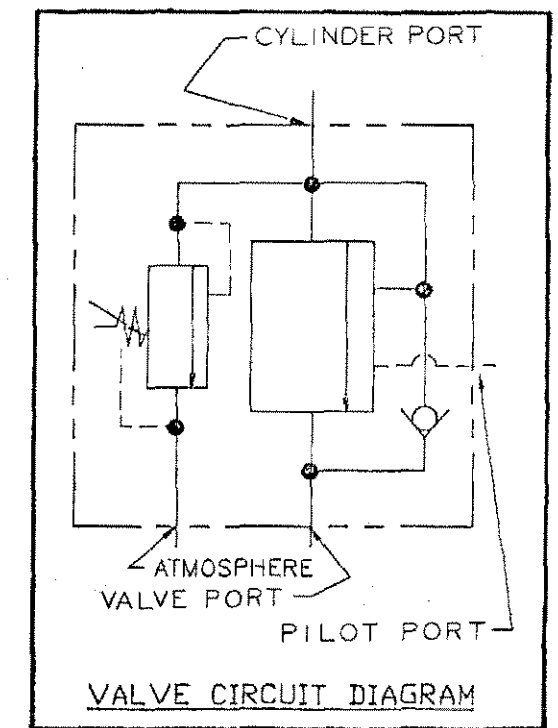
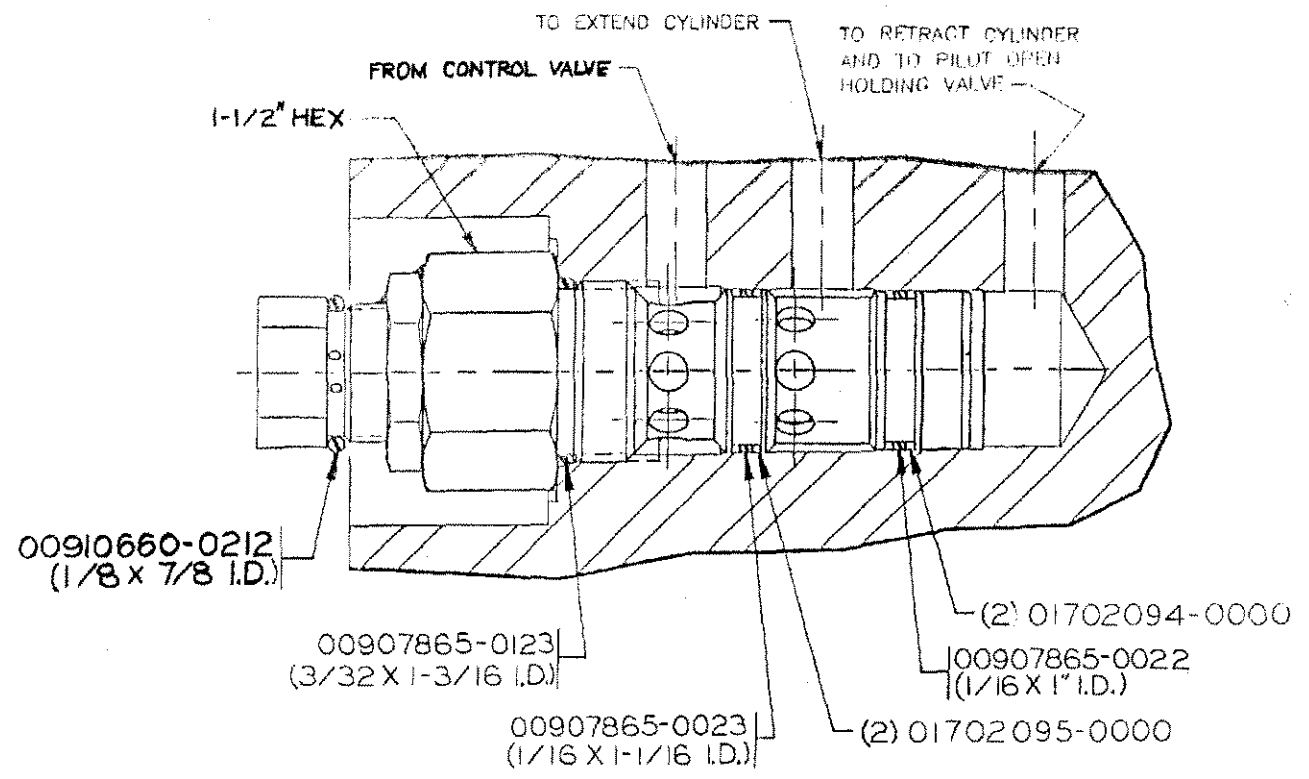
DO NOT SCALE

WELDING STANDARD
IS ISO METHOD A

PROJECTION
THIRD ANGLE

NOTES:

ALL SEALS CAN BE ORDERED AS SEAL KIT 00506205-2225
VALVES ARE SUPPLIED WITH BLACK OXIDE FINISH.



00534613-0024	2750 ± 50	00534613-0010	FDE4543	FDE6334	FDE7930
00534613-0023	2500 ± 50	00534613-0009	FDE4543	FDE6334	FDE7930
00534613-0022	2000 ± 50	00534613-0008	FDE4543	FDE6334	FDE7930
00534613-0021	1500 ± 50	00534613-0007	FDE4543	FDE6334	FDE7930
00534613-0020	825 ± 50	00534613-0011	FDE4543	FDE6334	FDE7930
JOY PT. NO.	RELIEF PRESSURE SETTING	REPLACES	RELEASING E.O.	REVISIONS	

PNC ORDER
FDE4543
 DATE ISSUED: _____
 REVISIONS: **FDE6334** **FDE7930**
 MATERIAL: _____
 LITHO PRINT: YES NO
 HEAT TREAT: _____
 FINISHNESS: _____
 CHARACTERIZE ACCU: _____

TOLERANCE TO BE AS SPECIFIED BELOW UNLESS OTHERWISE STATED
 ALL DIMENSIONS IN MILLIMETERS UNLESS OTHERWISE STATED
 MACHINING: UP TO 300mm ± 0.5mm, 301 TO 1000mm ± 0.75mm, 1001 TO 2000mm ± 1.0mm, WALL THICKNESS 1/2" - 1/2X
 FABRICATION PLATE & STRUCTURAL WORK: _____
 CASTINGS: _____
 ALL DIMENSIONS IN INCHES UNLESS OTHERWISE STATED
 MACHINING: UP TO 12" ± 0.0125, 12" TO 36" ± 0.015, OVER 36" ± 0.02
 FRACTIONAL DIMENSIONS: UP TO 12" 1/64 OVER 12" 1/32, 12" TO 36" 1/16, OVER 36" 1/8
 WALL THICKNESS: 1/2" - 1/2X

FINISH SYMBOLS

BY	INCHES	SY	INCHES	SY	INCHES	SY	INCHES	SY	DESCRIPTION
A	4	M3	0.1	F	125	M6	1.2	F	COMMON MACHINE
B	8	M4	0.2	G	250	M9	6.3	R	ROUGH MACHINE
C	15	M5	0.4	H	500	M12	12.5	EX	HEAVY ROUGH
D	32	M6	0.8	K	1000	M1	25	EX	HEAVY ROUGH
E	63	M7	1.6						SMOOTH MACHINE

OR: SCHMOLTZ
 DATE: 14 AUG 94
 CHK'D: _____
 DATE: _____
 APP'D: _____
 DATE: _____
 SIMILAR TO: _____
 REPLACES: _____
 REPLACED BY: _____

PLANT LOCATION: FRANKLIN, PA
 TITLE: VALVE, CHECK (PILOT OPER. ATMOS. RELIEF)
 SCALE: _____ CLASS: MINERS
 DWG. NO.: 00534613-0020

B/M Number	Description	Reference	Date	Sheet
00703481-0017	MOUNTING, CONVEYOR ASSEMBLY	JCM00870-0018 1003719	04/05/1999	01

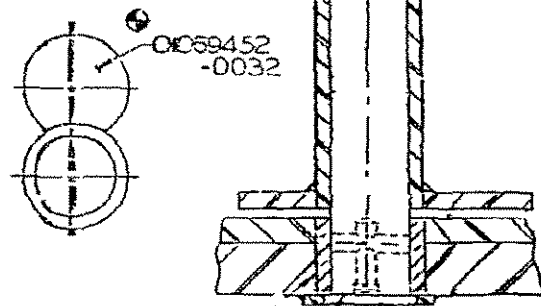
Qty	UOM	Part Number	Description	Ref No
4	EA	00900012-0014	SCREW, CAP, GR. 5, 1/2-13 X 1	10
4	EA	00900012-0035	SCREW, CAP, GR. 5, 5/8-11 X 1-1/2	20
4	EA	00900302-0004	WASHER, LOCK, 1/2	30
4	EA	00900302-0064	WASHER, STANDARD LOCK, 5/8"	40
4	EA	00900322-0013	WASHER, 5/8	50
4	EA	01069367-0170	KEEPER	60
4	EA	01069432-0691	PIN, PLAIN	70
5	EA	01069532-0162	SHIM, RECTANGULAR	80
5	EA	01069532-0163	SHIM, RECTANGULAR	90
2	EA	03069427-0280	PIN	100
2	EA	03069540-2002	SHOE	110

***** End of Bill of Material *****

JCM00870-0018

KEEPER PLATE

- 03061761-0006(14CM15/14CM14)
- 00A61761-0000(14CM9/14CM1)



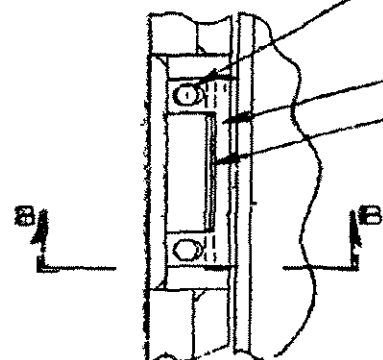
01069128-0164

03069427-0280

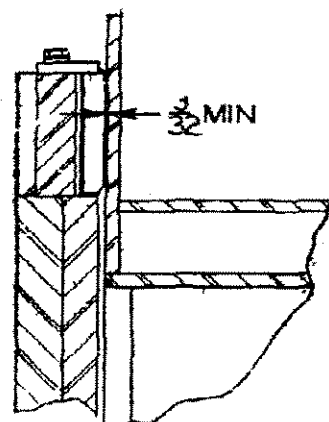
SECTION L-L
CONVEYOR HINGE PIN

00900012-0035
00900322-0013
00900302-0064

03069540-2002
01069532-0162 (1/4)
01069532-0163 (1/8)
(LOCATE HOLE IN
UP POSITION)

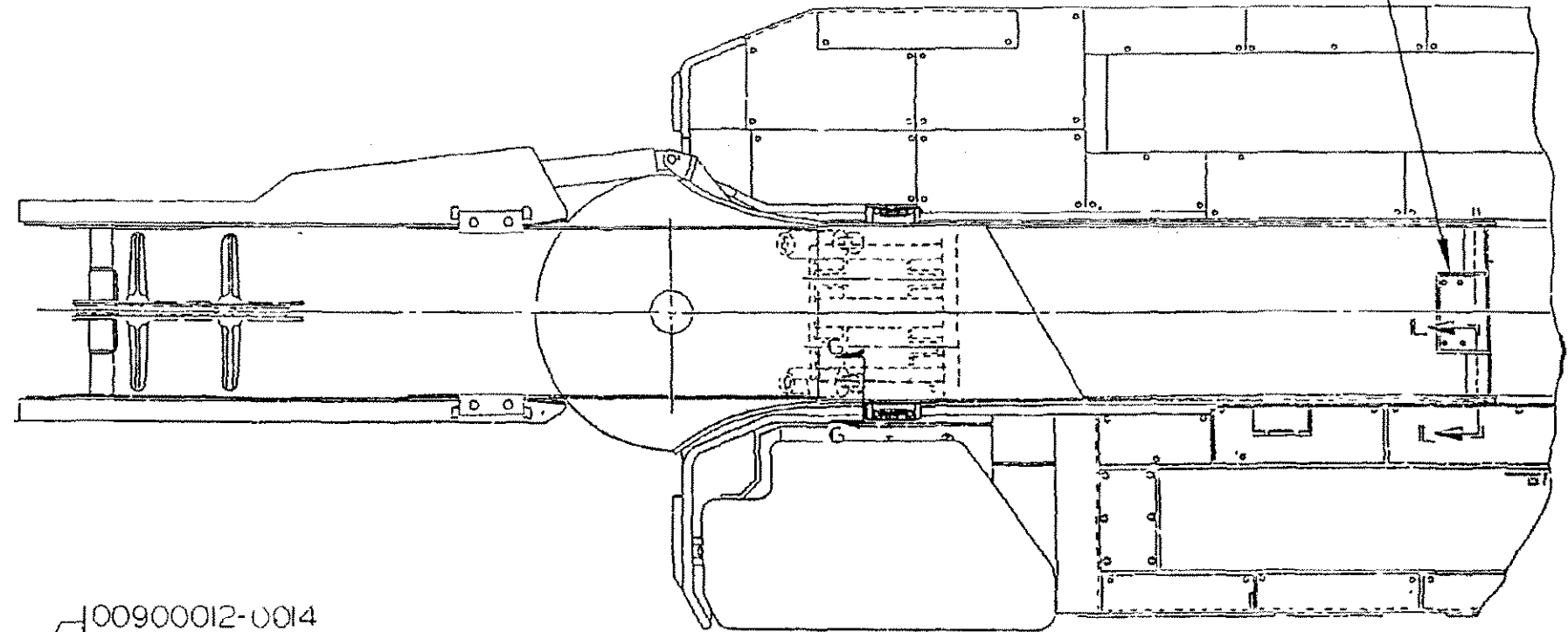


SECTION A-A



SECTION B-B

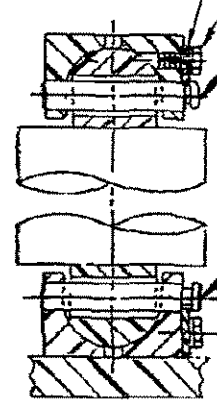
FOR SERVICE REF ONLY



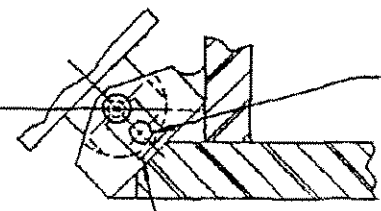
00900012-0014
(1/2 X 1)
00900302-0004

01069367-0170

01069432-0691

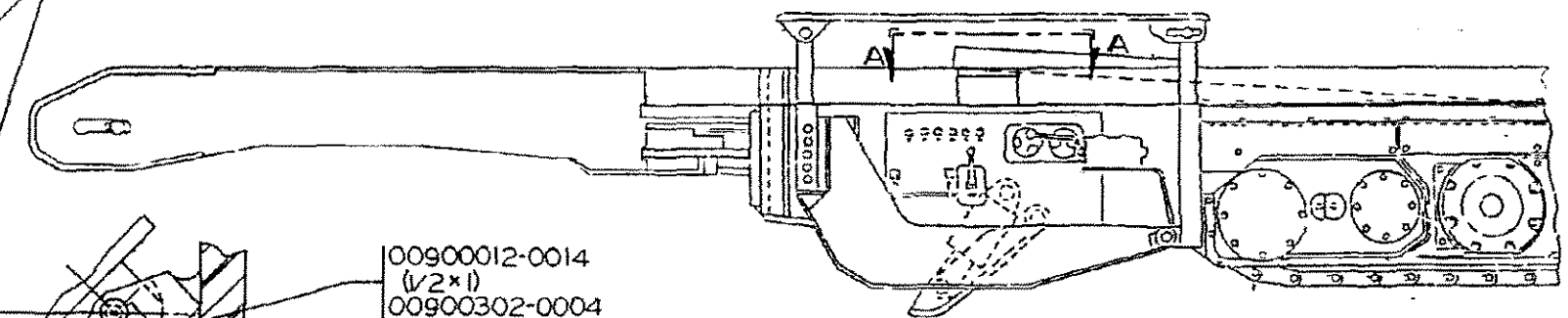


SECTION G-G
CONVEYOR CYLINDER
MOUNTING



00900012-0014
(1/2 X 1)
00900302-0004

ALL WELDS MUST BE TO 600
V MINUM TENSILE.



BM: 00703481-0017

ENG ORDER FDC6995	REVISIONS	FDC7245 FDC8193 FDE6512 1003718	FIT TO SYM 80.5	JOY TECHNOLOGIES INC	MOUNTING CONVEYOR ASSEMBLY FORWARD PIVOT
11-000111 11-000111	11-000111 11-000111	11-000111 11-000111	11-000111 11-000111	11-000111 11-000111	11-000111 11-000111
JCM00870-0018					JCM00870-0018

B/M Number	Description	Reference	Date	Sheet
00509192-0060	CHAIN, CONVEYOR (3-1/4 P)	00509192-0000 FCQ0747	07/27/1998	01

Qty	UOM	Part Number	Description	Ref No
14	EA	01451897-0000	PLATE, SIDE	10
1	EA	01451897-0001	PLATE, SIDE	20
30	EA	01452040-0000	FLIGHT	40
30	EA	01452051-0001	RING, RETAINING	50
15	EA	05012234-0000	LINK, CONNECTOR	60
30	EA	01452116-0012	PIN, CHAIN	80
30	EA	03452119-0001	LINK, SWIVEL	90

***** End of Bill of Material *****

DWF NO		00509192 0000		REV I	
REVISIONS					
ZONE	REV	DATE	APPROVED		
A	FC00195				
B	FC00249	9 MAR 89			
C	FC00595				

NOTE:
ONE FLIGHT SECTION IS
INVERTED IN EACH CHAIN
PACKAGE FOR RETURN
DECK CLEANING PURPOSES.

05012235 CONNECTING LINK
INCLUDES TWO 01452051 0001 RETAINING RINGS

- CHAIN CAN BE SHORTENED 6.5 INCHES MINIMUM BY :
1. REMOVING ONE FLIGHT SECTION (3 PITCHES).
 2. ADDING ONE 1451898-0000 ROLLER LINK (1 PITCH).

PACKAGE NUMBER	NUMBER OF FLIGHT SECTIONS	LENGTH
00509192 0048	12	13'
00509192 0052	13	14' 1"
00509192 0056	14	15' 2"
00509192 0060	15	16' 3"

05012212 0002 FLIGHT SECTION
INCLUDES 2 FLIGHTS,
2 UNIVERSALS,
AND 2 FLIGHT PINS

1.12" DIA.
36.38" OVERALL WIDTH

35°

13" FLIGHT SPACING

1" DIA.

SECTION A-A

THIS DRAWING AND ALL INFORMATION THEREIN IS THE PROPERTY OF AND CONFIDENTIAL TO THE JOY MANUFACTURING COMPANY. IT MUST NOT BE MADE PUBLIC OR COPIED. IT IS LOANED SUBJECT TO RETURN UPON DEMAND. IT IS NOT TO BE USED DIRECTLY OR INDIRECTLY IN ANY WAY DETRIMENTAL TO THE INTERESTS OF THE JOY MANUFACTURING COMPANY.

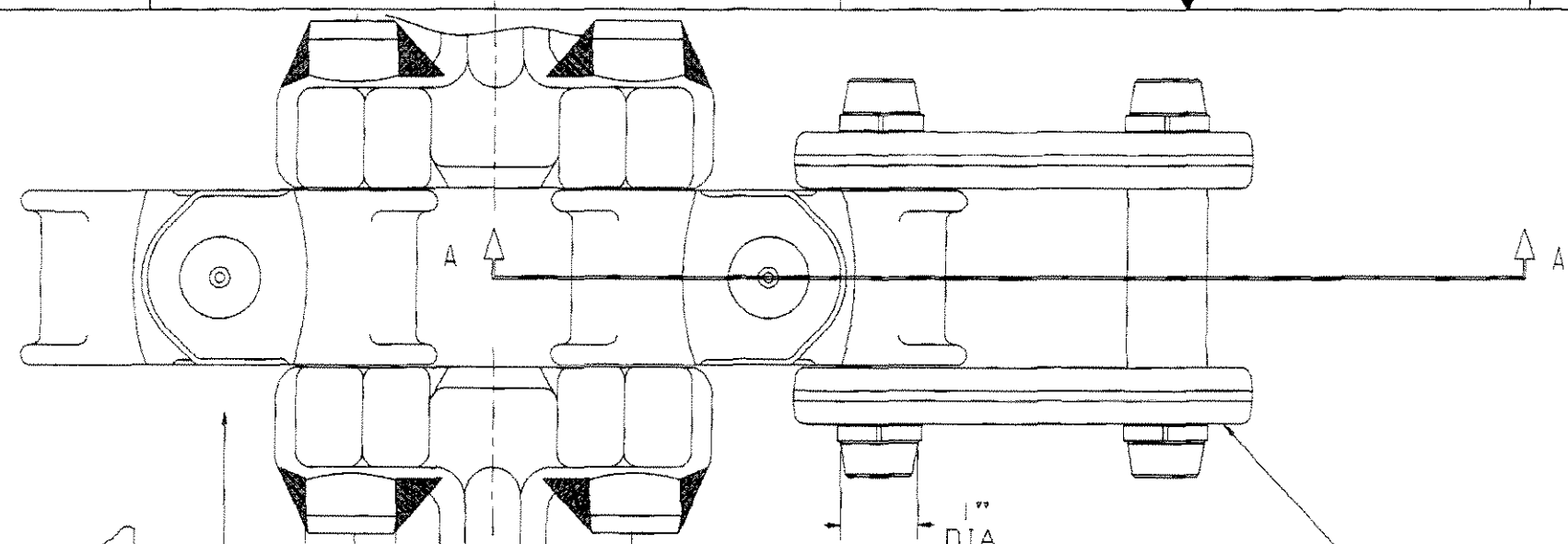
LITHOPRINT	YES	NO	MATERIAL	
DRAFTER			CAREURIZE	
CHECKER			CLASS	SIMILAR TO
ENGINEER			JOY MANUFACTURING COMPANY FRANKLIN, PENNA. 16323	
APPROVAL			3 1/4 PITCH UNIVERSAL CONVEYOR CHAIN - PACKAGE & ASSEMBLY INSTRUCTIONS 36 3/8" WIDE	
CAD / CAM DRAWING			SIZE	PSCM NO.
MANUAL REVISIONS			D 75003	00509192 0000
NOT AUTHORIZED			SCALE FULL	WGT.
				SHEET 1

B/M Number	Description	Reference	Date	Sheet
00509192-0056	CHAIN, CONVEYOR (3-1/4 P)	00509192-0000 FCQ0747	07/27/1998	01

Qty	UOM	Part Number	Description	Ref No
13	EA	01451897-0000	PLATE, SIDE	10
1	EA	01451897-0001	PLATE, SIDE	20
28	EA	01452040-0000	FLIGHT	40
28	EA	01452051-0001	RING, RETAINING	50
14	EA	05012234-0000	LINK, CONNECTOR	60
28	EA	01452116-0012	PIN, CHAIN	80
28	EA	03452119-0001	LINK, SWIVEL	90

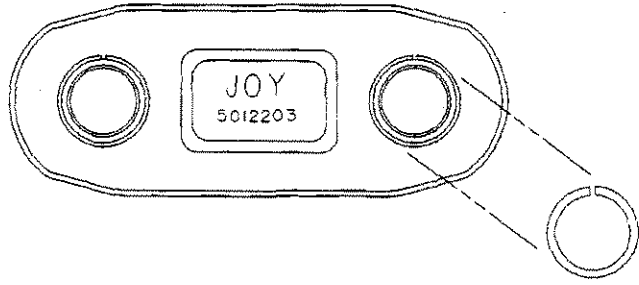
***** End of Bill of Material *****

DWG NO		00509192 0000		REV		1	
REVISIONS							
ZONE	REV	DATE	APPROVED				
A	FC00195						
B	FC00249	9 MAR 89					
C	FC00595						



NOTE:
ONE FLIGHT SECTION IS
INVERTED IN EACH CHAIN
PACKAGE FOR RETURN
DECK CLEANING PURPOSES.

05012235 CONNECTING LINK
INCLUDES TWO 01452051 0001 RETAINING RINGS



CHAIN CAN BE SHORTENED 6.5 INCHES MINIMUM BY :

1. REMOVING ONE FLIGHT SECTION (3 PITCHES).
2. ADDING ONE 1451898-0000 ROLLER LINK (1 PITCH).

05012212 0002 FLIGHT SECTION
INCLUDES 2 FLIGHTS,
2 UNIVERSALS,
AND 2 FLIGHT PINS

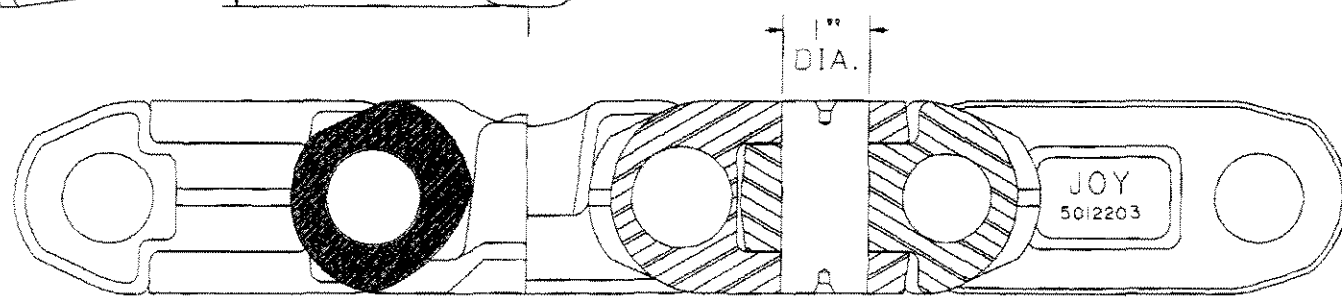
1.12" DIA.

36.38" OVERALL WIDTH

35°

13" FLIGHT SPACING

PACKAGE NUMBER	NUMBER OF FLIGHT SECTIONS	LENGTH
00509192 0048	12	13'
00509192 0052	13	14' 1"
00509192 0056	14	15' 2"
00509192 0060	15	16' 3"



SECTION A-A

THIS DRAWING AND ALL INFORMATION THEREIN IS THE PROPERTY OF AND CONFIDENTIAL TO THE JOY MANUFACTURING COMPANY. IT MUST NOT BE MADE PUBLIC OR COPIED. IT IS LOANED SUBJECT TO RETURN UPON DEMAND. IT IS NOT TO BE USED DIRECTLY OR INDIRECTLY IN ANY WAY DETRIMENTAL TO THE INTERESTS OF THE JOY MANUFACTURING COMPANY.

LITHOPRINT	YES	NO	MATERIAL	
DRAFTER			CARBURIZE	
CHECKER			HARDNESS	
ENGINEER			CLASS	SIMILAR TO
APPROVAL			JOY MANUFACTURING COMPANY FRANKLIN, PENNA. 16323	
			3 1/4 PITCH UNIVERSAL CONVEYOR CHAIN - PACKAGE & ASSEMBLY INSTRUCTIONS 36 3/8" WIDE	
CAD / CAM DRAWING			SIZE	FSCM NO.
MANUAL REVISIONS			D 75003	00509192 0000
NOT AUTHORIZED			SCALE FULL	WGT.
				SHEET 1