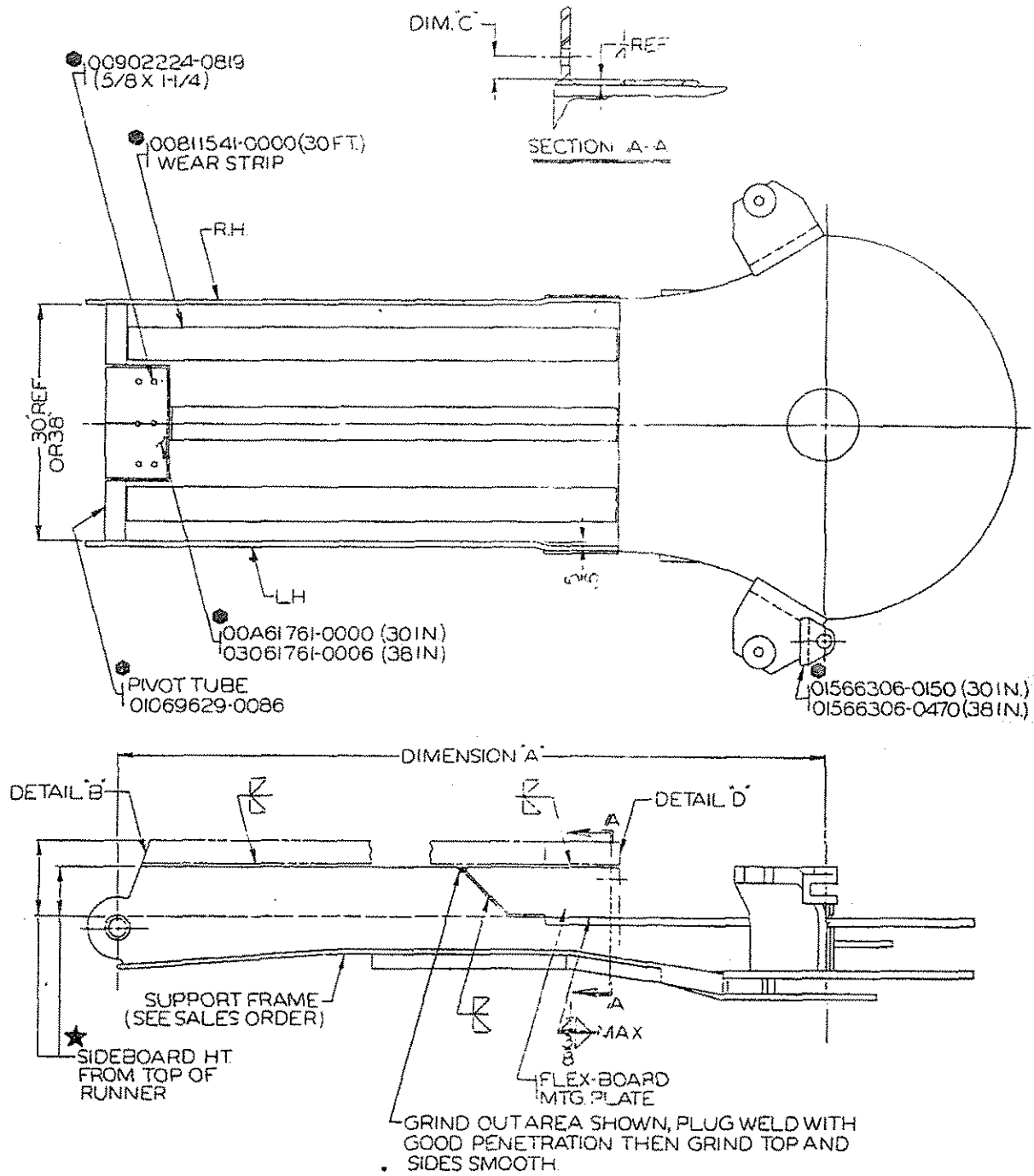


1100-18692015

B.M.	FLEX-MTG. PL. RH. & LH.	DIM. A'	SIDEBOARD HT. ☆	DETAIL B'	DIM. C'	DETAIL D'
00483003-0029	01566306-1162 01566306-1163 (8)	145 3/8 OR 88 7/8	8'		1 1/2	
00703502-0068						
00483003-0030	01566306-1168 01566306-1169 (12)	145 3/8	12'	01564265-1562	1'	
00703502-0069						
00483003-0031	01566306-1162 01566306-1163 (8)	145 3/8	12'	01564265-1563	1 1/2	01564265-1401
00703502-0070						
00483003-0032	01566306-1156 01566306-1157 (6)	88 7/8	6'		1 3/8	
00703502-0071						
00483003-0033	01566306-1156 01566306-1157 (6)	145 3/8 OR 88 7/8	8'		1 3/8	01564265-1402
00703502-0072						
00483003-0034	01566306-1168 01566306-1169 (12)	88 7/8	12"	01564265-1564	1'	
00703502-0073						
00483003-0035	01566306-1162 01566306-1163 (8)	88 7/8	12"	01564265-1083	1 1/2	01564265-1401
00703502-0074						
00483003-0036	01566306-1162 01566306-1163 (8)	88 7/8	10"	01564265-1584	1 1/2	01564265-1402
00703502-0075						
00483003-0037	01566306-1156 01566306-1157 (6)	145 3/8	6'		1 3/8	
00703502-0076						
00483003-0038	01566306-1162 01566306-1163 (8)	145 3/8	16'	01564265-1565	1 1/2	01564265-1400
00703502-0077						
00483003-0039	01566306-1156 01566306-1157 (6)	145 3/8	12"	01564265-1583	1 3/8	01564265-1505
00703502-0078						
00483003-0055	01566306-1162 01566306-1163 (8)	145 3/8	10"	01564265-1713	1 1/2	01564265-1402
00703502-0305						
00483003-0073	01566306-1156 01566306-1157 (6)	145 3/8	10"	01564265-3297	1 1/2	01564265-3298



☆ IF NECESSARY BURN TO DIMENSIONS GIVEN ON CHART
 ALL WELDS MUST BE 70,000 MINIMUM TENSILE

- SHOWN FOR SERVICE REF ONLY
- ⊙ BM FOR FACTORY USE
- ⊠ BM FOR FIELD USE

SHG ORDER FDC 3463	REVISIONS	FDC 3573 FDC 4838 FDC 7696 FDC F4186
<small>UNLESS OTHERWISE NOTED: ALL DIMENSIONS IN INCHES UNLESS OTHERWISE SHOWN LIMITED TO FRACTIONAL & 1/16" ANGULAR & 1/2" STRUCTURAL DIMENSIONS LIMITED TO ± .1125. DO NOT SCALE THIS DRAWING.</small>		

MATERIAL		PATTERN NO.		LITHOPRINT	
YES	NO			YES	NO

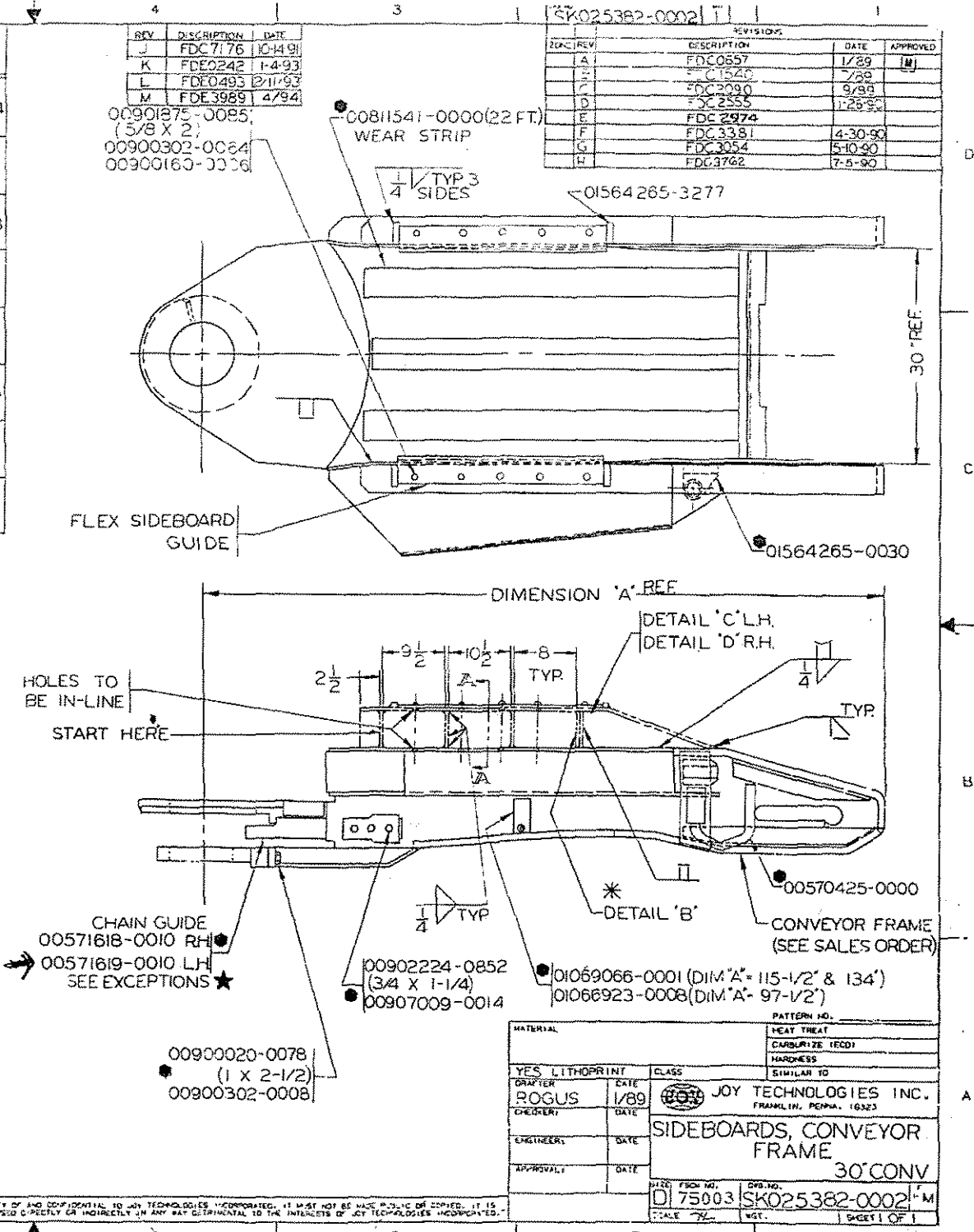
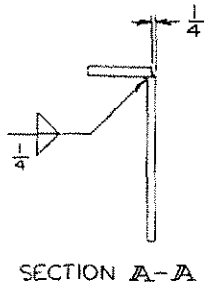
FINISH SYMBOLS	
A 4	PRECISION POLISH
B 8	FINE POLISH
C 16	COMMON POLISH
D 24	GRIND OR EQUAL
E 63	SMOOTH MACHINE
F 125	COMMON MACHINE
G 250	ROUGH MACHINE
H 500	HEAVY ROUGH
K 1000	EX HEAVY ROUGH

JOY TECHNOLOGIES INC. FRANKLIN, PENNSYLVANIA 15222		SIDEBOARDS, SUPPORT FRAME, STD PROFILE 14CMS 30 & 38 CONV	
<small>THIS DRAWING AND ALL INFORMATION THEREIN IS THE PROPERTY OF AND CONFIDENTIAL TO JOY TECHNOLOGIES INC. IT MUST NOT BE MADE PUBLIC OR COPIED. IF IT IS LOANED SUBJECT TO RETURN UPON DEMAND. IT IS NOT TO BE USED DIRECTLY OR INDIRECTLY IN ANY WAY DETRIMENTAL TO OUR INTEREST.</small>		SIMILAR TO SK02538-2002 DATE 5-21-90 SCALE 1/4" = 1"	SK025381-0011

B.M.	DIM 'A'	SIDEBOARD HT.	DETAIL 'B'	DETAIL 'C'	DETAIL 'D'	FLEX SIDEBOARD GUIDE
00483004-0006 00703500-7645	115 1/2"	6"	01564265-0599	01564265-0595	01564265-0594	01069296-0004
00483004-0007 00703500-7646	115-1/2" OR 97-1/2" OR 134"	6"				01069296-0005
00483004-0006 00703500-7647	115 1/2"	12"	01564265-0569	01564265-0593	01564265-0592	01069296-0003
00483004-0009 00703500-7648	97 1/2"	8"	01564265-0599	01564265-0625	01564265-0624	01069296-0004
00483004-0010 00703500-7649	97 1/2"	12"	01564265-0569	01564265-0568	01564265-0567	01069296-0003
00483004-0015 00703500-9517	133 3/4"	12"	01564265-0569	01564265-1252	01564265-1253	01069296-0003
00483004-0017 00703500-9587	97 1/2"	16"	* 01564265-1495	01564265-1492 01564265-1494 SEE SECTION A-A	01564265-1491 01564265-1493 SEE SECTION A-A	01069296-0008
00483004-0018 00703502-0039	133 3/4"	8"	01564265-0599	01564265-1545	01564265-1544	01069296-0004

★ USE 00571618-0004 RH / 00571619-0004 LH CHAIN GUIDES FOR THE FOLLOWING CONVEYOR FRAMES:
00507090-0153 / 0155 / 0161 / 0163 / 0182 / 0200 / 0205 / 2000 / 2001 / 2016 / 2017

* THIS COMBINATION HAS ONLY 3 "B" DETAILS PER SIDE
● SHOWN FOR SERVICE REF ONLY.
ALL WELDS MUST BE MINIMUM 70,000 TENSILE.



MATERIAL		HEAT TREAT	
YES	LITHO PRINT	CLASS	SIMILAR TO
DRAYER	DATE	JOY TECHNOLOGIES INC.	FRANKLIN, PENNA. 16823
ENGINEER	DATE	SIDEBOARDS, CONVEYOR FRAME	
APPROVAL	DATE	30' CONV	
MATERIAL		PATTERN NO.	
0175003		01066923-0008 (DIM 'A' - 97-1/2')	
SCALE 1/2"		Dwg. No. SK025382-0002-M	
		PAGE 1 OF 1	

UNLESS OTHERWISE NOTED, ALL DIMENSIONS IN INCHES; DIMENSIONS LIMITED TO FRACTIONAL 1/16", ANGULAR SIZES; SECTION A-A DIMENSIONS LIMITED TO 1/4". DO NOT SCALE THIS DRAWING.
THIS DRAWING AND ALL INFORMATION THEREIN IS THE PROPERTY OF AND CONFIDENTIAL TO JOY TECHNOLOGIES INCORPORATED. IT IS NOT TO BE REPRODUCED OR TRANSMITTED IN ANY FORM OR BY ANY MEANS, ELECTRONIC OR MECHANICAL, INCLUDING PHOTOCOPYING, RECORDING, OR BY ANY INFORMATION STORAGE AND RETRIEVAL SYSTEM, WITHOUT THE WRITTEN PERMISSION OF JOY TECHNOLOGIES INCORPORATED.

EIERD006

BILL OF MATERIAL

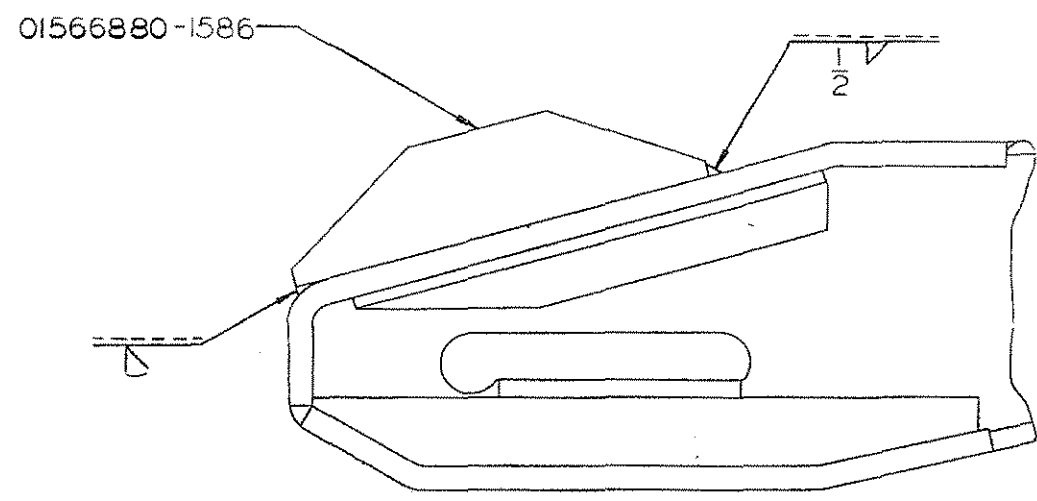
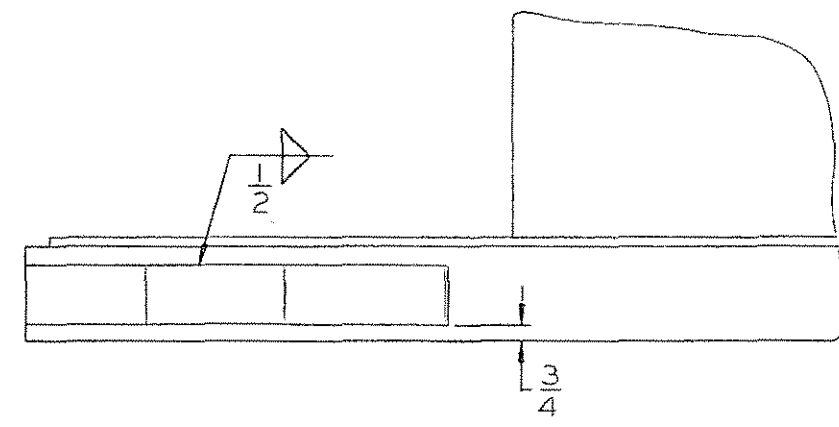
DATE 06/21/94

PAGE 1

B/M NUMBER	DESCRIPTION	REFERENCE	DATE
00703500 7648	SIDEBOARDS	SK025382 0002	01
		FDC0657	02/10/89
		FDC1540	07/28/89
		FDE0493	02/15/93
		FDE3989	04/28/94

QTY	PART NUMBER	DESCRIPTION	REF NO.
10	00900160 0006	NUT, HEX, GR. 2, 5/8-11	
10	00900302 0064	WASHER, LOCK, 5/8	
10	00901875 0085	BOLT, CARRIAGE, GR. 5, 5/8 X 2	
2	01069296 0004	GUIDE	
8	01564265 0599	DETAIL	
1	01564265 0624	DETAIL	
1	01564265 0625	DETAIL	
4	01564265 3277	DETAIL	

***** END OF BM PRINT *****



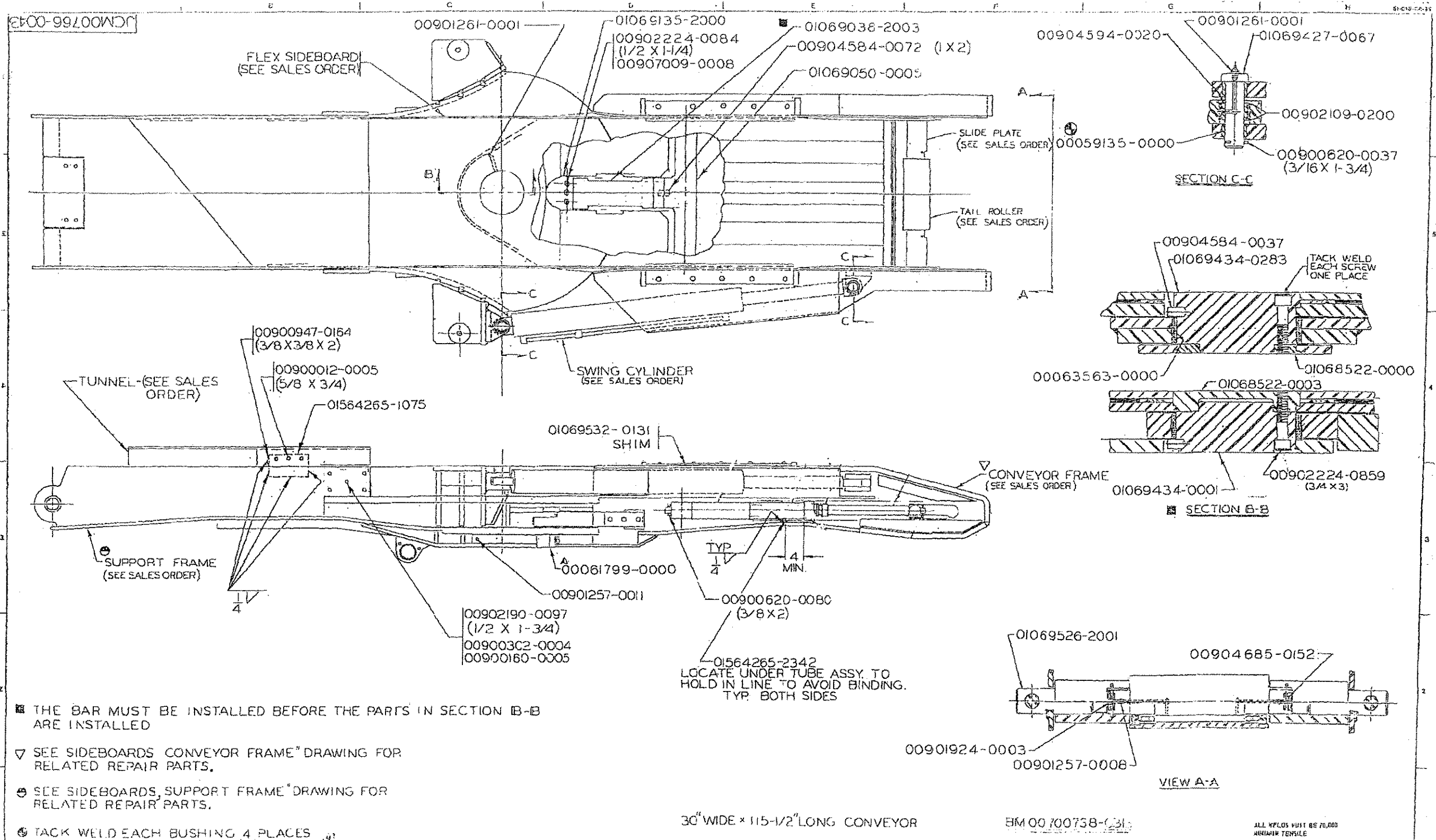
ALL WELDS 70,000 P.S.I. MIN. T.S.

FACTORY
00483034-0001

<p>This drawing and all information therein is the property of the JOY MANUFACTURING CO. It is confidential and must not be made public or copied. It is loaned subject to return upon demand. It is not to be used directly or indirectly in any way detrimental to our interest.</p>	<p>JOY MANUFACTURING CO. PLANT LOCATION AS INDICATED BELOW</p>		<p>PARTS REQD TO ADD ROOF STOP TO REAR CONVEYOR 14CM 9310</p>	
	<p>BIRMINGHAM, AL</p> <p>BUFFALO, NY</p> <p>CAMBRIDGE, ONT. CANADA</p> <p>CLAREMONT, NH</p> <p>E. KILBUCK, SCOTLAND</p> <p>FRANKLIN, PA</p>	<p>LA GRANGE, IL</p> <p>MICHIGAN CITY, IN</p> <p>NEW PHILADELPHIA, OH</p>	<p>SIMILAR TO: 0105</p> <p>SUPERSEDES:</p> <p>SUPERSEDED BY:</p> <p>REPLACES:</p> <p>REPLACED BY:</p>	<p>DRAWN BY: JMM</p> <p>TR:</p> <p>CHK:</p> <p>APPD:</p>

E. G. FDE6461
DATE

REVISIONS



- ☒ THE BAR MUST BE INSTALLED BEFORE THE PARTS IN SECTION B-B ARE INSTALLED
- ▽ SEE SIDEBOARDS CONVEYOR FRAME DRAWING FOR RELATED REPAIR PARTS.
- ⊕ SEE SIDEBOARDS SUPPORT FRAME DRAWING FOR RELATED REPAIR PARTS.
- ⊕ TACK WELD EACH BUSHING 4 PLACES

30" WIDE x 115-1/2" LONG CONVEYOR

BM 00 700738-031

ALL XPLS MUST BE 70,000 ANNIHR TENSILE

THIS ORDER FDC 5 UNLESS OTHERWISE NOTED ALL DIMEN SIONS ARE IN INCHES UNLESS NOTED OTHERWISE ANGULAR & SURF. STRUCTURAL DIMEN UNLESS NOTED TO THIS DO NOT SCALE THIS DRAWING	REVISIONS 1. 00901261-0001 2. 01069135-2000 3. 00902224-0084 (1/2 X 1-1/4) 4. 00907009-0008 5. 01069038-2003 6. 00904584-0072 (1 X 2) 7. 01069050-0005 8. 00904594-0020 9. 00901261-0001 10. 01069427-0067 11. 00902109-0200 12. 00059135-0000 13. 00900620-0037 (3/16 X 1-3/4) 14. 00904584-0037 15. 01069434-0283 16. 01068522-0000 17. 00063563-0000 18. 01068522-0003 19. 01069434-0001 20. 00902224-0859 (3/4 X 3) 21. 01069526-2001 22. 00904685-0152 23. 00901924-0003 24. 00901257-0008	FINISH SYMBOLS 1. 125 CONTOUR MACHINE 2. 250 CONTOUR MACHINE 3. 500 CONTOUR MACHINE 4. 1000 CONTOUR MACHINE 5. 1500 CONTOUR MACHINE 6. 2000 CONTOUR MACHINE 7. 2500 CONTOUR MACHINE 8. 3000 CONTOUR MACHINE 9. 3500 CONTOUR MACHINE 10. 4000 CONTOUR MACHINE 11. 4500 CONTOUR MACHINE 12. 5000 CONTOUR MACHINE 13. 5500 CONTOUR MACHINE 14. 6000 CONTOUR MACHINE 15. 6500 CONTOUR MACHINE 16. 7000 CONTOUR MACHINE 17. 7500 CONTOUR MACHINE 18. 8000 CONTOUR MACHINE 19. 8500 CONTOUR MACHINE 20. 9000 CONTOUR MACHINE 21. 9500 CONTOUR MACHINE 22. 10000 CONTOUR MACHINE	JOY TECHNOLOGIES INC. FRANKLIN, PENNSYLVANIA 15035	CONVEYOR AND SUPPORT FRAMES MOUNTING
	MATERIAL HEAT TREAT HARDNESS CAPABILITY CODE	PATTERN NO LITHO PRINT YES <input checked="" type="checkbox"/> NO <input type="checkbox"/>	THIS DRAWING AND ALL INFORMATION THEREON IS THE PROPERTY OF JOY TECHNOLOGIES INC. IT IS TO BE KEPT UNLESS OTHERWISE SPECIFIED IN WRITING. IT IS TO BE RETURNED TO JOY TECHNOLOGIES INC. IF IT IS TO BE USED FOR ANY OTHER PROJECT OR FOR ANY OTHER PURPOSE.	SUPPLIER TO JOY TECHNOLOGIES INC. PART NO. 00901261-0001 SCALE: 1:1

B/M Number	Description	Reference	Date	Sheet
00700738-0313	MCOUNTING, FRAME, CONVEYOR AND	JCM00765-0043 FDF6806	03/12/1998	01

Qty	UOM	Part Number	Description	Ref No
2	EA	00002852-0000	SLEEVE, ADJ., SPRING, TAKE-UP	10
4	EA	00059135-0000	BUSHING	20
3	EA	00061799-0000	SHIM	30
2	EA	00063563-0000	BUSHING	40
9	EA	00900012-0005	SCREW, CAP, GR. 5, 5/8-11 X 3/4	50
10	EA	00900160-0005	NUT, HEX, GR. 2, 1/2-13	60
10	EA	00900302-0004	WASHER, LOCK, 1/2	70
2	EA	00900620-0037	PIN, COTTER, 3/16 X 1-3/4	80
4	EA	00900620-0080	PIN, COTTER, 3/8 X 2	90
3	EA	00900947-0164	KEY, 3/8 X 3/8 X 2	100
2	EA	00901257-0008	NIPPLE, GREASE 1/4" NPT	110
1	EA	00901257-0011	fitting, grease, short, extra 1/4 ptf	120
3	EA	00901261-0001	GREASE FITTING	130
2	EA	00901924-0003	PLUG, HEX SOC, 1/4" NPT	140
4	EA	00902109-0200	RING, RETAINING, INTERNAL, AXIAL	150
10	EA	00902190-0097	SCREW, CAP, GR. 8, 1/2-13 X 1-3/4	160
3	EA	00902224-0084	SCREW, CAP, 1/2-13 X 1-1/4	170
2	EA	00902224-0858	SCREW, CAP, 3/4-10 X 2-3/4	180
6	EA	00902224-0859	SCREW, CAP, 3/4-10 X 3	190
2	EA	00904584-0037	PIN, DOWEL, 5/8 X 1"	200
1	EA	00904584-0072	PIN, DOWEL, 1 X 2	210
2	EA	00904594-0020	BUSHING, ASSEMBLED, PLAIN	220
2	EA	00904685-0152	PIN, SPRING, .500 X 3.000	230
3	EA	00907009-0008	WIRE, LOCKING, 11/16	240
1	EA	01068522-0000	PLATE	250
1	EA	01068522-0003	PLATE	260
1	EA	01069038-2003	DETAIL	270
1	EA	01069050-0005	BEAM, STRUCTURAL	280
1	EA	01069135-2000	CAM	290
2	EA	01069427-0067	PIN, HEADED	300
1	EA	01069434-0001	PIN, SPECIAL	310
1	EA	01069434-0283	PIN, SPECIAL	320
2	EA	01069484-0014	ROD	330
2	EA	01069484-0022	ROD	340
2	EA	01069526-2001	SHAFT	350
2	EA	01069532-0131	SHIM, RECTANGLE	360
3	EA	01564265-1075	DETAIL	370
2	EA	01564265-2342	DETAIL	380
2	EA	03069629-0106	TUBE	390

***** End of Bill of Material *****

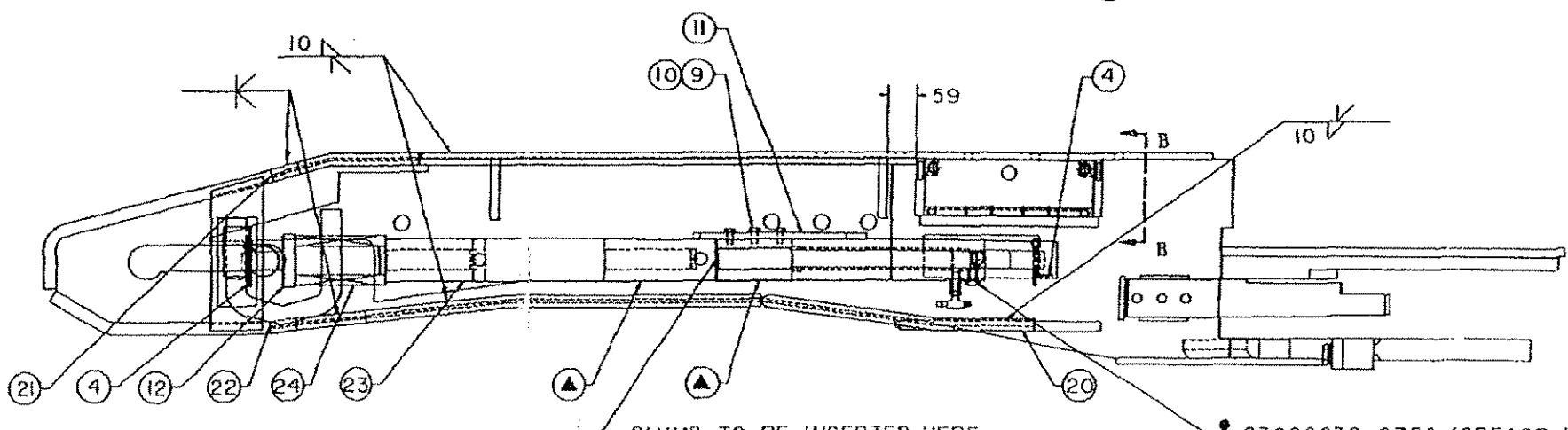
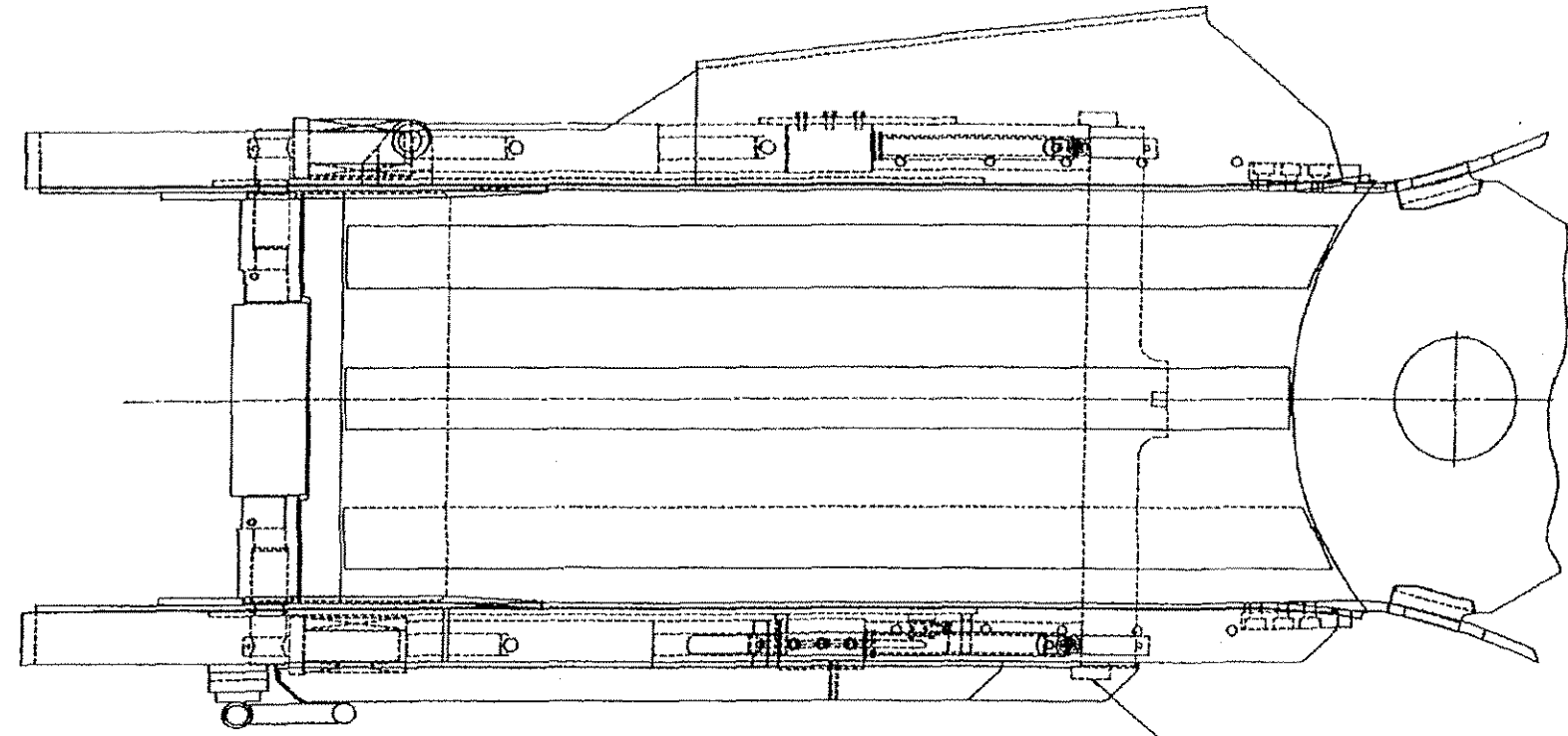
DO NOT SCALE

WELDING STANDARD IS ISO METHOD A

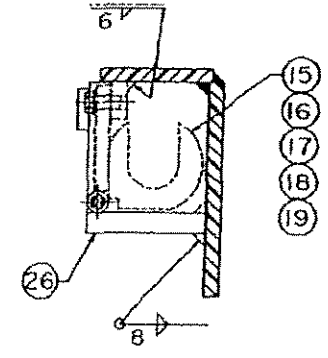
PROJECTION THIRD ANGLE

B.M. 00720513-0023

1	00533583-0004	2	VALVE RELIEF
2	00570438-0005	2	CYLINDER, TAKE-UP
3	00900259-0013	8	SCR.MACH.NO. 6
4	00900620-0080	4	PIN, COTTER (3/8 X 2)
5	00901086-0002	2	TEE, 1/8 NPTF
6	00901158-0001	2	BUSHING
7	00901261-0005	2	FITTING
8	00910623-0006	2	ADAPT.(3/8"O"X1/4NPTF
9	00925441-1219	6	SCREW, CAP, (M12 X 30)
10	00925498-1200	6	WASHER, FLAT (M12)
11	01069367-2222	2	KEEPER
12	01069428-0102	2	PIN, SHOULDER
13	01069448-0232	2	PLATE
14	01069448-3367	1	PLATE
15	01069533-0452	8	SHIM (3 MM)
16	01069533-0453	6	SHIM (6 MM)
17	01069533-0454	6	SHIM (8 MM)
18	01069533-0455	2	SHIM (13 MM)
19	01069533-0456	8	SHIM (25 MM)
20	01069563-5285	1	PLATE
21	01069563-5310	1	PLATE
22	01069563-5311	1	PLATE
23	01069566-0512	2	SPACER, SPECIAL
24	01069585-0090	2	SPRING
25	01566308-7883	2	DETAIL
26	03069196-1349	1	COVER



(SHIMS TO BE KEPT INSIDE OF COVER WHEN NOT IN USE)



SECTION B-B

• AFTER INSTALLATION OF SHIMS, GREASE PRESSURE TO BE RELIEVED BY UNSCREWING 03069230-0350 FITTING.

▲ SHIMS TO BE INSERTED HERE AS NEEDED TO MAINTAIN CHAIN TENSION

● 03069230-0350 (GREASE INLET)
▲ (REPAIR REF ONLY)

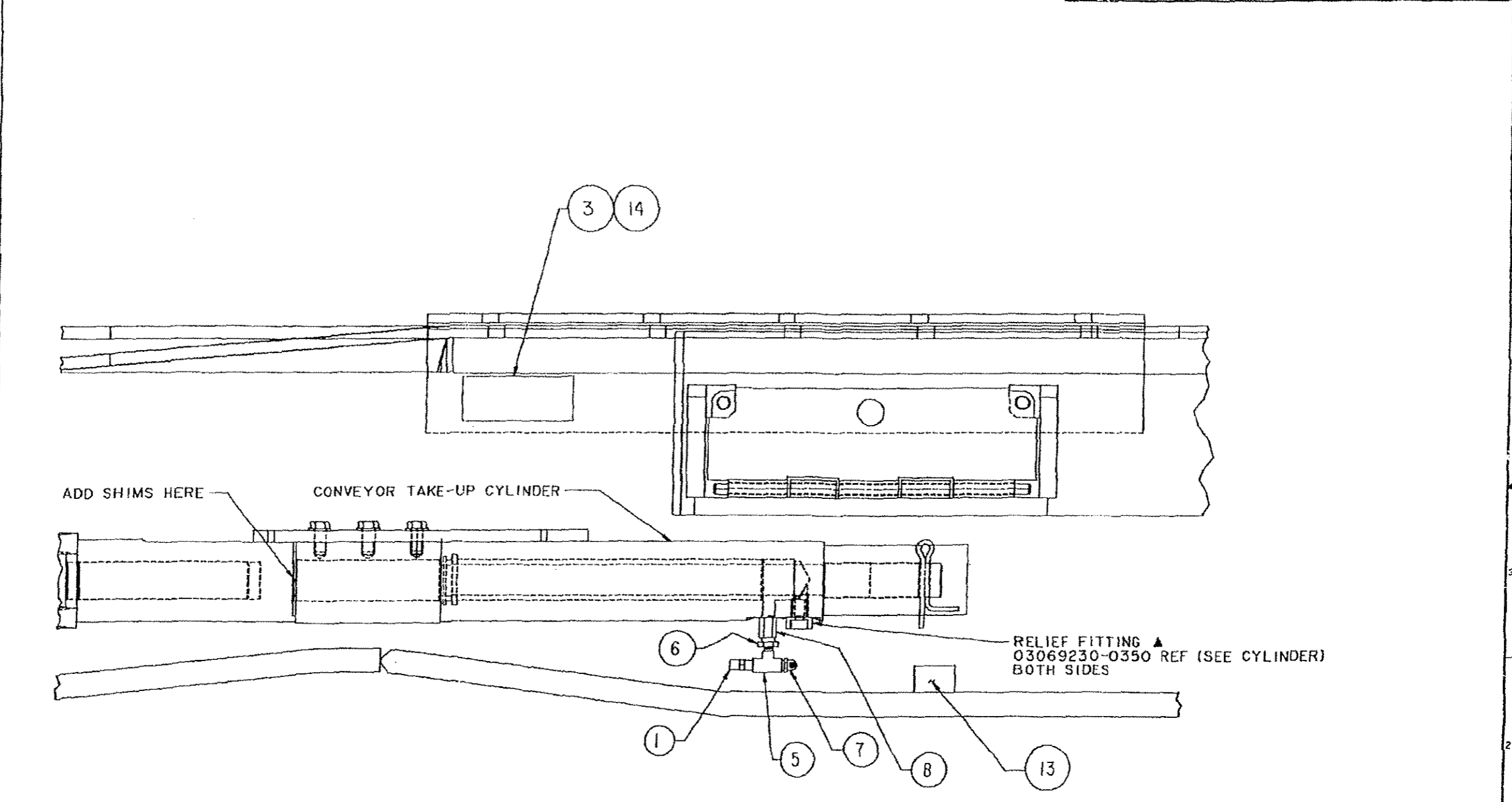
ALL WELDS MUST BE 483 MPA MIN. TENSILE

▲ THESE PARTS ARE PART OF THE GREASE CYLINDER

2094MM (115-1/2) LONG CONVEYOR

B.M. 00720513-0023

CONFIDENTIAL DATE ISSUED: 005429 E.O. CHANGE: 005429	TOLERANCE TO BE AS SPECIFIED BELOW UNLESS OTHERWISE STATED ALL DIMENSIONS IN MILLIMETERS UNLESS OTHERWISE STATED DIMENSIONS IN PARENTHESIS ARE DIMENSIONS IN INCHES	FINISH SYMBOLS SURFACE PREPARATION: 1. 2. 3. 4. 5. 6. 7. 8. 9. 10. 11. 12. 13. 14. 15. 16. 17. 18. 19. 20. 21. 22. 23. 24. 25. 26. 27. 28. 29. 30. 31. 32. 33. 34. 35. 36. 37. 38. 39. 40. 41. 42. 43. 44. 45. 46. 47. 48. 49. 50. 51. 52. 53. 54. 55. 56. 57. 58. 59. 60. 61. 62. 63. 64. 65. 66. 67. 68. 69. 70. 71. 72. 73. 74. 75. 76. 77. 78. 79. 80. 81. 82. 83. 84. 85. 86. 87. 88. 89. 90. 91. 92. 93. 94. 95. 96. 97. 98. 99. 100.	D.WALKER 02/18/80 PLANT LOCATION: FRANKLIN, PENNSYLVANIA TITLE: MOUNTING, CONVEYOR GREASE TAKE-UP SCALE: 1:1 CLASS: 1 PCM SK025647-0018 SHT. 1 OF 2
--	---	--	---

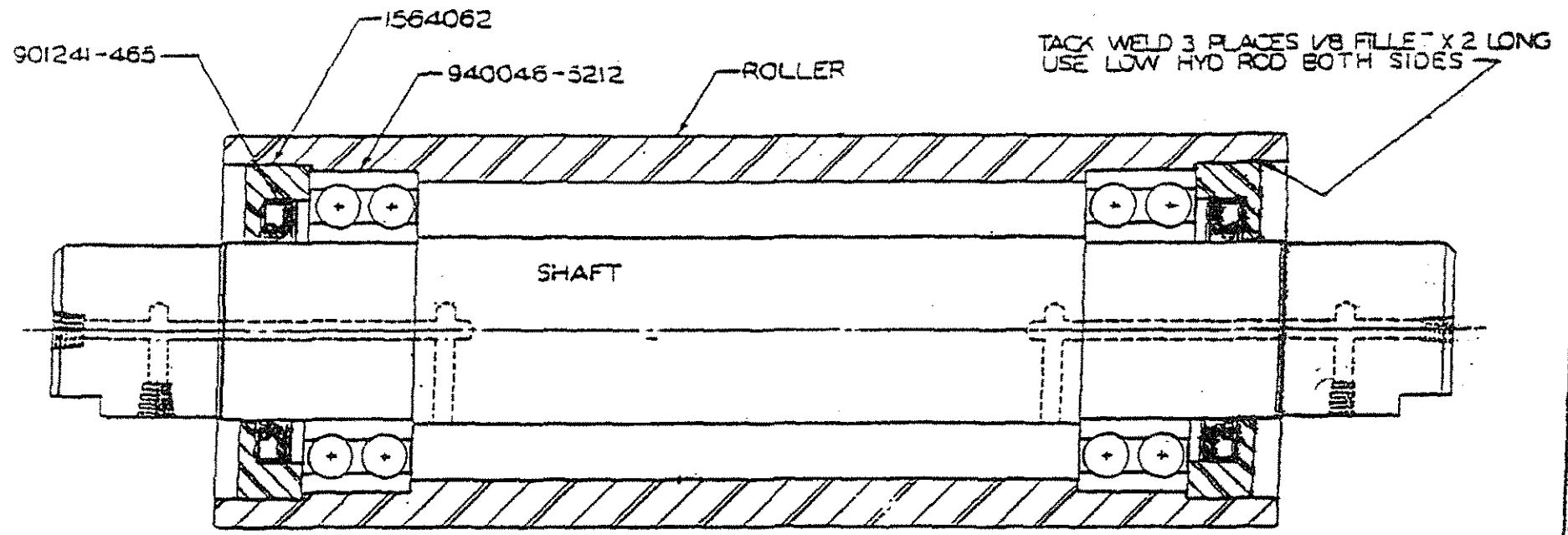


BM 00720513-0022

EVS ORDER FDG824		E.O. CHANGE		DATE ISSUED		MATERIAL		HEAT TREAT		PATTERN NO.		DWG. DIMS. IMPERIAL		TOLERANCE TO BE AS SPECIFIED BELOW UNLESS OTHERWISE STATED		FINISH SYMBOLS				D. WALKER DATE: 05-16-90		PLANT LOCATION FRANKLIN PENNSYLVANIA	
CONFIDENTIAL		NO <input checked="" type="checkbox"/> YES <input type="checkbox"/>		ALL DIMENSIONS IN MILLIMETERS UNLESS OTHERWISE STATED		MACHINING		FABRICATION PLATE & STRUCTURAL WORK		CASTINGS		MACHINING		FABRICATION PLATE & STRUCTURAL WORK		CASTINGS		DESCRIPTION		DATE		TITLE	
1.0mm		UP TO 30mm 1.0mm		30 TO 100mm 0.2mm		100 TO 200mm 0.3mm		200 TO 300mm 0.4mm		OVER 300mm 0.5mm		1.0mm		1.2mm		1.5mm		1.0mm		1.2mm		1.5mm	
ALL DIMENSIONS IN INCHES UNLESS OTHERWISE STATED		MACHINING		FABRICATION PLATE & STRUCTURAL WORK		CASTINGS		MACHINING		FABRICATION PLATE & STRUCTURAL WORK		CASTINGS		MACHINING		FABRICATION PLATE & STRUCTURAL WORK		CASTINGS		DESCRIPTION		DATE	
1.0mm		UP TO 30mm 1.0mm		30 TO 100mm 0.2mm		100 TO 200mm 0.3mm		200 TO 300mm 0.4mm		OVER 300mm 0.5mm		1.0mm		1.2mm		1.5mm		1.0mm		1.2mm		1.5mm	
MATERIAL		CONFIDENTIAL		NO <input checked="" type="checkbox"/> YES <input type="checkbox"/>		ALL DIMENSIONS IN MILLIMETERS UNLESS OTHERWISE STATED		MACHINING		FABRICATION PLATE & STRUCTURAL WORK		CASTINGS		MACHINING		FABRICATION PLATE & STRUCTURAL WORK		CASTINGS		DESCRIPTION		DATE	
HEAT TREAT		PATTERN NO.		DWG. DIMS. IMPERIAL		FRACTIONAL DIMENSIONS UP TO 12" 1/64 BY 12" 1/32		UP TO 12" 1/32		12" TO 24" 1/16		OVER 24" 1/8		1.0mm		1.2mm		1.5mm		1.0mm		1.2mm	
HARDNESS		CARBURIZE (ECO)		NO <input checked="" type="checkbox"/> YES <input type="checkbox"/>		ALL DIMENSIONS IN INCHES UNLESS OTHERWISE STATED		MACHINING		FABRICATION PLATE & STRUCTURAL WORK		CASTINGS		MACHINING		FABRICATION PLATE & STRUCTURAL WORK		CASTINGS		DESCRIPTION		DATE	
1.0mm		UP TO 30mm 1.0mm		30 TO 100mm 0.2mm		100 TO 200mm 0.3mm		200 TO 300mm 0.4mm		OVER 300mm 0.5mm		1.0mm		1.2mm		1.5mm		1.0mm		1.2mm		1.5mm	
MATERIAL		CONFIDENTIAL		NO <input checked="" type="checkbox"/> YES <input type="checkbox"/>		ALL DIMENSIONS IN MILLIMETERS UNLESS OTHERWISE STATED		MACHINING		FABRICATION PLATE & STRUCTURAL WORK		CASTINGS		MACHINING		FABRICATION PLATE & STRUCTURAL WORK		CASTINGS		DESCRIPTION		DATE	
HEAT TREAT		PATTERN NO.		DWG. DIMS. IMPERIAL		FRACTIONAL DIMENSIONS UP TO 12" 1/64 BY 12" 1/32		UP TO 12" 1/32		12" TO 24" 1/16		OVER 24" 1/8		1.0mm		1.2mm		1.5mm		1.0mm		1.2mm	
HARDNESS		CARBURIZE (ECO)		NO <input checked="" type="checkbox"/> YES <input type="checkbox"/>		ALL DIMENSIONS IN INCHES UNLESS OTHERWISE STATED		MACHINING		FABRICATION PLATE & STRUCTURAL WORK		CASTINGS		MACHINING		FABRICATION PLATE & STRUCTURAL WORK		CASTINGS		DESCRIPTION		DATE	
1.0mm		UP TO 30mm 1.0mm		30 TO 100mm 0.2mm		100 TO 200mm 0.3mm		200 TO 300mm 0.4mm		OVER 300mm 0.5mm		1.0mm		1.2mm		1.5mm		1.0mm		1.2mm		1.5mm	
MATERIAL		CONFIDENTIAL		NO <input checked="" type="checkbox"/> YES <input type="checkbox"/>		ALL DIMENSIONS IN MILLIMETERS UNLESS OTHERWISE STATED		MACHINING		FABRICATION PLATE & STRUCTURAL WORK		CASTINGS		MACHINING		FABRICATION PLATE & STRUCTURAL WORK		CASTINGS		DESCRIPTION		DATE	
HEAT TREAT		PATTERN NO.		DWG. DIMS. IMPERIAL		FRACTIONAL DIMENSIONS UP TO 12" 1/64 BY 12" 1/32		UP TO 12" 1/32		12" TO 24" 1/16		OVER 24" 1/8		1.0mm		1.2mm		1.5mm		1.0mm		1.2mm	
HARDNESS		CARBURIZE (ECO)		NO <input checked="" type="checkbox"/> YES <input type="checkbox"/>		ALL DIMENSIONS IN INCHES UNLESS OTHERWISE STATED		MACHINING		FABRICATION PLATE & STRUCTURAL WORK		CASTINGS		MACHINING		FABRICATION PLATE & STRUCTURAL WORK		CASTINGS		DESCRIPTION		DATE	
1.0mm		UP TO 30mm 1.0mm		30 TO 100mm 0.2mm		100 TO 200mm 0.3mm		200 TO 300mm 0.4mm		OVER 300mm 0.5mm		1.0mm		1.2mm		1.5mm		1.0mm		1.2mm		1.5mm	

SCALE: N.T.S. CLASS: 14CM
TITLE: MOUNTING CONVEYOR
DWO. SK025547-0015
SHT. 2 OF 2

531840-4



531840-4	1566799	1069527-92
ROLLER ASSY	ROLLER	SHAFT

JOY MANUFACTURING CO. PLANT LOCATION AS INDICATED BELOW		ROLLER ASSEMBLY (4)	
DATE: _____ DRAWN BY: _____ CHECKED BY: _____ APPROVED BY: _____		531840-4	



JOY MANUFACTURING CO.

BILL OF MATERIAL

DRAWING NO.

BILL OF MAT. NO.

SHEET NO. 1 OF 1

531840-4

531840-4

NAME ROLLER (ASSEMBLY)

ORDER NO.

ISSUED:		JUNE 20, 1973		FBL379	

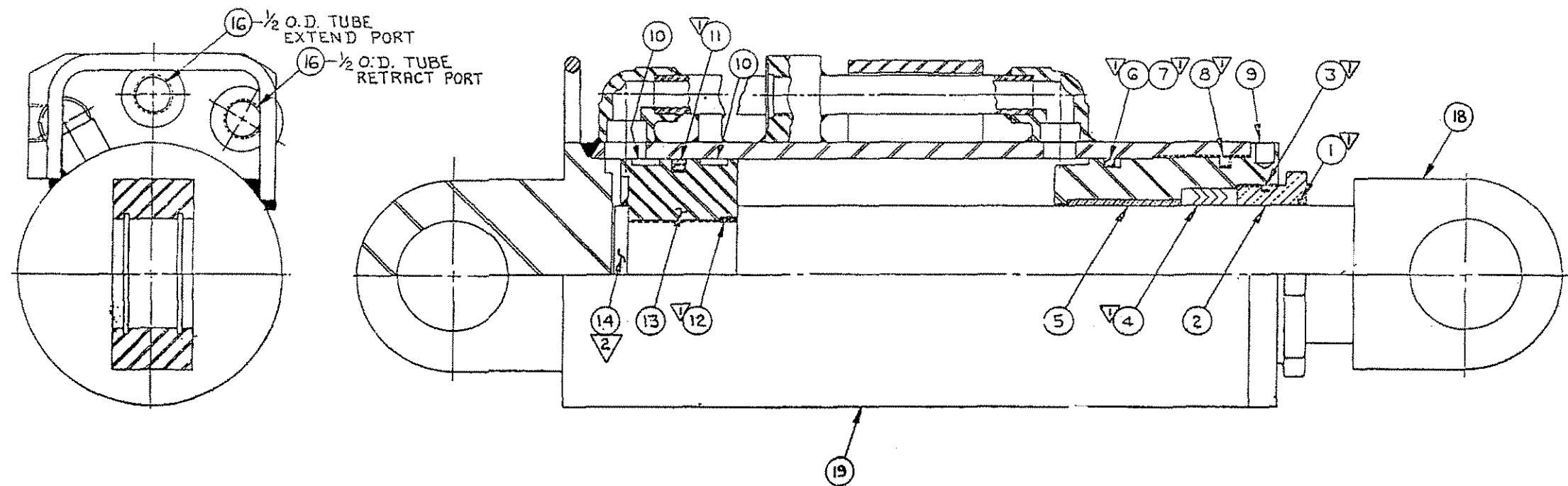
QUANTITY		PART NUMBER	NAME OF PART	COST PER PIECE	TOTAL AMOUNT
PER ORDER	PER UNIT				
	1	1069527-92	SHAFT		
	2	1564062	CARRIER		
	1	1566799	ROLLER		
	2	901241-465	SEAL		
	2	940046-5212	BEARING		

DWG. NO. 16ZE-07L00500

DO NOT SCALE

WELDING STANDARD IS ISO METHOD A

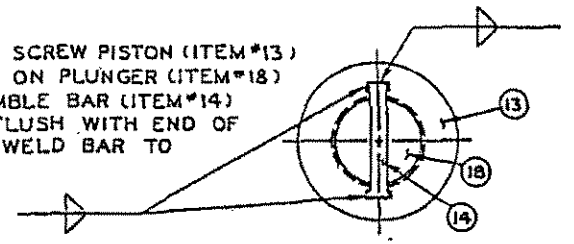
PROJECTION THIRD ANGLE



CYLINDER	RELEASE	REVISIONS			
00500140-3297	FCF980	FCN125	FDC3421	FDC3049	FDE4543
00500140-3339	FCF980	FCN125	FDC3049	FDE4543	

NOTES:
 ▽ SEAL KIT
 JOY TECH. NO. 0050G205-1815

2 ASS'Y NOTE: SCREW PISTON (ITEM #13)
 DOWN TIGHT ON PLUNGER (ITEM #18)
 IN PLACE, FLUSH WITH END OF
 PLUNGER & WELD BAR TO
 PISTON.



MAX OPERATING PRESSURE = 2000 PSI.

ENG ORDER FCF980 DATE ISSUED:	REVISIONS FCN125 FDC3421 FDC3049 FDE4543	TOLERANCE TO BE AS SPECIFIED BELOW UNLESS OTHERWISE STATED ALL DIMENSIONS IN MILLIMETERS UNLESS OTHERWISE STATED MACHINING: FABRICATION PLATE & STRUCTURAL WORK CASTINGS	FINISH SYMBOLS 1: 125 NB 3.2 COMMON MACHINE 2: 250 NB 6.3 ROUGH MACHINE 3: 500 NB 12.5 HEAVY ROUGH 4: 1000 NB 25 EX HEAVY ROUGH	DR: SCHMIDT DATE: 10 AUG 95 PLANT LOCATION: FRANKLIN, PA.
MATERIAL: HEAT TREAT: HARDNESS: CARBURIZE (ECD):	PATTERN NO: DWG. DIMS: IMPERIAL <input checked="" type="checkbox"/> METRIC <input type="checkbox"/>	ALL DIMENSIONS IN INCHES UNLESS OTHERWISE STATED MACHINING: FABRICATION PLATE & STRUCTURAL WORK CASTINGS	THIS DRAWING AND ALL INFORMATION THEREIN IS THE PROPERTY OF AND CONFIDENTIAL TO JOY TECHNOLOGIES INC. IT MUST NOT BE MADE PUBLIC OR COPIED. IT IS LOANED SUBJECT TO RETURN UPON DEMAND. IS NOT TO BE USED DIRECTLY OR INDIRECTLY IN ANY WAY DETRIMENTAL TO OUR INTEREST.	TITLE: CYLINDER, CONV SWING SCALE: CLASS: MINERS DWG. NO. 00500140-3297

EIERD006

BILL OF MATERIAL

DATE 11/02/94

PAGE 001

B/M NUMBER

DESCRIPTION

INCHES

REFERENCE

DATE

00500140 3297

CYLINDER

00500140 3297

01

REPL 00500140 1297 REPL BY

FCF0980

01/50/70

(ITEMS 1, 3, 4, 6, 7, 8, 11 AND 12 ARE

FDE4543

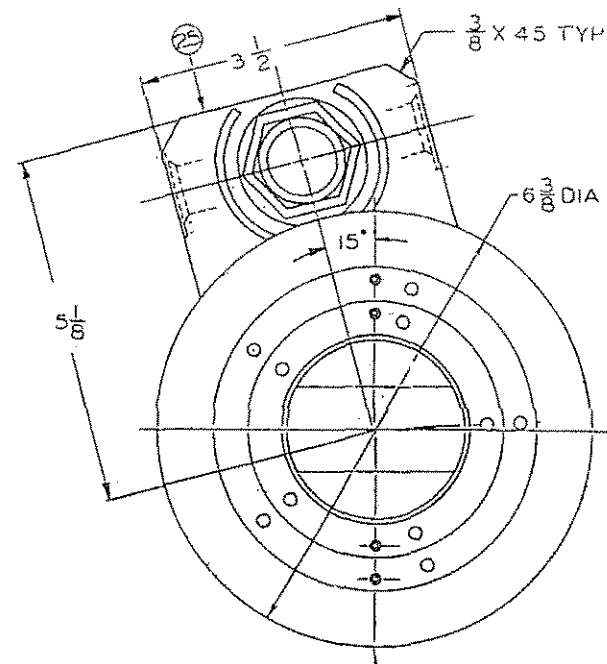
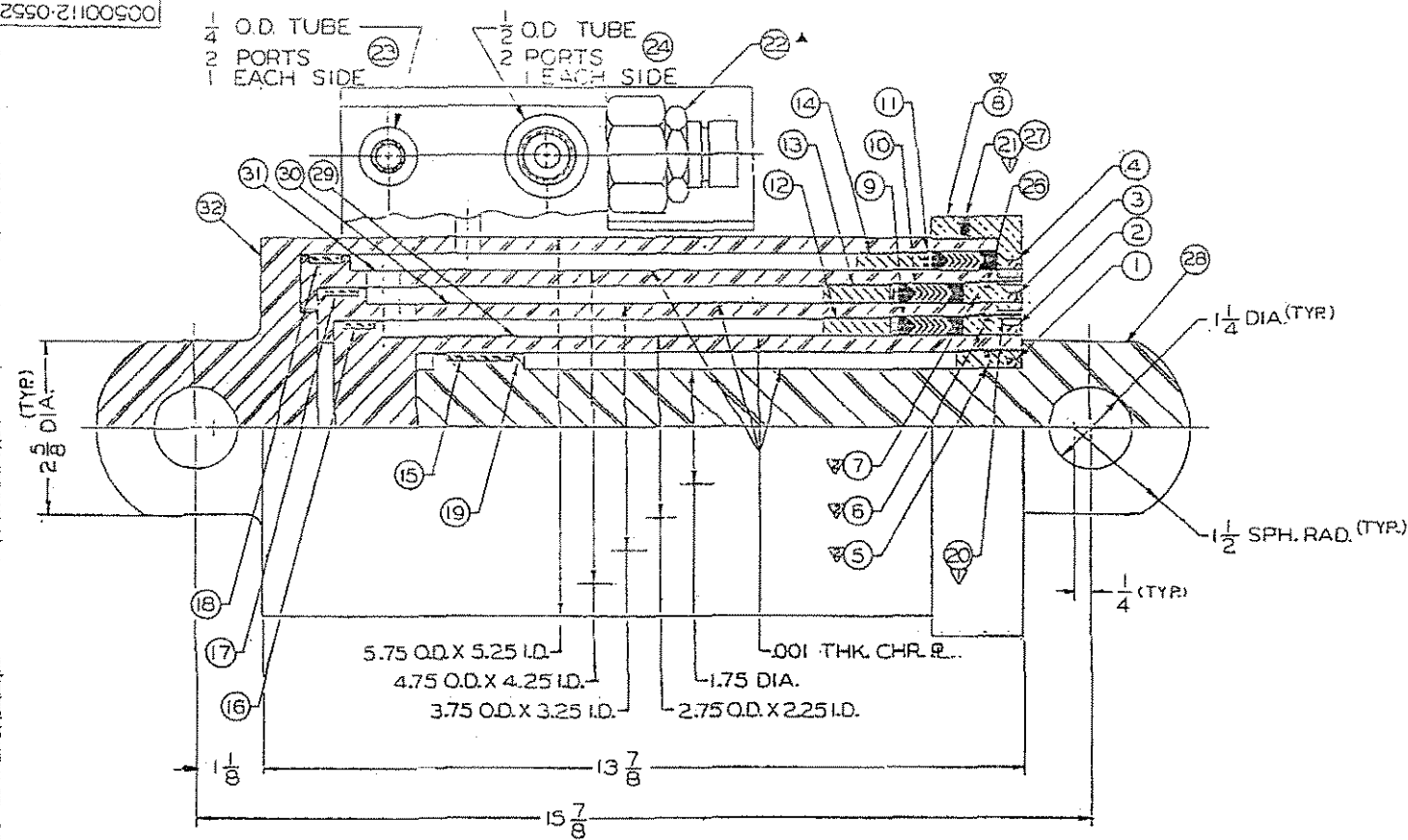
09/06/94

AVAILABLE AS SEAL KIT 00506205-1815)

QTY	PART NUMBER	DESCRIPTION	REF NO
1	03190338 0017	WIPER	001
1	03190014 0088	GLAND	002
1	03190154 0046	PLUG, NYLOC	003
1	03190122 0193	PACKING	004
1	03190455 0057	RING, WEAR	005
1	00908388 0344	RING, BACK-UP	006
1	00907865 0344	O-RING (1/8 X 3-7/8" I.D.)	007
1	03190154 0047	PLUG, NYLON	008
1	03190038 0096	HEAD	009
2	03190455 0058	RING, WEAR	010
1	03190218 0067	SEAL, PISTON	011
2	00910656 0224	O-RING	012
1	03190139 0186	PISTON	013
1	00900947 1697	KEY, 1/2 X 1/4 X 2-1/2	014
1	00906893 0102	CLOSURES, PROTECTIVE	016
1	03189949 0278	CYLINDER, MAIN	018
1	03190194 0518	ROD, ASSEMBLED	019

***** END OF BM PRINT *****

00500112-0552



00500112-0552	28"	8.81"	9.88	9.19"	8.94
CYLINDER ELEV. CONV.	TOTAL STROKE	PULLOUT	STAGE 1	STAGE 2	STAGE 3

▽ APPLY 242-LOCTITE TO SET SCREWS
 ▽ APPLY LOCTITE 262 TO THREADS OF PACKING NUTS.
 CYLINDER IS TESTED AT 3000 P.S.I.
 MINIMUM OPERATING PRESSURE 2000.P.S.I.
 PACKING NUT REPLACEMENT KITS.
 00506205-1397 ITEMS 1.5,26.
 00506205-1396 ITEMS 2.6,20,26.
 00506205-1395 ITEMS 3.7,20,26.
 00506205-1394 ITEMS 4.8,21.

JOY MANUFACTURING CO.
 CERTIFIED CYLINDER
 THIS CYLINDER MEETS ANTIHYP STANDARDS ESTABLISHED BY THE HYDRAULIC INSTITUTE (H.I.) AND IS APPROVED BY THE HYDRAULIC INSTITUTE (H.I.) FOR USE IN HYDRAULIC SYSTEMS. TO OBTAIN HYDRAULIC CERTIFICATION USE JOY REPLACEMENT PARTS OR EQUIV.

ITEMS 1,2,3,4 AND 9,10,11 AND 15,16,17,18
 MAY BE PURCHASED AS A SEAL
 REPAIR KIT, 00506205-1882.

LITHOPRINT THIS DRAWING

▲ SPECIAL NOTE:
 PILOT OPERATED RELIEF VALVE HAS ATMOSPHERIC RELIEF BUILT INTO IT.

JOY MANUFACTURING CO. PLANT LOCATION AS INDICATED BELOW		CYLINDER, ELEVATE, CONVEYOR	
BIRMINGHAM, AL	LA GRANGE, NE	SIMILAR TO 00500112-0552	MADE ON (CHECK) DATE
SUPPLY, OH	LANCASTER, PA	SUPERSEDES	OR L
CLINTON, OH, CAN.	NEW PHILADELPHIA, OH	SUPERSEDES	BY
CLERMONT, OH		NO. 00500112-0552	SCALE
EAST GILBERT, OH		REPLACES	CLASS
FRANKLIN, PA		REPLACES	1:2CM

REV. 12-00
 REVISIONS: FDC659, FDC8198, FDE0788, FBE3496, FDE4226

00500112-0552

EIERD006

BILL OF MATERIAL

DATE 03/16/94

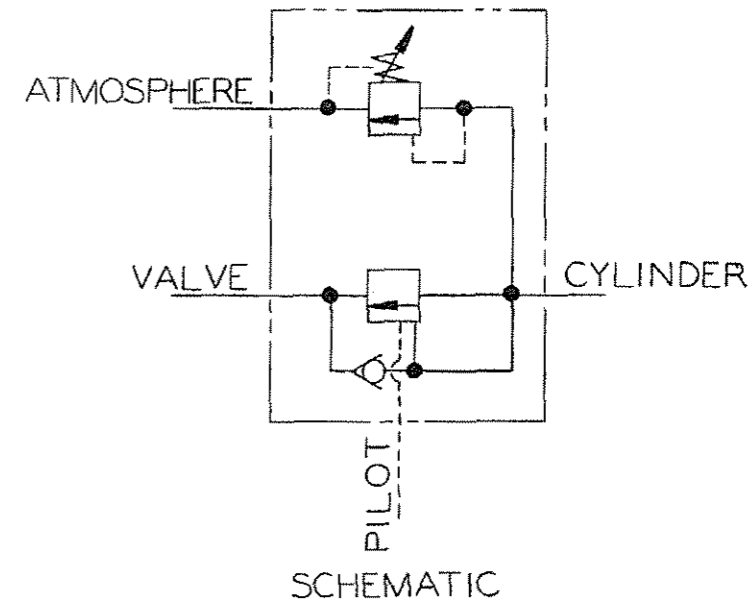
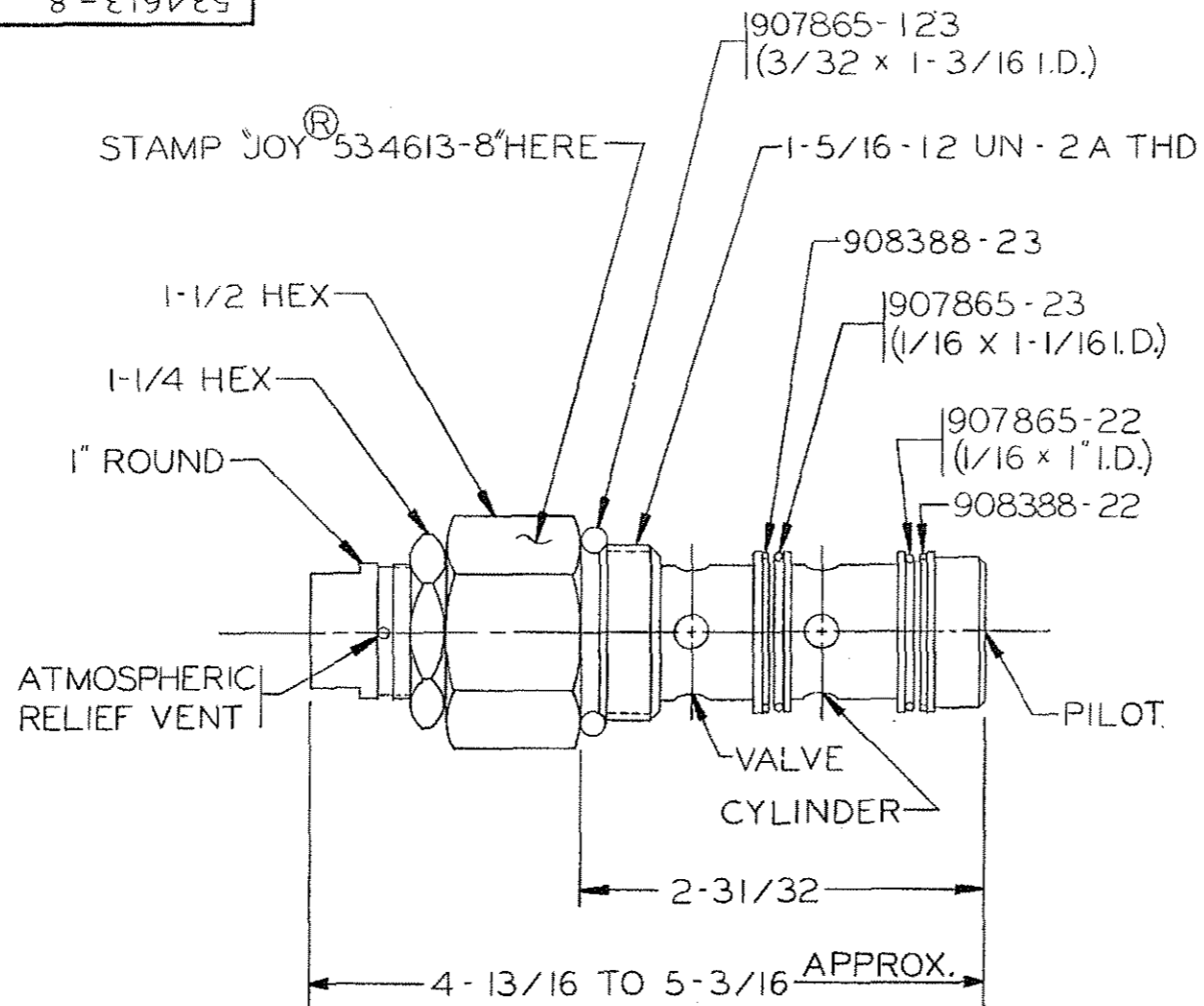
PAGE 1

B/M NUMBER	DESCRIPTION	INCHES	REFERENCE	DATE
00500112 0552	CYLINDER, ELEVATE, CONVEYOR		00500112 0552	01
	REPL 00500112 0530	REPL BY	FDC8198	04/23/92
	BILL OF MATERIAL FOR REPAIR	REFERENCE	FDE0788	03/22/93

QTY	PART NUMBER	DESCRIPTION	REF NO
1	00035943 0000	RING, WIPER	001
1	01701336 0000	RING, WIPER	002
1	01701123 0000	RING, WIPER	003
1	01701335 0000	RING, WIPER	004
1	01701345 0000	NUT, PACKING	005
1	01700735 0000	NUT	006
1	01700764 0000	NUT	007
1	01701346 0000	NUT, PACKING	008
1	01701122 0000	PACKING	010
1	01701397 0000	PACKING	011
1	01190186 0126	RING, STOP	012
1	01190186 0127	RING, STOP	013
1	01701205 0000	RING, STOP	014
1	01700684 0000	RING, BEARING	015
1	01701204 0000	RING, BEARING	016
1	01701203 0000	RING, BEARING	017
1	01701202 0000	RING, BEARING	018
1	01701342 0000	PISTON	019
4	01701347 0000	SCREW, SET	020
1	00900531 0031	SCREW, SET, 1/4-20 X 3/8	021
1	00534613 0008	VALVE, CHECK	022
2	00910618 0004	PLUG, 1/4 "O"	023
2	00910618 0008	PLUG, 1/2 "O"	024
1	01190149 0135	PLATE	025
3	00461083 0000	PLUG, NYLON	026
1	00900574 0003	BALL, 3/16	027
1	03565981 0013	ROD	028
1	03069546 0035	SLEEVE	029
1	03069546 0036	SLEEVE	030
1	03069546 0037	SLEEVE	031
1	00506205 1846	CYLINDER, MAIN	032

***** END OF BM PRINT *****

8-534613-8



NOTES:

RATED FLOW - 25 GPM
PILOT RATIO - 4.25 : 1

SET AT 2000 ± 100 PSI CRACKING PRESSURE
OR AT 2300 ± 50 PSI WITH 3 GPM FLOW.

LITHOPRINT, THIS DRAWING

This drawing and all information therein is the property of the JOY MANUFACTURING CO., is confidential and must not be made public or copied. It is loaned subject to return upon demand, is not to be used directly or indirectly in any way detrimental to our interest.

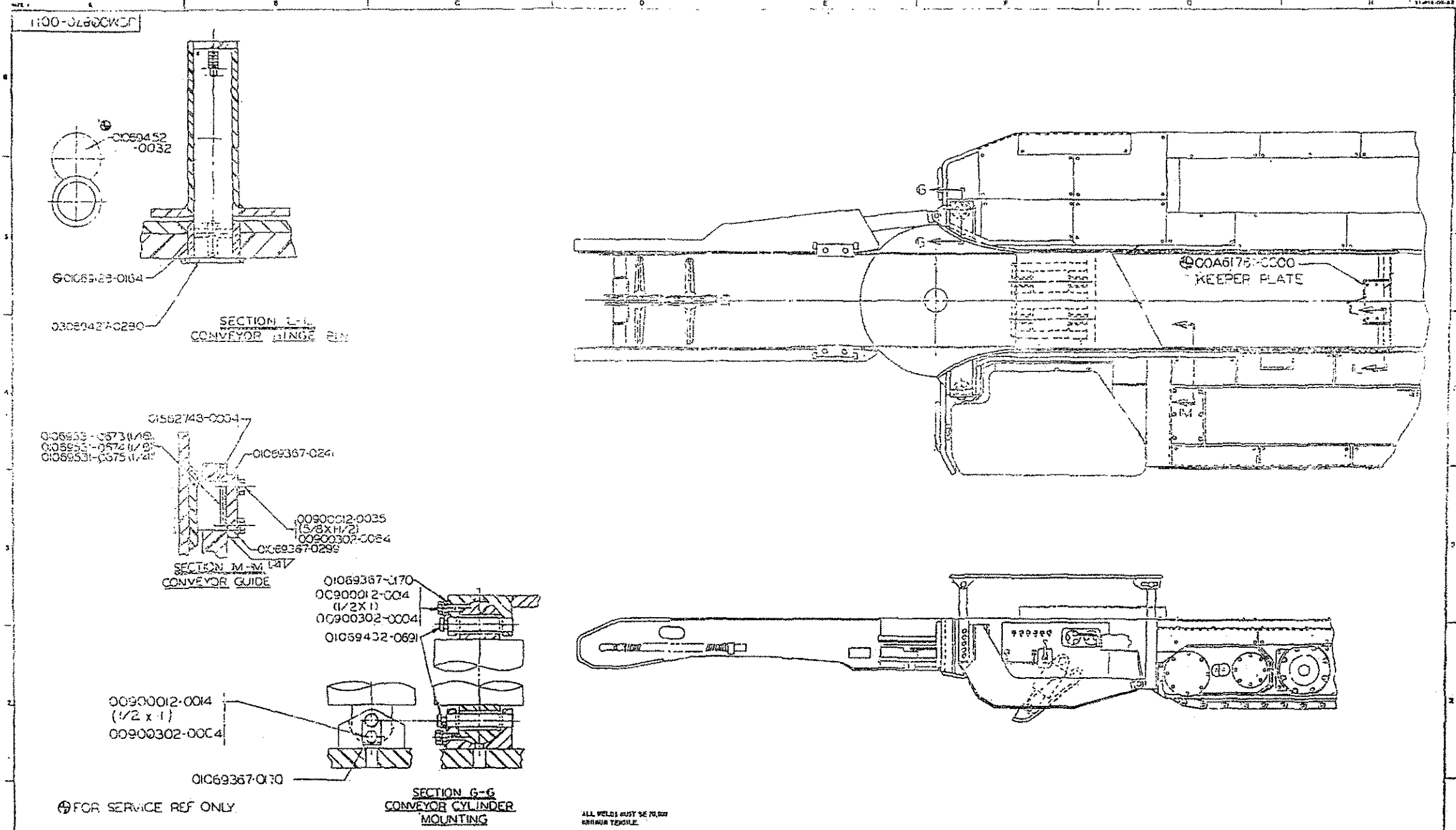
JOY MANUFACTURING CO.

PLANT LOCATION AS INDICATED BELOW	
BUFFALO, N. Y.	NEW PHILADELPHIA, O.
CLAREMONT, N. H.	
FRANKLIN, PA.	
GALT, ONTARIO, CANADA	
GREENOCK, SCOTLAND	
MICHIGAN CITY, IND.	

CHECK VALVE
(PILOT OPERATED - ATMOSPHERIC RELIEF)

SIMILAR TO 534613-7	NAME OR INITIAL & DATE	SCALE 1" = 1" CLASS 14CM 8
SUPERSEDES	DR. J. SMELL 3/28/84	
SUPERSEDED BY	TR.	
REPLACES	CK.	
REPLACED BY -0022	APPD.	

E. O. FCM 724	REVISIONS	FCN 957	©FDE4543
DATE			



BM00703481-0010

ENG ORDER FOC 3172		REVISIONS		MATERIAL		PATTERN NO.		LITHOPRINT		JOY TECHNOLOGIES INC. <small>FRANKLIN, PENNSYLVANIA 15035</small>		MOUNTING CONVEYOR ASSEMBLY FORWARD PIVOT	
<small>PLEASE REFER TO ALL DIMENSIONS UNLESS OTHERWISE NOTED. DIMENSIONS ARE LIMITED TO FUNCTIONAL & FORM. DIMENSIONS TO BE MAINTAINED TO 0.015. DO NOT SCALE THIS DRAWING.</small>		<small>HEAT TREAT</small> <small>HARDNESS</small> <small>CAMBRIDGE (100)</small>		<small>YES</small> <input type="checkbox"/> <small>NO</small> <input type="checkbox"/>		<small>YES</small> <input type="checkbox"/> <small>NO</small> <input type="checkbox"/>		<small>THIS DRAWING AND ALL INFORMATION HEREON IS THE PROPERTY OF JOY TECHNOLOGIES INC. IT MUST NOT BE MADE PUBLIC OR COPIED. IT IS TO BE USED ONLY FOR THE PURPOSES SPECIFIED HEREON. IT IS NOT TO BE USED DIRECTLY OR INDIRECTLY IN ANY MANNER DETRIMENTAL TO OUR INTEREST.</small>		<small>DATE</small> 12-10 <small>SCALE</small> 1/2"=1"		<small>DATE</small> 12-10 <small>SCALE</small> 1/2"=1"	
<small>UNLESS OTHERWISE NOTED ALL DIMENSIONS ARE LIMITED TO FUNCTIONAL & FORM. DIMENSIONS TO BE MAINTAINED TO 0.015. DO NOT SCALE THIS DRAWING.</small>		<small>HEAT TREAT</small> <small>HARDNESS</small> <small>CAMBRIDGE (100)</small>		<small>YES</small> <input type="checkbox"/> <small>NO</small> <input type="checkbox"/>		<small>YES</small> <input type="checkbox"/> <small>NO</small> <input type="checkbox"/>		<small>THIS DRAWING AND ALL INFORMATION HEREON IS THE PROPERTY OF JOY TECHNOLOGIES INC. IT MUST NOT BE MADE PUBLIC OR COPIED. IT IS TO BE USED ONLY FOR THE PURPOSES SPECIFIED HEREON. IT IS NOT TO BE USED DIRECTLY OR INDIRECTLY IN ANY MANNER DETRIMENTAL TO OUR INTEREST.</small>		<small>DATE</small> 12-10 <small>SCALE</small> 1/2"=1"		<small>DATE</small> 12-10 <small>SCALE</small> 1/2"=1"	

JCM00870-0011

B/M NUMBER DESCRIPTION

REFERENCE

DATE

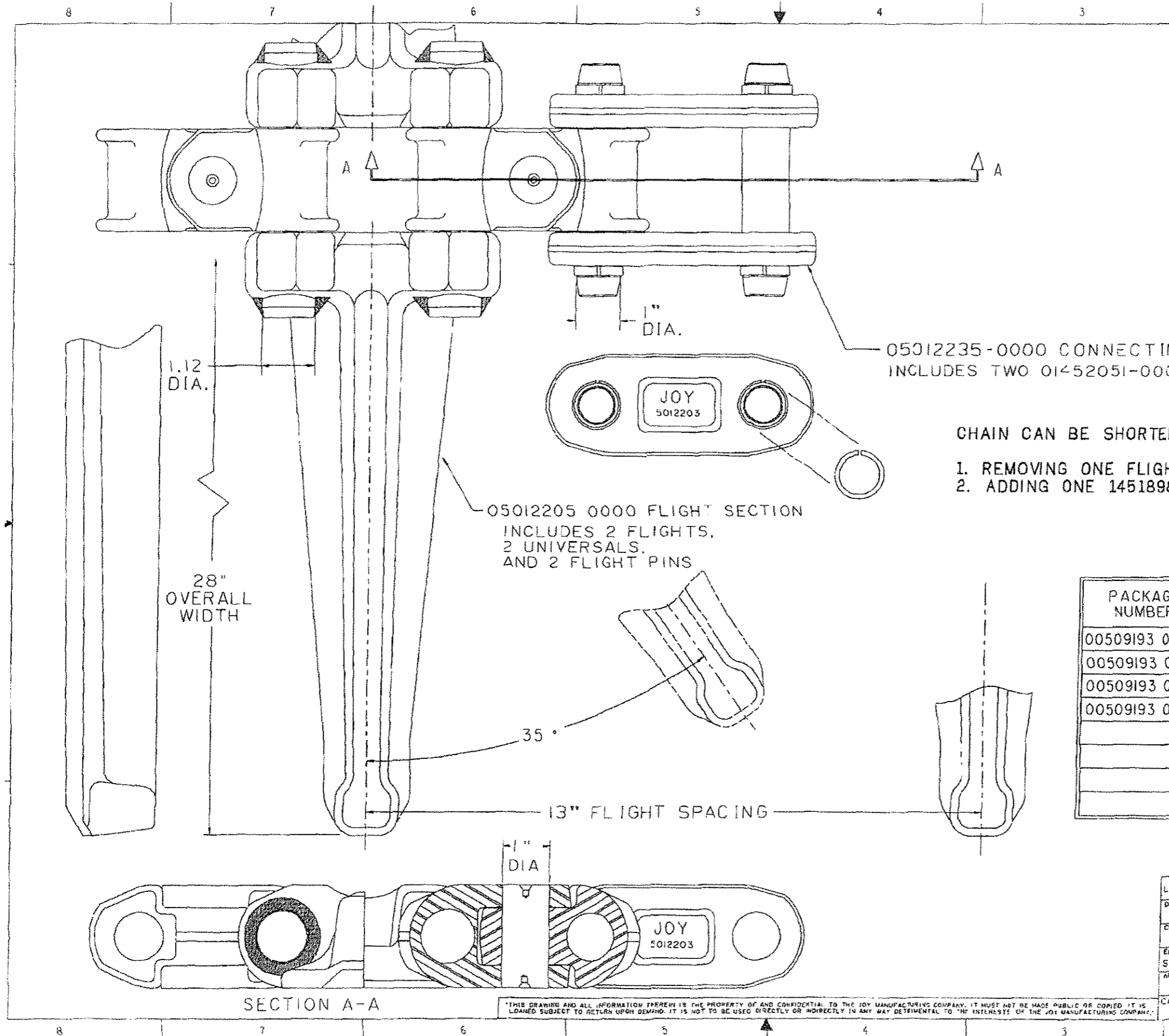
00703481 0010 MTG.CONV.ASSY.FWD.PIVOT 30 IN.

JCM00870 0011 01
FDC3172 04/02/90

QTY	PART NUMBER	DESCRIPTION	REF NO
4	00900012 0014	SCREW, CAP, GR. 5, 1/2-13 X 1	
8	00900012 0035	SCREW, CAP, GR. 5, 5/8-11 X 1-1/2	
4	00900302 0004	WASHER, LOCK, 1/2	
8	00900302 0064	WASHER, LOCK, 5/8	
4	01069367 0170	KEEPER	
2	01069367 0241	KEEPER	
2	01069367 0299	KEEPER	
4	01069432 0691	PIN, PLAIN	
4	01069531 0673	SHIM, ROUND	
4	01069531 0674	SHIM, ROUND	
2	01069531 0675	SHIM, ROUND	
2	01562748 0004	PLATE, BEARING	
2	03069427 0280	PIN	

***** END OF BM PRINT *****

00509193 0000		REVISIONS		DATE	APPROVED
ZONE	REV				
	A	FCQ0208			
	B	FCQ0249		9 MAR 89	
	C	FCQ0595			



NOTE:
 ONE FLIGHT SECTION IS
 INVERTED IN EACH CHAIN
 PACKAGE FOR RETURN
 DECK CLEANING PURPOSES.

05012235-0000 CONNECTING LINK
 INCLUDES TWO 01452051-0001 RETAINING RINGS

- CHAIN CAN BE SHORTENED 6.5 INCHES MINIMUM BY :
1. REMOVING ONE FLIGHT SECTION (3 PITCHES).
 2. ADDING ONE 1451898-0000 ROLLER LINK (1 PITCH).

PACKAGE NUMBER	NUMBER OF FLIGHT SECTIONS	LENGTH
00509193 0048	12	13'
00509193 0052	13	14' 1"
00509193 0056	14	15' 2"
00509193 0060	15	16' 3"

LITHOPRINT	YES	NO	MATERIAL	
	Y		CARBURIZE	HARDNESS
DRAFTER:	DATE		CLASS	SIMILAR TO
CHECKER:	DATE		JOY MANUFACTURING COMPANY FRANKLIN, PENNA. 18323	
ENGINEER:	DATE		3 1/4 PITCH UNIVERSAL CONVEYOR CHAIN - PACKAGE 8 ASSEMBLY INSTRUCTIONS	
S. MOORE	4/29/89		28" WIDE 13" FL. SPACING	
APPROVAL:	DATE		SIZE	FSCM NO
			D	75003
			DWG NO	00509193 0000
CAD / CAM DRAWING MANUAL REVISIONS NOT AUTHORIZED			SCALE	FULL WGT.
			SHEET	1

THIS DRAWING AND ALL INFORMATION HEREIN IS THE PROPERTY OF AND CONFIDENTIAL TO THE JOY MANUFACTURING COMPANY. IT MUST NOT BE MADE PUBLIC OR COPIED. IT IS LOANED SUBJECT TO RETURN UPON DEMAND. IT IS NOT TO BE USED DIRECTLY OR INDIRECTLY IN ANY WAY DETRIMENTAL TO THE INTERESTS OF THE JOY MANUFACTURING COMPANY.

B/M Number	Description	Reference	Date	Sheet
00509193-0056	CHAIN, CONVEYOR (3-1/4 P)	00509193-0000 FCQ0725	07/22/1998	01

Qty	UOM	Part Number	Description	Ref No
13	EA	01451897-0000	PLATE, SIDE	10
1	EA	01451897-0001	PLATE, SIDE	20
28	EA	01452039-0000	FLIGHT	30
28	EA	01452051-0001	RING, RETAINING (BLUE)	40
28	EA	01452116-0013	PIN, CHAIN	50
28	EA	03452119-0001	LINK, SWIVEL	60
14	EA	05012234-0000	LINK, CONNECTOR	70

***** End of Bill of Material *****