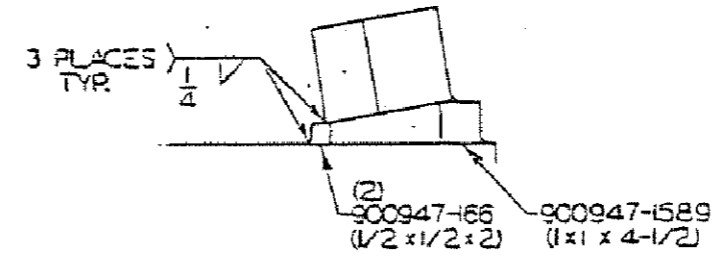


- LOCATE SPRAY BLOCK IN THIS POSITION WHEN MOUNTING ON A 12' MACHINE.
- ▲ MOUNT SPRAY THAT ϕ OF CENTER SPRAY IS PARALLEL WITH TOP EDGE OF MOTOR COVER AND MOUNT KEY 00900947-0166 AS SHOWN AND MOVE KEY 00900947-1587 TO AIM ϕ OF SPRAY AT END-RING.



ALL WELDS 70,000 P.S.I. T.S.

TYP BOTH SIDES OF MACHINE

12CM MACHINES.

<small>This drawing and all dimensions shown in the assembly are the property of JOY MANUFACTURING CO. and shall not be used for the reproduction of any part or assembly without the written consent of JOY MANUFACTURING CO. All dimensions are in inches unless otherwise specified.</small>	JOY MANUFACTURING CO. PLANT LOCATION AS INDICATED BELOW		SPRAYS, WATER HEAD, CUTTER (END RINGS)		
	BIRMINGHAM, AL BUFFALO, NY CAMBRIDGE, INT. CAN. CHICAGO, ILL. EAST CHICAGO, ILL. FRENCH CREEK, PA.	LOS ANGELES, CALIF. MINNEAPOLIS, MINN. NEW PALM BEACH, FLA. PHOENIX, ARIZ. RICHMOND, VA.	SIMILAR TO: SUPERSEDED BY: REPLACES: REPLACED BY:	GRADE OR SPECIAL & HARD: TR: CR: APPR:	SCALE: DATE:
	DATE: 7-21-51		SK025455-0009		
	REVISIONS:		APPROVED BY:		

EIERD006

BILL OF MATERIAL

DATE 06/16/93

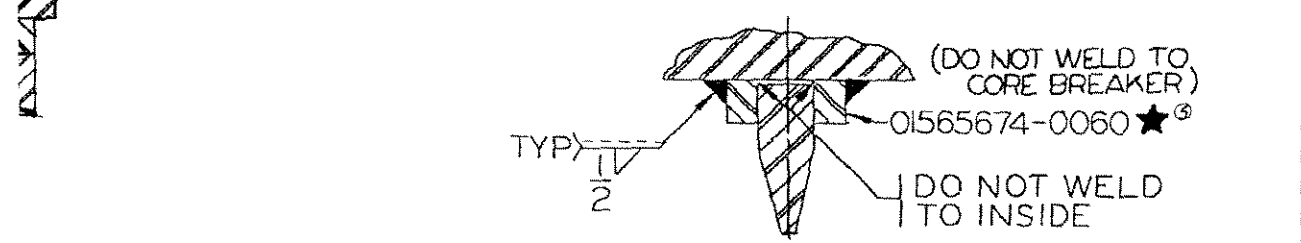
PAGE 1

***** GLOBAL COMPONENT *****

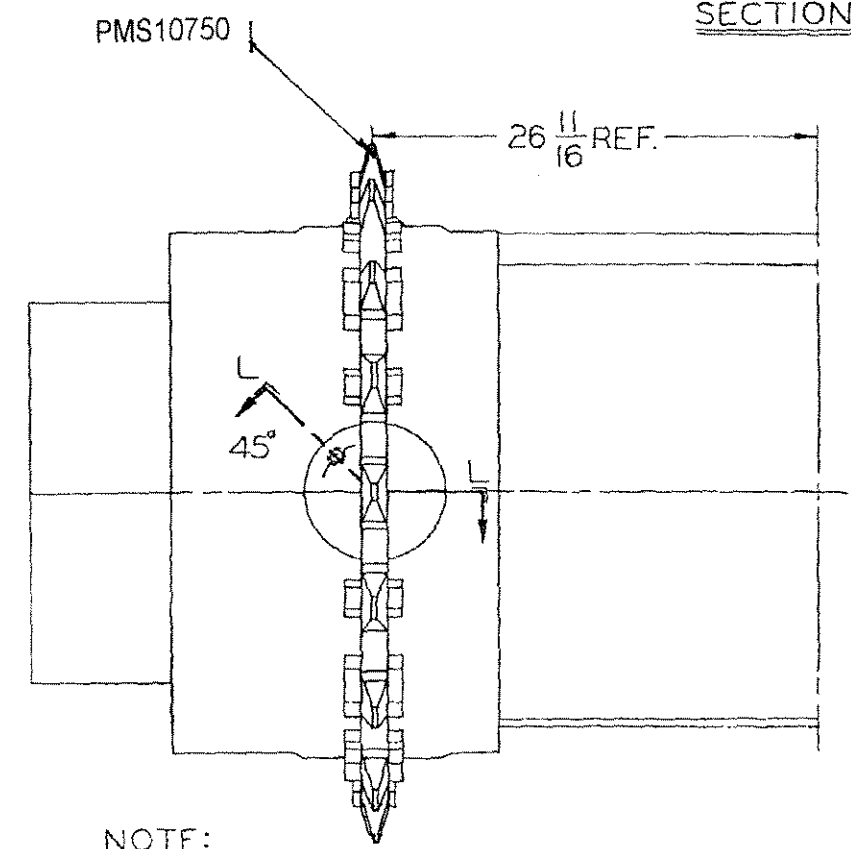
B/M NUMBER	DESCRIPTION	INCHES	REFERENCE	DATE
00720290 0002	SPRAYS, HEAD, CUTTER		SK025455 0009 FDE1451	01 06/01/93

QTY	PART NUMBER	DESCRIPTION	REF NO
2	00570996 0073	GUARD	
2	00900716 0026	ADAPTER, 3/8 NPTF X 1/4 MPT	
4	00900947 0166	KEY, 1/2 X 1/2 X 2	
2	00900947 1589	KEY, 1 X 1 X 4-1/2	
2	00901052 0001	ELBOW, STREET, 90 X 1/4 NPTF X 1/4 NPTF	
2	01046348 0277	BLOCK, SPRAY	

***** END OF BM PRINT *****



SECTION K-K



- NOTE:
- ③ ● WELDING IS TO BE DONE AFTER MACHINING.
 - ③ ★ LOCATE AND WELD BRACKETS AND SHEAR BLOCKS IN PLACE USING CORE BREAKER AS JIG BEFORE STRESS RELIEVING AND MACHINING.
 - ▲ WELD MUST BE OIL TIGHT. WELD -80,000 MIN. T.S. UNSPECIFIED WELDS -70,000 MIN. T.S.
 - ③ ● CORE BREAKER AND PART # 01069600-0345 TO BE REMOVED BEFORE STRESS RELIEF TAKES PLACE AND REMOUNTED AFTER STRESS RELIEF

FINISH SYMBOLS						DR. J. ROGUS		PLANT LOCATION FRANKLIN, PA	
MICRO INCHES	MICRO INCHES	DESCRIPTION	MICRO INCHES	MICRO INCHES	DESCRIPTION	DATE	CHK'D	TITLE:	SCALE:
4	N5	0.1	F	125	N8	3.2	COMMON MACHINE	6-6-95	
8	N4	0.2	G	250	N9	6.3	ROUGH MACHINE		
16	N3	0.4	H	500	N10	12.5	HEAVY ROUGH		
32	N6	0.8	K	1000	N11	25	EX HEAVY ROUGH		
63	N7	1.6							

DATE	6-6-95	REPLACES	
APP		REPLACED BY	
DATE			
SIMILAR TO			
CLASS:	14CM		
DWG. NO.	00534461-2005		

THIS DRAWING AND ALL INFORMATION THEREON IS THE PROPERTY OF AND CONFIDENTIAL TO JOY TECHNOLOGIES INC. IT MUST NOT BE MADE, REPRODUCED, COPIED, OR DISCLOSED TO ANY OTHER PARTY WITHOUT THE WRITTEN CONSENT OF JOY TECHNOLOGIES INC.

B/M NUMBER	DESCRIPTION	INCHES	REFERENCE	DATE
00534854	0055 CASE, GEAR, CUTTER		SK024611 0000	01
			00534461 2005	02
			00534854 0055	01
			FDE8051	09/12/95
			FDE9453	01/17/96
			FDE9531	02/14/96

QTY	G/P	PART NUMBER	DESCRIPTION	REF NO	QTY	G/P	PART NUMBER	DESCRIPTION	REF NO	QTY	G/P	PART NUMBER	DESCRIPTION	REF NO
6		00043118	0005 SHIM		2		00910660	0237 O-RING		8		01069531	0406 SHIM, ROUND	
4		00043118	0007 SHIM		2		00910660	0248 O-RING		12		01069531	0408 SHIM, ROUND	
4		00043118	0020 SHIM		2		00910660	0258 O-RING		8		01069531	0409 SHIM, ROUND	
2		00507521	0027 COVER		2		00910660	0259 O-RING		4		01069531	0410 SHIM, ROUND	
1		00534461	2005 CASE, HEAD, DRUM		2		00910660	0263 O-RING		2		01069531	0526 SHIM, ROUND	
6		00809023	0000 WIRE, 16 GA. (.0625)		2		00910660	0266 O-RING		2		01069531	0527 SHIM, ROUND	
12		00900012	0045 SCREW, CAP, GR. 5, 5/8-11 X 1-3/4		2		00910660	0386 O-RING		6		01069531	0529 SHIM, ROUND	
12		00900050	0025 SCREW, CAP, GR. 5, 5/8-11 X 1-1/4		2		00913131	0013 SEAL, DUO-CONE, FLOATING		8		01069531	0530 SHIM, ROUND	
12		00900302	0064 WASHER, LOCK, 5/8		2		00913131	0018 SEAL, DUO-CONE, FLOATING		6		01069531	0531 SHIM, ROUND	
2		00900906	0399 BEARING, ROLLER, SPHERICAL		2		00925311	0160 RING, LOCK, ASSEMBLED, METRIC, 160 X 210		6		01069531	0604 SHIM, ROUND	
4		00900906	0448 BEARING, ASSEMBLED, TAPERED		2		00950023	0002 BEARING, CONE, TAPERED		4		01069531	0605 SHIM, ROUND	
8		00900970	0166 KEY, 1/2 X 1/2 X 2		2		00950110	0002 BEARING, CONE, TAPERED		4		01069531	0606 SHIM, ROUND	
4		00901205	0110 PLUG, SQ. HD., MAG., 1 NPTF		2		00950201	0001 BEARING, CONE, TAPERED		2		01069566	0306 SPACER, SPECIAL	
2		00901246	0053 SEAL, LIP		2		00950238	0001 BEARING, CONE, TAPERED		2		01069625	0382 TUBE	
2		00901246	0404 SEAL, LIP		4		00950243	0001 BEARING, CONE, TAPERED		2		01069632	0015 WASHER, PLATE	
2		00901246	0413 SEAL, LIP		2		00950244	0001 BEARING, CONE, TAPERED		2		01069701	0077 GEAR, SPUR, 4DP	
2		00901246	0574 SEAL, LIP		2		00950302	0001 BEARING, CONE, TAPERED, METRIC		2		01069701	0078 GEAR, SPUR, 4DP	
2		00901924	0004 PLUG, HEX SOC., 3/8 NPTF		2		00960023	0001 BEARING, CUP, TAPERED		2		01069702	0094 GEAR, SPUR, 5DP	
2		00901924	0007 PLUG, HEX SOC., 1 NPTF		2		00960110	0001 BEARING, CUP, TAPERED		2		01069702	0095 GEAR, SPUR, 5DP	
4		00901924	0008 PLUG, HEX SOC., 1-1/4 NPTF		2		00960201	0001 BEARING, CUP, TAPERED		8		01069702	0096 GEAR, SPUR, 5DP	
2		00902109	0300 RING, RETAINING		2		00960238	0001 BEARING, CUP, TAPERED		2		01069762	0047 GEAR, BEVEL, STR., 3DP	
2		00902109	0362 RING, RETAINING		4		00960243	0001 BEARING, CUP, TAPERED		2		01565671	0007 CARRIER, SEAL	
24		00902224	0038 SCREW, CAP, 3/8-16 X 5/8		2		00960244	0001 BEARING, CUP, TAPERED		2		01565717	0005 GASKET	
16		00902224	0071 SCREW, CAP, 3/8-16 X 1		2		00960302	0001 BEARING, CUP, TAPERED, METRIC		2		01565905	0004 CAGE, PLANETARY	
52		00902224	0073 SCREW, CAP, 1/2-13 X 1		2		01069140	0314 CAP, BOLTED		2		01565909	0030 RING, DRIVE	
28		00902224	0095 SCREW, CAP, 1/2-13 X 1-1/2		2		01069140	0323 CAP, BOLTED		2		03069140	2012 CAP, BOLTED	
12		00902224	0106 SCREW, CAP, 1/2-13 X 1-3/4		2		01069140	0403 CAP, BOLTED		2		03069762	0038 GEAR	
16		00902224	0822 SCREW, CAP, 5/8-11 X 1-3/4		2		01069141	0028 CAP, PLUG						
36		00902224	0854 SCREW, CAP, 3/4-10 X 1-3/4		2		01069145	0377 CARRIER, BEARING						
36		00902224	0872 SCREW, CAP, 3/4-10 X 6-1/2		2		01069145	0378 CARRIER, BEARING						
12		00902224	0929 SCREW, CAP, 1-8 X 2-1/4		2		01069145	0387 CARRIER, BEARING						
6		00902301	1004 O-RING		2		01069145	0420 CARRIER, BEARING						
2		00903103	0001 FITTING, RELIEF		2		01069145	0456 CARRIER, BEARING						
16		00903452	1309 BEARING, ROLLER, CYLINDRICAL		2		01069145	0485 CARRIER, BEARING						
4		00904584	0085 PIN, DOWEL, 3/4 X 2-1/2		2		01069145	0515 CARRIER, BEARING						
2		00905361	0312 RING, RETAINING		2		01069146	0009 CARRIER, SEAL						
2		00905361	0334 RING, RETAINING		2		01069146	0010 CARRIER, SEAL						
8		00905361	0393 RING, RETAINING		2		01069146	0060 CARRIER, SEAL						
24		00905987	0003 SPRING, DIE		2		01069367	0131 KEEPER						
12		00907009	0008 WIRE, LOCKING, 11/16		2		01069450	0007 PLUG, STRAIGHT						
16		00907009	0009 WIRE, LOCKING, 7/8		2		01069515	0174 SEAL, SPECIAL						
72		00907009	0014 WIRE, LOCKING, 1-1/16		8		01069527	0089 SHAFT, SHOULDERED						
12		00907009	0018 WIRE, LOCKING, 1-1/2		1		01069528	0301 SHAFT, SPLINED						
2		00910659	0243 O-RING		2		01069528	2124 SHAFT, SPLINED						
2		00910659	0339 O-RING		6		01069531	0223 SHIM, ROUND						
2		00910659	0361 O-RING		6		01069531	0224 SHIM, ROUND						
2		00910660	0233 O-RING		8		01069531	0225 SHIM, ROUND						
2		00910660	0234 O-RING		24		01069531	0401 SHIM, ROUND						
					16		01069531	0402 SHIM, ROUND						
					8		01069531	0403 SHIM, ROUND						
					6		01069531	0404 SHIM, ROUND						
					6		01069531	0405 SHIM, ROUND						

***** END OF BM PRINT *****

***** GLOBAL COMPONENT *****

B/M NUMBER	DESCRIPTION	INCHES	REFERENCE	DATE
00720290 0001	SPRAYS, HEAD, CUTTER		SK025455 0008 FDE1451	01 06/01/93

QTY	PART NUMBER	DESCRIPTION	REF NO
1	00570920 0003	GUARD	
1	00570920 0004	GUARD	
4	00900054 0399	BOLT, GR. 8, 1-1/4-7 X 3-1/4	
4	00900302 0010	WASHER, LOCK, 1-1/4	
5	00900947 0490	KEY, 3/4 X 3/4 X 4	
10	00901924 0003	PLUG, HEX SOC., 1/4 NPTF	
4	01046348 0276	BLOCK, SPRAY	
1	01046348 0278	BLOCK, SPRAY	

***** END OF BM PRINT *****

B/M Number	Description	Reference	Date	Sheet
00703444-0170	DRIVE PARTS, CUTTER	JCM00709-0088 FDF4105	06/24/1997	01

Qty	UOM	Part Number	Description	Ref No
2	EA	00480224-0000	WASHER	10
4	EA	00900054-0371	BOLT, GR. 8, 1-1/4-7 X 2-1/2	20
4	EA	00900160-0011	NUT, HEX, GR. 2, 1-1/4-7	30
24	EA	00900947-0036	KEY, 1/2 X 1/2 X 1-3/16	40
2	EA	00902095-0250	RING, RETAINING	50
2	EA	00902109-0275	RING, RETAINING, INTERNAL, AXIAL	60
8	EA	00902224-0084	SCREW, CAP, 1/2-13 X 1-1/4	70
2	EA	00910659-0145	O-RING	80
2	EA	00910659-0357	O-RING	90
2	EA	00912370-0102	SPRING, BELLEVILLE	100
24	EA	00925441-3030	BOLT, HEX HD, CL 10.9, M30, 80, BLACK OXIDE	110
8	EA	01069367-2001	KEEPER	120
2	EA	01069398-0016	NUT, ROUND	130
2	EA	01069452-0082	PLUG, SPECIAL	140
2	EA	01069528-2174	SHAFT, SPLINED	150
2	EA	01565673-2374	PLATE (Cutter Head)	160
4	EA	03069610-0166	STUD	170

***** End of Bill of Material *****

JCM00709-0088

01069367-2001

CUTTER HEAD GEAR CASE

BEND DOWN OVER MOTOR FLANGE

BEND UP OVER BOLT HEAD

03069294-0079 REF.

00571071-0167 REF.

00900054-0371
(1/4 X 2 1/2)

03069610-0166
00900160-0011

SECTION A-A

00925441-3030
(M30 X 80)
00900947-0036
(1/2 X 1/2 X 1-3/16)

01069196-0066 REF.

00571071-0206 REF.

CUTTER HEAD GEAR CASE
CUTTER FRAME

00912370-0102

01069398-0016

00480224-0000

CUTTER MOTOR

00902224-0084
(1/2 X 1-1/4)

00910659-0357
3/16 X 5-1/2

00902109-0275

01069452-0082

00910659-0145
(3/32 X 2-9/16 I.D.)

00902095-0250

CLUTCH
SEE SALES ORDER

01069528-2174

01565673-2374

SECTION B-B

CUTTER FRAME - SEE SALES ORDER

00703444-0170 B.M.

00571071-0168 REF.

01069196-0066 REF.

00571071-0207 REF.

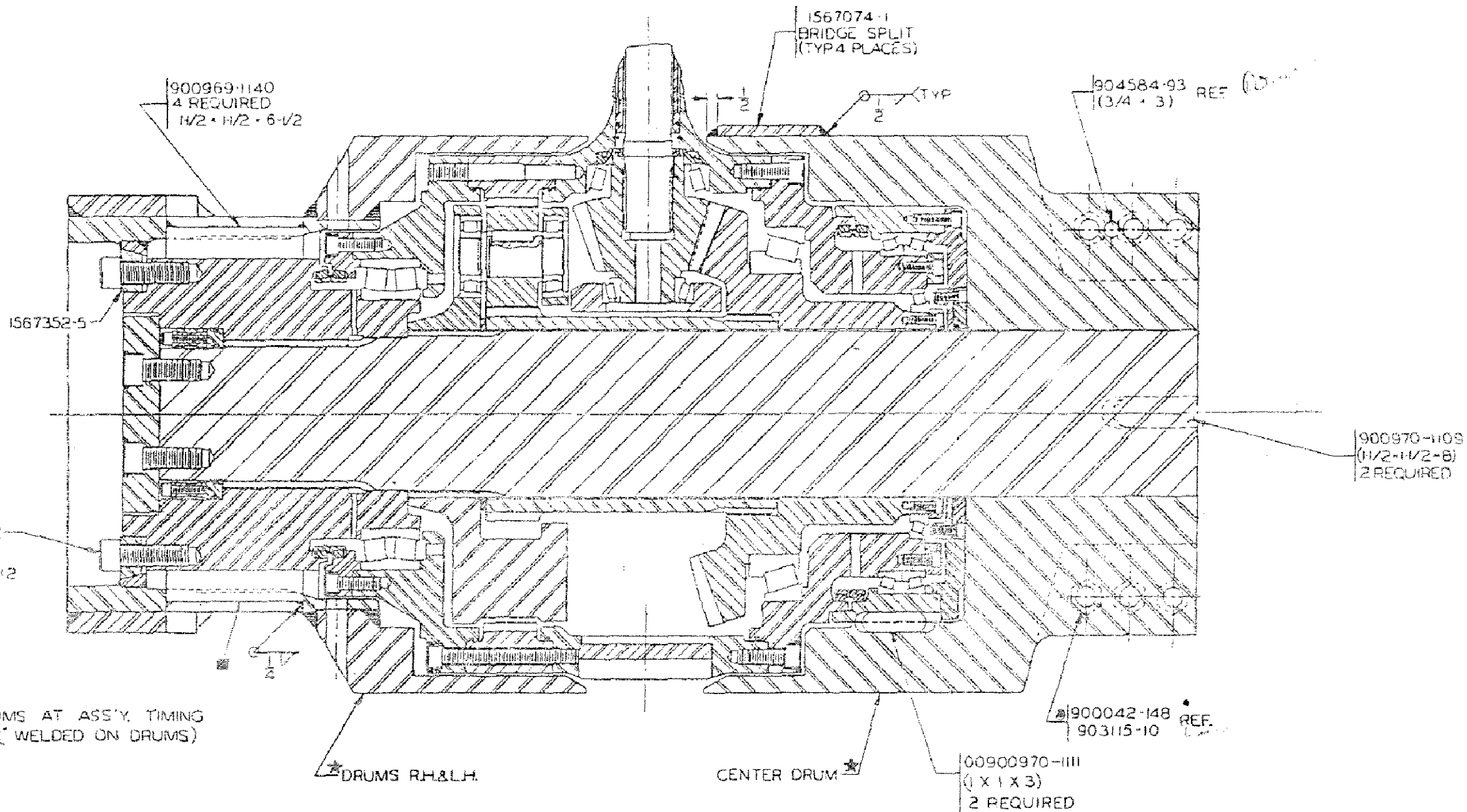
☐ TORQUE TO 1200 FT-LBS DRY OR 720 FT-LBS LUBED

★ PACK END OF HOLLOW MOTOR SHAFT WITH GREASE TO LUBE PINION AND SHAFT SPLINES BEFORE INSTALLING 01069528-2174 SHAFT. INSTALL SHAFT WITH GROOVE TOWARD RETAINER PLATE.

■ MOTOR SEAL MAY BE PURCHASED COMPLETE AS 00703500-9357

▲ TORQUE TO 475-525 FT-LBS DRY

ENG ORDER		REVISIONS		FINISH SYMBOLS		JOY TECHNOLOGIES INC.		DRIVE, CUTTER	
QTY	DESCRIPTION	NO	DATE	NO	DESCRIPTION	FRANKLIN, PENNSYLVANIA 16823			
1	00703444-0170 B.M.			A	PRECISION POLISH	F	125	COMMON MACHINE	THIS DRAWING AND ALL INFORMATION THEREIN IS THE PROPERTY OF AND CONFIDENTIAL TO JOY TECHNOLOGIES INC. IT MUST NOT BE MADE PUBLIC OR COPIED. IT IS LOANED SUBJECT TO RETURN UPON DEMAND. IT IS NOT TO BE USED DIRECTLY OR INDIRECTLY IN ANY WAY DETRIMENTAL TO OUR INTEREST.
				B	FINE POLISH	G	250	ROUGH MACHINE	
				C	COMMON POLISH	H	500	HEAVY ROUGH	
				D	BRIND OR EQUAL	K	1000	EX HEAVY ROUGH	
				E	SMOOTH MACHINE				
MATERIAL		PATTERN NO		LITHOPRINT		DR		MIRE GARBACZ	
HEAT TREAT				YES <input checked="" type="checkbox"/> NO <input type="checkbox"/>		DATE		08/24/97	
HARDNESS						CLASS		12CM	
CARBURIZE (ECD)						SCALE		12CM	
						SIMILAR TO			
						REPLACES			
						REPLACED BY			
								JCM00709-0088	



⊗ INSERT KEY UNTIL IT BOTTOMS IN HUB

★ REFER TO SALES ORDER.

⊙ TORQUE TO 400 FT. LBS DRY/240 LUBED.

⊕ TORQUE TO 905 FT. LBS DRY 545 LUBED.

ALL WELDS TO BE 80,000 PSI MIN. T.S.

B.M. 703440-214

⊗ PLUG FULLER HOLES TO PROTECT THREADS.

This drawing and all information shown is the property of the JOY MANUFACTURING CO. and is not to be used, copied, or reproduced in any way without the written consent of the company.

JOY MANUFACTURING CO.		DRUM MOUNTING PARTS	
PLANT LOCATION AS INDICATED BELOW			
DESIGNED BY	DATE	APPROVED BY	SCALE
CHECKED BY	DATE	DATE	CLASS
EAST PITTSBURGH, PA.		FRANKLIN, PA.	

REVISION TO J.C. 2/19/58

REPLACED BY

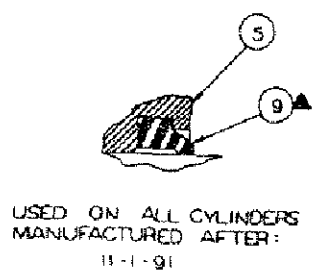
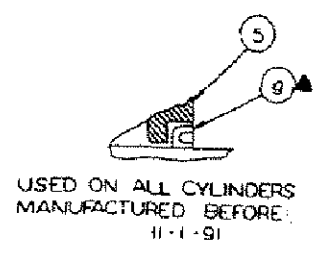
JCM710-61

B/M NUMBER	DESCRIPTION	INCHES	REFERENCE	DATE
00703440 0214	MOUNTING, DRUM, CUTTER		JCM00710 0061	01
	(41" X 9'-5" WIDE) (INTEGRAL END CLUSTER)		FCL0908	01/50/70
	(LOCK SEGMENT DRUM ATTACHMENT) (12CM7)		FCX0200	01/51/70
			FDC8376	05/08/92
			FDE7798	07/25/95

QTY	G/P	PART NUMBER	DESCRIPTION	REF NO
12		00900502 0112	SCREW, SET, 5/8-11 X 3/4	
4		00900969 1140	KEY, 1-1/2 X 1-1/2 X 6-1/2	
2		00900970 1109	KEY, 1-1/2 X 1-1/2 X 8	
2		00900970 1111	KEY, 1 X 1 X 3	
36		00902224 0932	SCREW, CAP, 1-8 X 3	
4		01567074 0001	BAR	
12		01567352 0005	SEGMENT, LOCKING	

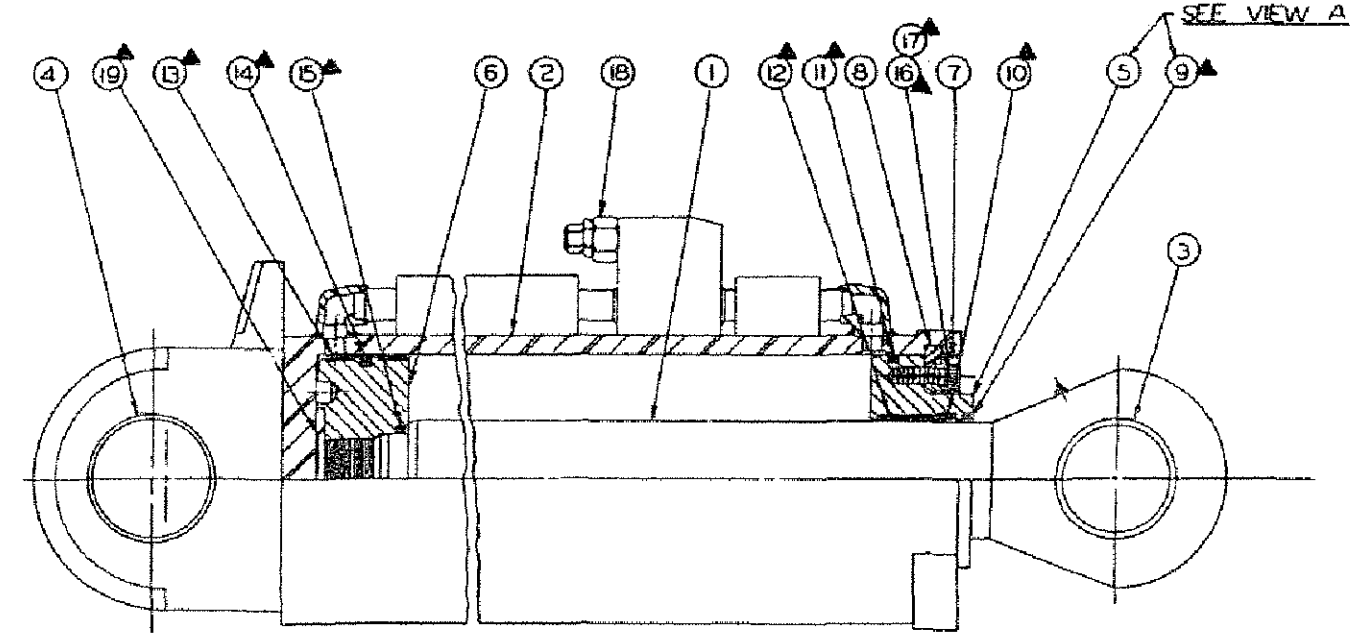
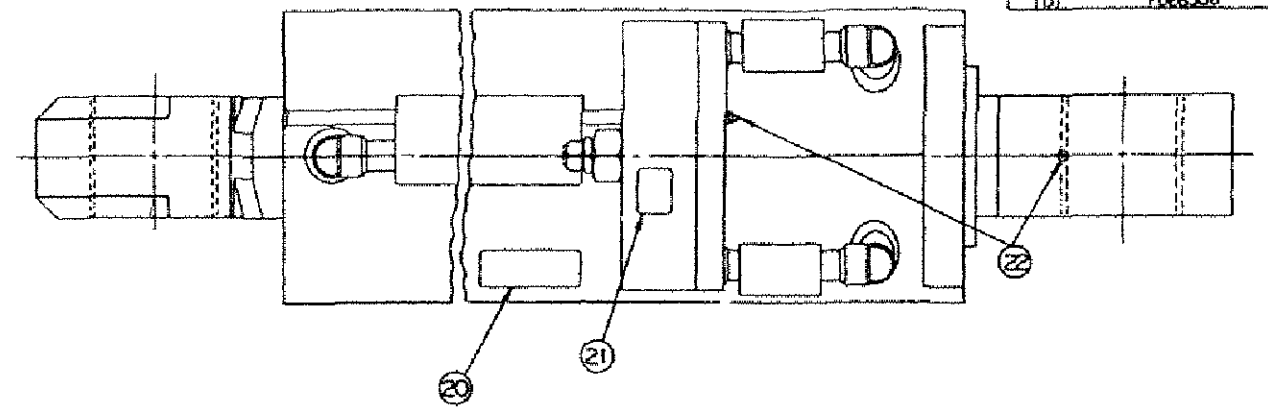
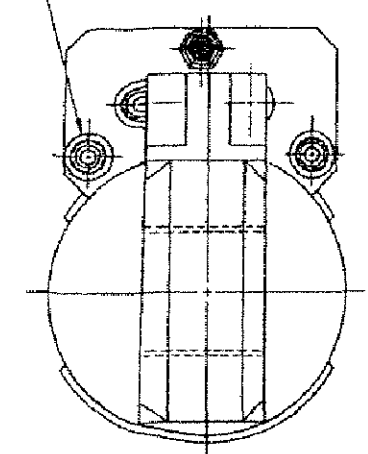
***** END OF BM PRINT *****

REV	DESCRIPTION	DATE	APPROVED
A	FDG-0338	2-23-91	JM
B	FDG-4338	12-23-91	
C	FDG-7138	12-23-91	
D	FDG-6-308	1-95	



VIEW A

3/4 O-RING PORT (4 PLACES)



SEE VIEW A

NOTES:
ALL SEALS IN THIS CYLINDER ARE
COMPATIBLE WITH WATER-OIL
EMULSION FIRE-RESISTANT FLUID
ALL PARTS MARKED ▲ MAY BE
PURCHASED AS KIT 03190218-0070
PAINT JOY ORANGE PER JOY SPEC 00820031-0000

SCREW PISTON DOWN TIGHT ON PLUNGER THEN
PLACE KEY IN SLOT FLUSH WITH PLUNGER END
AND WELD KEY TO PISTON (1/8 WELD-V2 LONG EACH END)

JOY MANUFACTURING CO.
CERTIFIED CYLINDERS

THIS CYLINDER HAS BEEN INSPECTED AND APPROVED BY THE QUALITY CONTROL DEPARTMENT OF JOY TECHNOLOGIES INC. FOR CONFORMANCE WITH THE REQUIREMENTS OF THE JOY REPLACEMENT PARTS LIST.

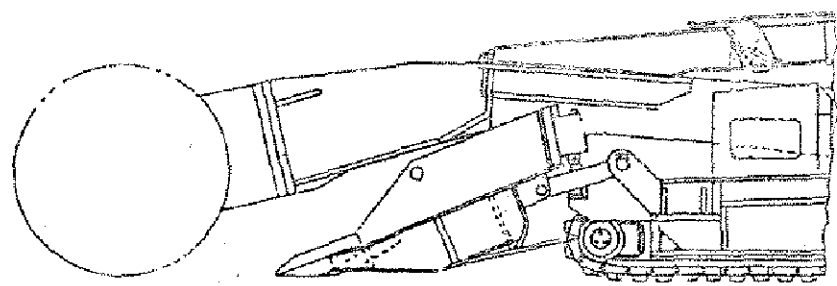
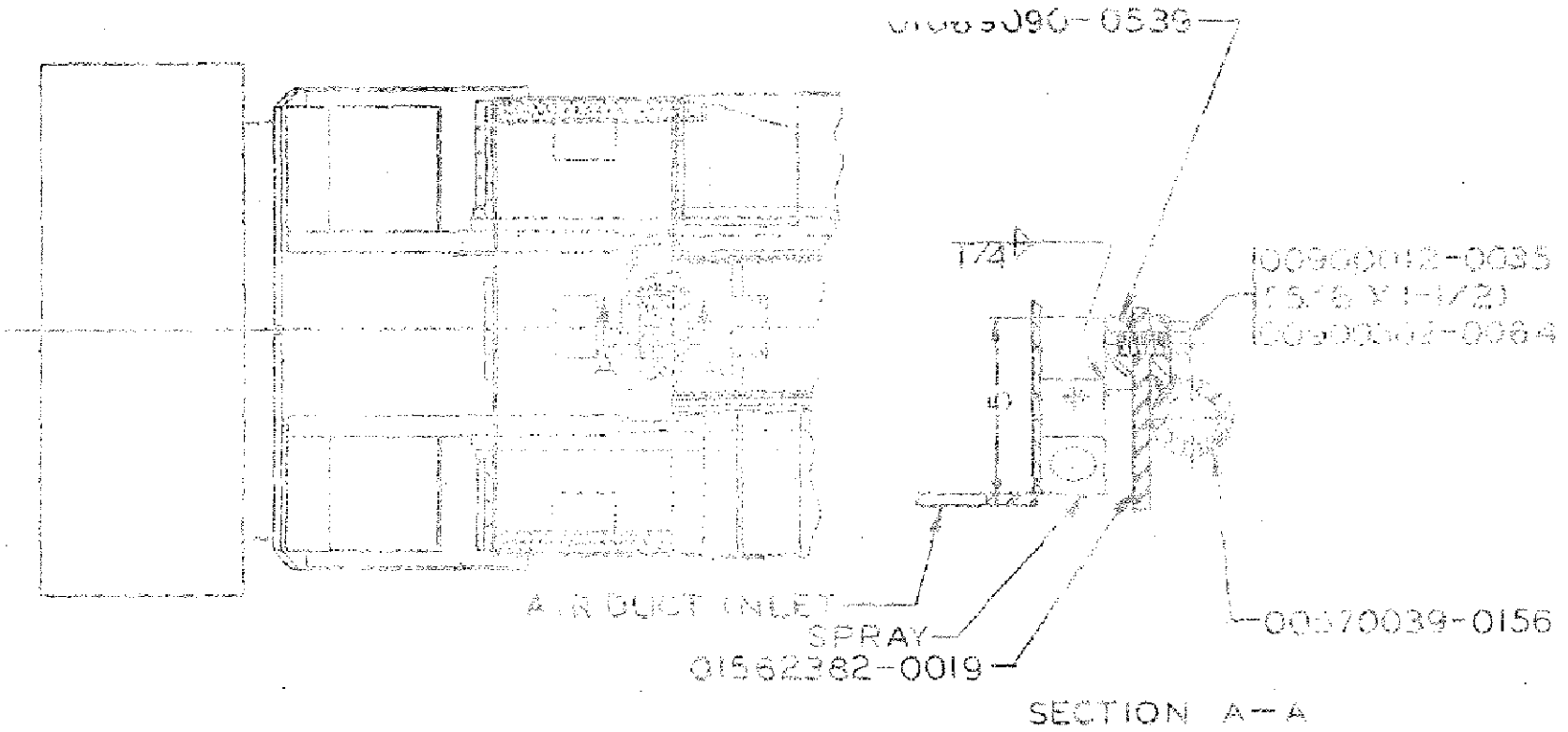
DATE	11-1-91	REV	1
DESIGNED BY	L. LARDIN	DATE	2-23-91
CHECKED BY		DATE	
APPROVED BY		DATE	
LITHOPRINT		CLASS	PCW
JOY TECHNOLOGIES INC.		00500140-0538 D	
CYLINDER (HYDRAULIC)		(SHEAR)	
SCALE	1:1	REV	1

ALL DIMENSIONS UNLESS OTHERWISE SPECIFIED ARE IN INCHES AND DECIMALS THEREOF. DIMENSIONS IN PARENTHESES ARE FOR INFORMATION ONLY. DIMENSIONS IN PARENTHESES ARE FOR INFORMATION ONLY. DIMENSIONS IN PARENTHESES ARE FOR INFORMATION ONLY.

B/M NUMBER	DESCRIPTION	REFERENCE	DATE
00500140 0538	CYLINDER	00500140 0538	01
	BILL OF MATERIAL FOR REPAIR REFERENCE	FDC7128	11/18/91
	(ITEM NO.'S 9 THRU 17 AND ITEM NO. 19	FDC8198	04/23/92
	MAY BE PURCHASED AS SEAL KIT NO.	FDE6308	02/09/95
	03190218 0070)		

QTY	G/P	PART NUMBER	DESCRIPTION	REF NO
1		01565981 0023	ROD	001
1		03069862 0021	BODY, CYLINDER	002
1		01069127 0578	BUSHING	003
1		01069127 0569	BUSHING	004
1		01069308 0006	HEAD, PACKING	005
			- (01190122 0195 SUPPLIED BEFORE 11/1/91)	
1		01190139 0210	PISTON	006
1		01190178 0081	RETAINER, HEAD	007
1		01190186 0114	RING, RETAINING	008
1		00908889 4000	RING, WIPER	009
			- (00908876 4000 SUPPLIED BEFORE 11/1/91)	
1		00917960 0253	SEAL, POLY PAK, DEEP TYPE	010
1		03190218 0072	SEAL, HEAD	011
1		03189832 0049	BEARING, ROD	012
2		03190455 0061	RING, WEAR	013
1		00917895 0853	SEAL, PISTON	014
1		00907865 0338	O-RING	015
6		00901858 0071	SCREW, CAP, 1/2 X 1-1/2	016
6		00900306 0004	WASHER, LOCK, 1/2	017
1		00534613 0023	VALVE, CHECK	018
1		00900947 1714	KEY, 1/4 X 1/2 X 4	019
1		01190149 0135	PLATE	020
1		01069448 0856	PLATE, NAME	021

***** END OF BM PRINT *****



NOTE: WHEN NO SPRAY WELD BOSS TO DUCT WORK.

ALL WELDS MUST BE 70,000 MINIMUM TENSILE.

LITHOPRINT, THIS DRAWING

SBM00703500-9378

ALL WELDS MUST BE 70,000 MINIMUM TENSILE.

This drawing and all information therein is the property of the JOY MANUFACTURING CO. It is confidential and must not be made public or copied. It is loaned subject to return upon demand, is not to be used directly or indirectly in any way detrimental to our interest.

JOY MANUFACTURING CO.	
PLANT LOCATION AS INDICATED BELOW	
BIRMINGHAM, AL	LAGRANGE, NC
BUFFALO, NY	MICHIGAN CITY, IN
CAMBRIDGE, ONT. CANADA	NEW PHILADELPHIA, OH
CLAREMONT, MN	
E. HARRISBURG, SCOTLAND	
ELKHART, IN	

PARTS TO ADD ALTERNATE DUST COLLECTOR DISCHARGE

SIMILAR TO	NAME OR INITIAL & DATE	SCALE	CLASS
SUPERSEDES	DR. <u>WALSH</u>		<u>12EM12</u>
SUPERSEDED BY	YR. <u>5/8/88</u>		
REPLACES	CK		
REPLACED BY	APPD.		

EIERD008

BILL OF MATERIAL

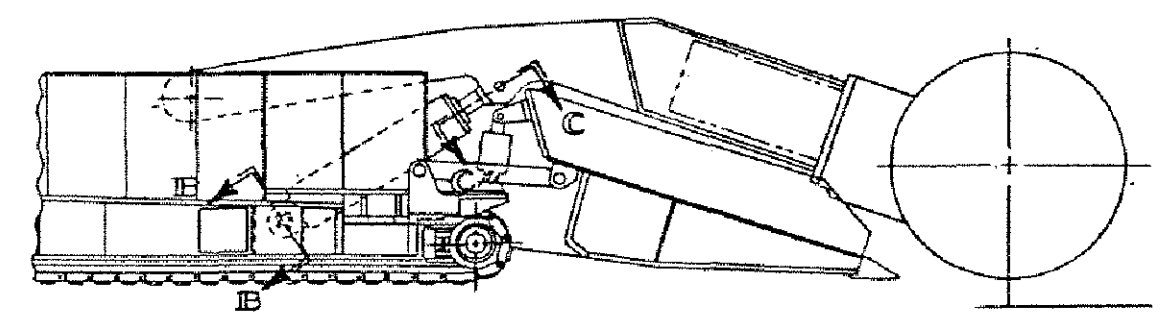
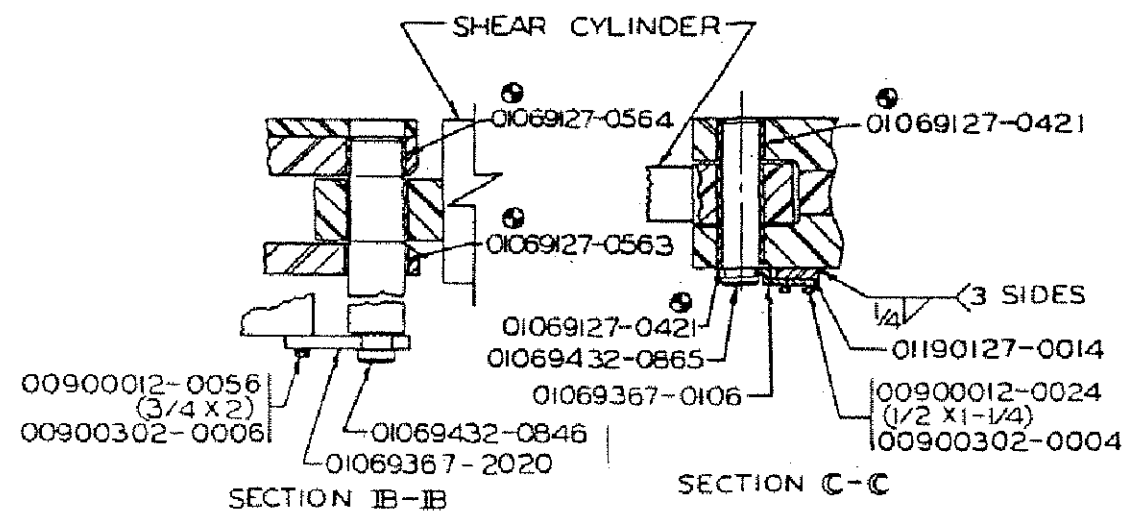
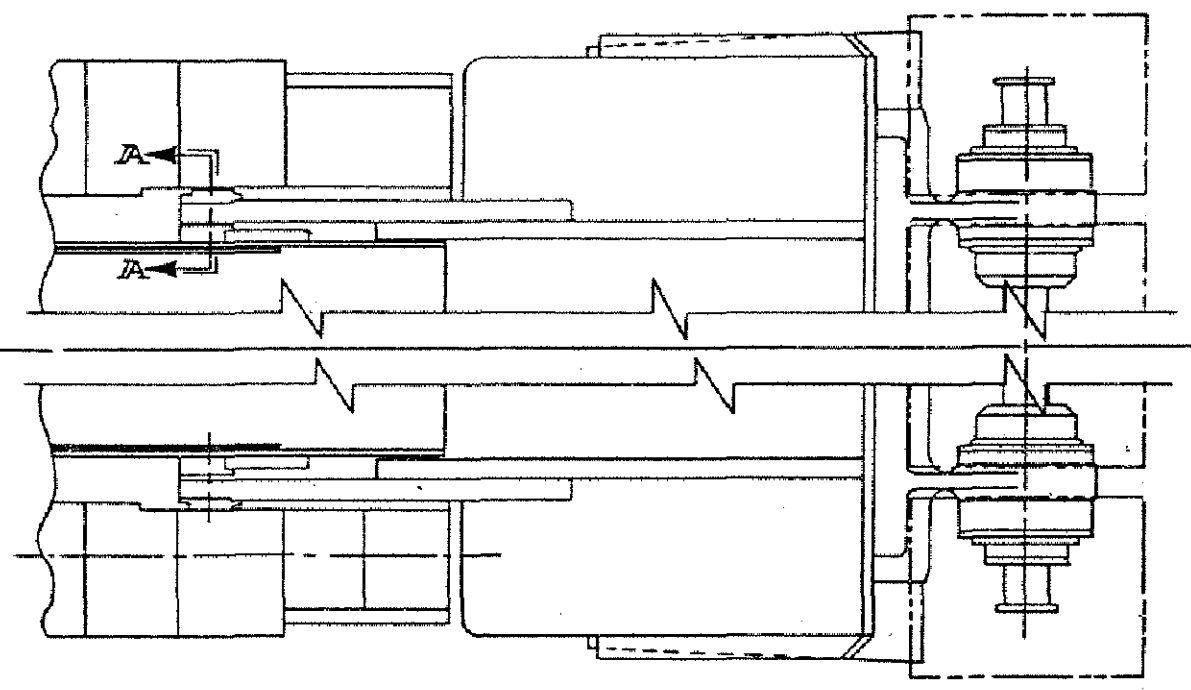
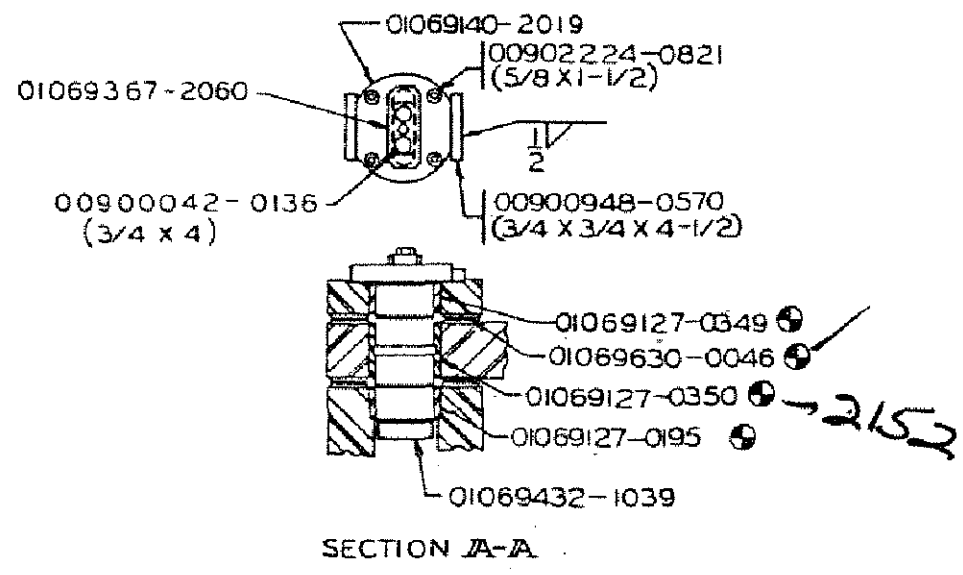
DATE 05/22/89

PAGE 1

B/M NUMBER	DESCRIPTION	REFERENCE	DATE
00703500 9378	PARTS TO ADD ALT. DUST COLL DISCHARGE	SK024773 0310 FDA0126	01 05/09/88

QTY	PART NUMBER	DESCRIPTION	N/S	PRINT
1	00570039	0156 TUBING (ASS'Y)		
6	00900012	0035 CAP SCR (5/8 X 1-1/2 HEX HD)		
6	00900302	0064 LWASHER (5/8)		
6	01049090	0539 BOSS (MTD)		
1	01572392	0019 BELTING		

*****END OF BILL OF MATERIAL PRINT*****



⊕ FOR SERVICE REFERENCE ONLY

ALL YELDS MUST BE 70,000
MINIMUM TENSILE.

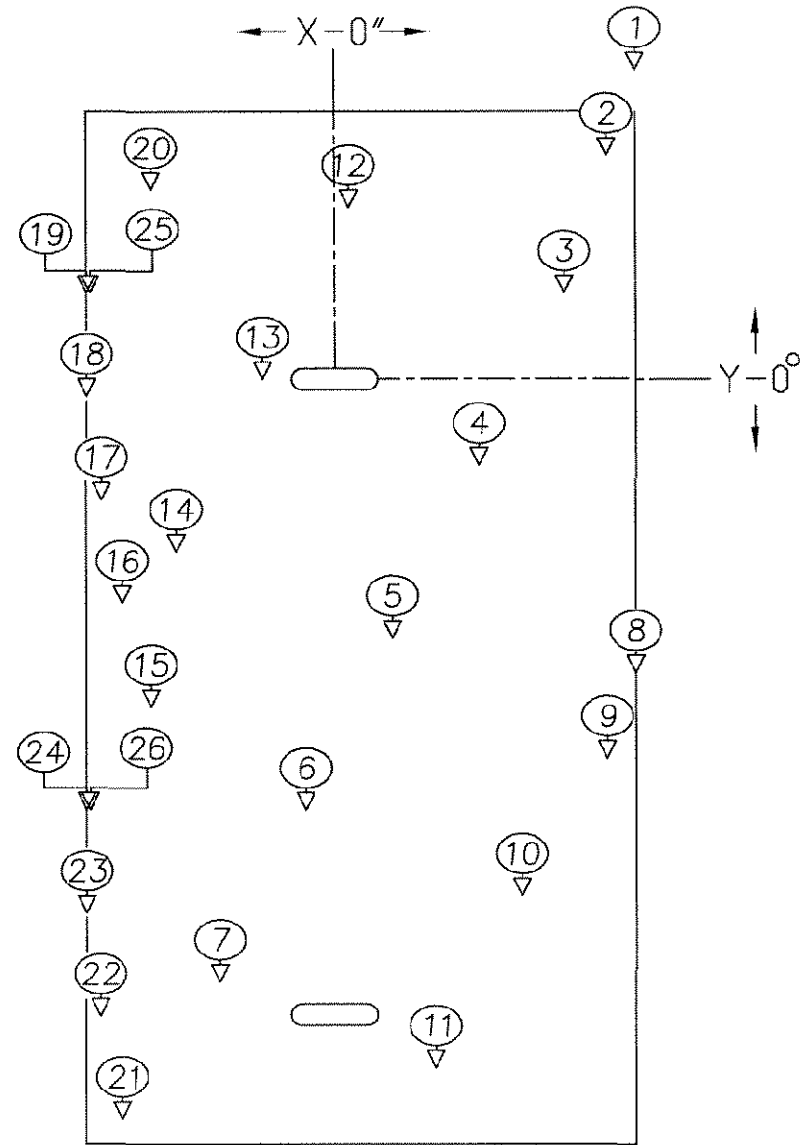
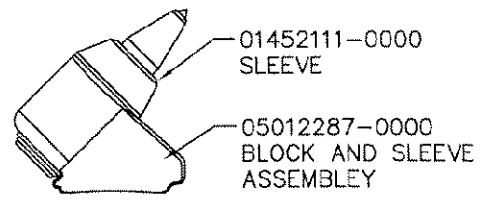
BM 00703482-0025

ENG ORDER FOC 5506		REVISIONS		FDC7373 OF DE0970		FINISH SYMBOLS		JOY TECHNOLOGIES INC. FRANKLIN, PENNSYLVANIA 15222		MOUNTING CUTTER HEAD	
UNLESS OTHERWISE NOTED ALL DIMENSIONS SHOWN IN FIGURES SHOWING DIMENSIONS UNLESS LIMITED TO FRACTIONAL 1/16 INCH ANGULAR & 1/4" SPACIAL DIMENSIONS UNLESS LIMITED TO 0.125 DO NOT SCALE THIS DRAWING				MATERIAL		PATTERN NO		LITHO PRINT YES <input checked="" type="checkbox"/> NO <input type="checkbox"/>		THIS DRAWING AND ALL INFORMATION THEREIN IS THE PROPERTY OF AND CONFIDENTIAL TO JOY TECHNOLOGIES INC. IT MUST NOT BE MADE PUBLIC OR COPIED, REPRODUCED, OR TRANSMITTED IN ANY MANNER WITHOUT THE WRITTEN PERMISSION OF JOY TECHNOLOGIES INC.	
HEAT TREAT				HARDNESS		FINISH SYMBOLS		SIMILAR TO 0002		ON FILE	
DATE				CLASS		SCALE		REPLACES BY		JCM00871-0024	

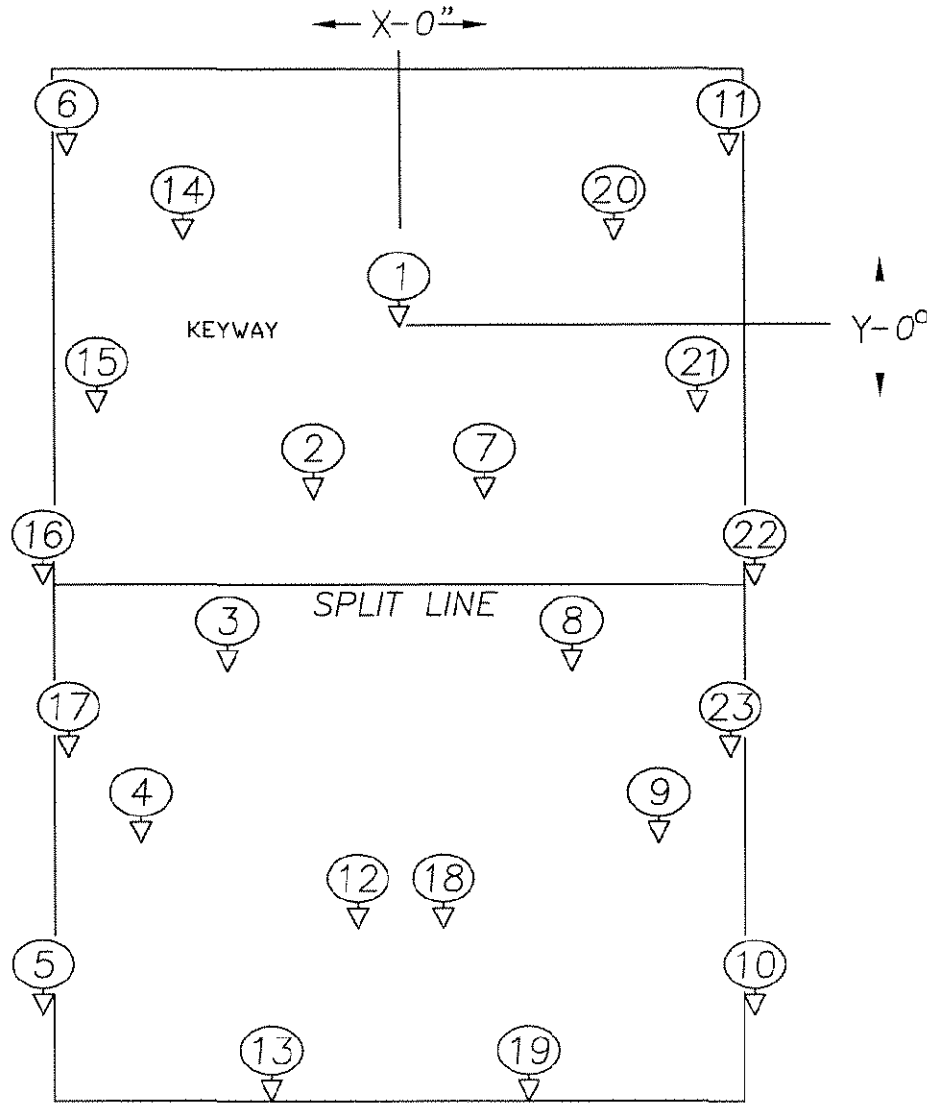
B/M NUMBER	DESCRIPTION	REFERENCE	DATE
00703482 0025	MOUNTING, CUTTER HEAD	JGM00871 0024	01
		FDC5906	04/30/91
		FDC7373	11/05/91

QTY	PART NUMBER	DESCRIPTION	REF NO
4	00900012 0024	SCREW, CAP, GR. 5, 1/2-13 X 1-1/4	
4	00900012 0054	SCREW, CAP, GR. 5, 1/2-13 X 2	
4	00900012 0056	SCREW, CAP, GR. 5, 3/4-10 X 2	
4	00900042 0136	CAP SCREW(3/4 X 4 HEX HD)	
8	00900302 0004	WASHER, LOCK, 1/2	
4	00900302 0006	WASHER, LOCK, 3/4	
4	00900948 0570	KEY, 3/4 X 3/4 X 4-1/2	
8	00902224 0821	SCREW, CAP, 5/8-11 X 1-1/2	
2	01069140 2019	CAP, BOLTED	
2	01069367 0106	KEEPER	
2	01069367 2020	KEEPER	
2	01069367 2060	KEEPER	
2	01069432 0846	PIN, PLAIN	
2	01069432 0865	PIN, PLAIN	
2	01069432 1039	PIN, PLAIN	
2	01190127 0014	PAD, BOSS	

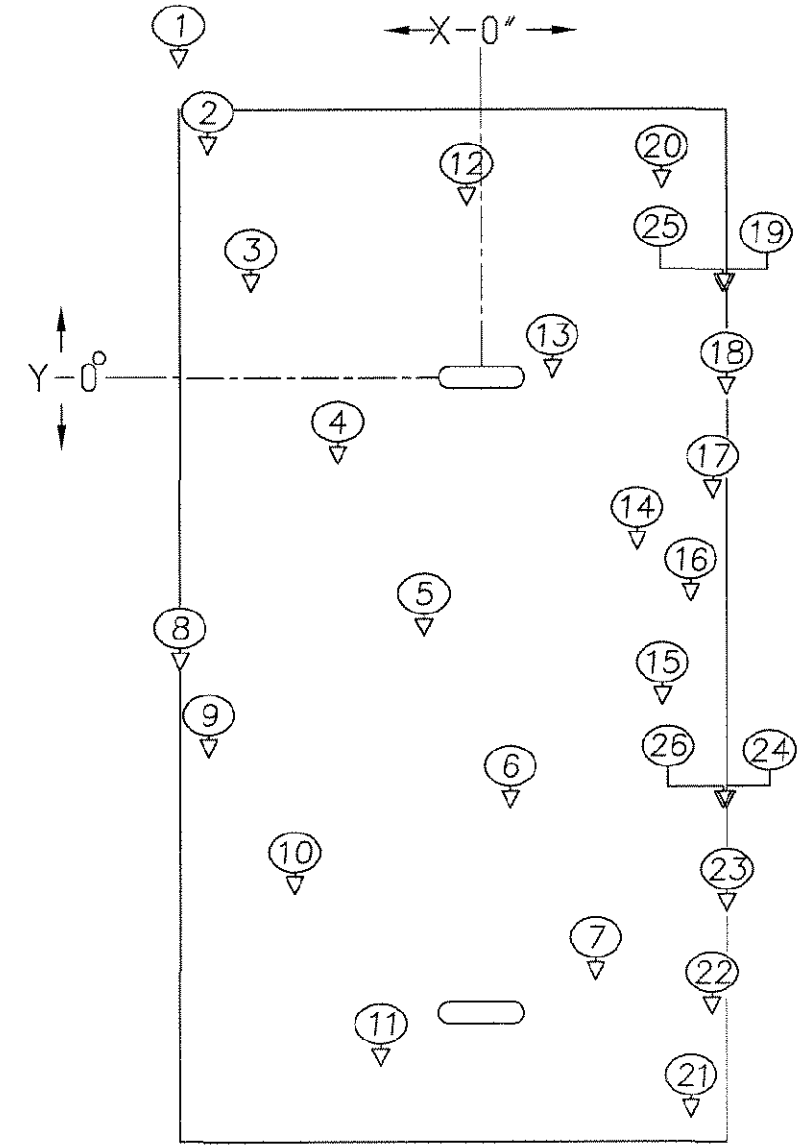
***** END OF BM PRINT *****



RIGHT



CENTER



LEFT

<p>PHILLIPS 367 GEORGE STREET BECKLEY, WV 25801 PHONE 304-256-0537</p>	3" B.D.S. 44" C.D. 10' 10" CUTTING WIDTH		
	MATERIAL: N/A	PART NO: N/A	
	DATE: 10/18/05	FILE: -40-3-10-10	
	DWG. BY: CJK	DIRECTORY: 201000	
	REVISION: 1	SCALE: NTS	SIZE B: 1